

Product datasheet

Anti-GPR2/CCR10 antibody ab3904

★★★★★ 5 Abreviews 7 References 4 Images

Overview

Product name	Anti-GPR2/CCR10 antibody
Description	Goat polyclonal to GPR2/CCR10
Host species	Goat
Specificity	Peptide sequence is < 50 % identical to other human chemokine receptors in this region.
Tested applications	Suitable for: WB, ICC/IF, ELISA, ICC, Flow Cyt, IHC-P
Species reactivity	Reacts with: Mouse, Human
Immunogen	Synthetic peptide: VSWGHYSGDEEDAYSAPLPELC , corresponding to amino acids 9-31 of Human CCR10.

 [Run BLAST with](#)

 [Run BLAST with](#)

General notes

Receptors for the C-C chemokine family include CCR-1, CCR-2A, CCR-3, CCR-4, CCR-5 and the Duffy blood group antigen. The C-C receptors are important in the function of T cell chemotaxis and migration of phagocytic cells to sites of inflammation. CCR10 in particular is the receptor for the skin-associated CC chemokine CCL27 (CTACK) as well as the novel chemokine CCL28 which displays chemotactic activity for resting CD4+ and CD8+ T cells.

Properties

Form	Liquid
Storage instructions	Shipped at 4°C. Upon delivery aliquot and store at -20°C or -80°C. Avoid repeated freeze / thaw cycles.
Storage buffer	pH: 7.20 Constituents: 0.21% Potassium phosphate, 0.812% Sodium chloride
Purity	Immunogen affinity purified
Primary antibody notes	Receptors for the C-C chemokine family include CCR-1, CCR-2A, CCR-3, CCR-4, CCR-5 and the Duffy blood group antigen. The C-C receptors are important in the function of T cell chemotaxis and migration of phagocytic cells to sites of inflammation. CCR10 in particular is the receptor for the skin-associated CC chemokine CCL27 (CTACK) as well as the novel chemokine CCL28 which displays chemotactic activity for resting CD4+ and CD8+ T cells.
Clonality	Polyclonal

Isotype

IgG

Applications

Our [Abpromise guarantee](#) covers the use of **ab3904** in the following tested applications.

The application notes include recommended starting dilutions; optimal dilutions/concentrations should be determined by the end user.

Application	Abreviews	Notes
WB	★★★★☆	1/250. Can be blocked with GPR2/CCR10 peptide (ab182115) .
ICC/IF	★★★★☆	Use at an assay dependent concentration.
ELISA	★★★★☆	1/75000.
ICC		1/1000.
Flow Cyt	★★★★☆	1/25. See Eksteen et al; Von Lutichau et al; Notohamprodjo et al; Hirata et al and Hislop et al.

[ab37373](#) - Goat polyclonal IgG, is suitable for use as an isotype control with this antibody.

IHC-P	★★★★☆	1/500. Perform heat mediated antigen retrieval before commencing with IHC staining protocol. Perform heat mediated antigen retrieval at pH 6.0 or pH 8.0; steam for 20 min followed by cooling for 20 min.
-------	-------	--

Target

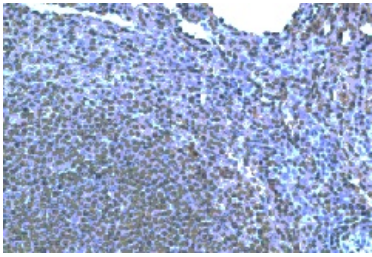
Function Receptor for chemokines SCYA27 and SCYA28. Subsequently transduces a signal by increasing the intracellular calcium ions level and stimulates chemotaxis in a pre-B cell line.

Tissue specificity Expressed at high levels in adult testis, small intestine, fetal lung, fetal kidney. Weaker expression was observed in many other adult tissues including spleen, thymus, lymph node, Peyer patches, colon, heart, ovary, peripheral blood lymphocytes, thyroid and spinal cord. Also expressed by melanocytes, dermal fibroblasts, dermal microvascular endothelial cells. Also detected in T-cells and in skin-derived Langerhans cells.

Sequence similarities Belongs to the G-protein coupled receptor 1 family.

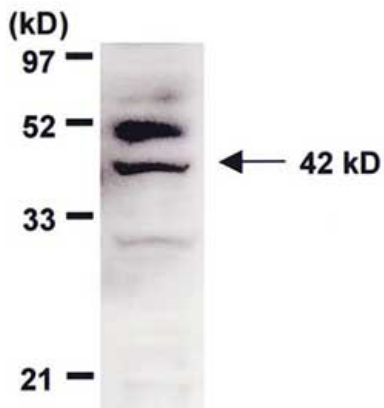
Cellular localization Cell membrane.

Images



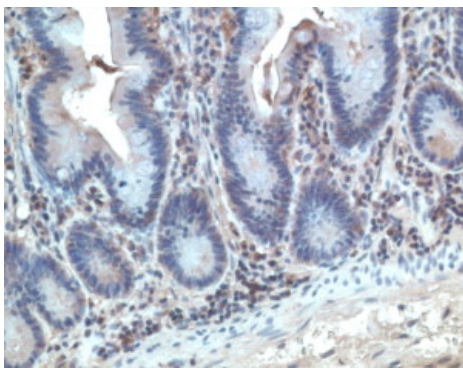
Immunohistochemistry (Formalin/PFA-fixed paraffin-embedded sections) - Anti-GPR2/CCR10 antibody (ab3904)

Immunohistochemistry on paraffin sections of human spleen.



Western blot - Anti-GPR2/CCR10 antibody (ab3904)

After retroviral transduction, CCR10-B16 cells were lysed, and CCR10 was detected by Western blotting after gel electrophoresis. A single band representing CCR10 was detected at 42 kD. After retroviral transduction, CCR10-B16 cells were lysed, and CCR10 was detected by Western blotting after gel electrophoresis. A single band representing CCR10 was detected at 42 kD.



Immunohistochemistry (Formalin/PFA-fixed paraffin-embedded sections) - Anti-GPR2/CCR10 antibody (ab3904)

ab3904, at a dilution of 1/250, staining CCR10 in human tonsil section by Immunohistochemistry (Formalin/PFA-fixed paraffin-embedded sections).



Immunohistochemistry (Formalin/PFA-fixed paraffin-embedded sections) - Anti-GPR2/CCR10 antibody (ab3904)

This image is courtesy of an anonymous Abreview

Immunohistochemical analysis of formalin-fixed, paraffin-embedded Human skin tissue, staining GPR2/CCR10 with ab3904.

Tissue was fixed with paraformaldehyde, permeabilized with 0.1% saponin and blocked with 4% serum for 30 minutes at 25°C; antigen retrieval was by heat mediation in citrate buffer (pH 6). Samples were incubated with primary antibody (1/500 in blocking buffer) for 16 hours at 4°C. A biotinylated rabbit anti-goat polyclonal IgG (10 µg/ml) was used as the secondary antibody.

Please note: All products are "FOR RESEARCH USE ONLY. NOT FOR USE IN DIAGNOSTIC PROCEDURES"

Our Abpromise to you: Quality guaranteed and expert technical support

- Replacement or refund for products not performing as stated on the datasheet
- Valid for 12 months from date of delivery
- Response to your inquiry within 24 hours
- We provide support in Chinese, English, French, German, Japanese and Spanish
- Extensive multi-media technical resources to help you
- We investigate all quality concerns to ensure our products perform to the highest standards

If the product does not perform as described on this datasheet, we will offer a refund or replacement. For full details of the Abpromise, please visit <https://www.abcam.com/abpromise> or contact our technical team.

Terms and conditions

- Guarantee only valid for products bought direct from Abcam or one of our authorized distributors