


Product datasheet

Anti-GPS2 antibody ab153986

2 Images

Overview

<b>Product name</b>	Anti-GPS2 antibody
<b>Description</b>	Rabbit polyclonal to GPS2
<b>Host species</b>	Rabbit
<b>Tested applications</b>	<b>Suitable for:</b> WB, IHC-P
<b>Species reactivity</b>	<b>Reacts with:</b> Human <b>Predicted to work with:</b> Mouse, Rat, Cow 
<b>Immunogen</b>	A recombinant protein fragment corresponding to a region within amino acids 1-253 of Human GPS2
<b>Positive control</b>	A431 and HeLa whole cell lysate ( <a href="#">ab150035</a> ); Gastric carcinoma tissue.
<b>General notes</b>	<p>The Life Science industry has been in the grips of a reproducibility crisis for a number of years. Abcam is leading the way in addressing this with our range of recombinant monoclonal antibodies and knockout edited cell lines for gold-standard validation. Please check that this product meets your needs before purchasing.</p> <p>If you have any questions, special requirements or concerns, please send us an inquiry and/or contact our Support team ahead of purchase. Recommended alternatives for this product can be found below, along with publications, customer reviews and Q&amp;As</p>

Properties

<b>Form</b>	Liquid
<b>Storage instructions</b>	Shipped at 4°C. Upon delivery aliquot. Store at -20°C or -80°C. Avoid freeze / thaw cycle.
<b>Storage buffer</b>	pH: 7.00 Preservative: 0.01% Thimerosal (merthiolate) Constituents: 78.99% PBS, 1% BSA, 20% Glycerol (glycerin, glycerine)
<b>Purity</b>	Immunogen affinity purified
<b>Clonality</b>	Polyclonal
<b>Isotype</b>	IgG

Applications

## The Abpromise guarantee

Our [Abpromise guarantee](#) covers the use of ab153986 in the following tested applications.

The application notes include recommended starting dilutions; optimal dilutions/concentrations should be determined by the end user.

Application	Abreviews	Notes
WB		1/500 - 1/3000. Predicted molecular weight: 37 kDa.
IHC-P		1/100 - 1/1000.

## Target

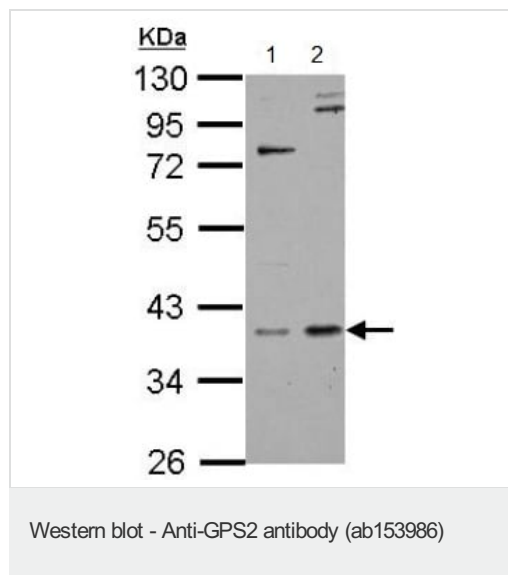
### Relevance

GPS2(G-protein pathway suppressor 2), also called AMF1, is a human nuclear protein of 327 amino acids involved in G protein-mitogen-activated protein kinase(MAPK) signalling cascades. This protein is an integral subunit of the NCOR1-HDAC3(nuclear receptor corepressor 1-histone deacetylase 3) complex which inhibits JNK activation through this subunit and thus could potentially provide an alternative mechanism for hormone-mediated antagonism of AP1(activator protein 1) function.

### Cellular localization

Nuclear

## Images



**All lanes :** Anti-GPS2 antibody (ab153986) at 1/500 dilution

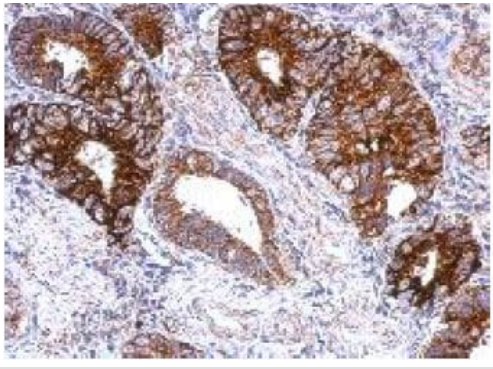
**Lane 1 :** A431 cell lysate

**Lane 2 :** HeLa cell lysate

Lysates/proteins at 30 µg per lane.

**Predicted band size:** 37 kDa

10% SDS PAGE



Immunohistochemical analysis of paraffin embedded Gastric Carcinoma labeling GPS2 using ab153986 at 1/500 dilution.

Immunohistochemistry (Formalin/PFA-fixed paraffin-embedded sections) - Anti-GPS2 antibody (ab153986)

**Please note:** All products are "FOR RESEARCH USE ONLY. NOT FOR USE IN DIAGNOSTIC PROCEDURES"

### **Our Abpromise to you: Quality guaranteed and expert technical support**

---

- Replacement or refund for products not performing as stated on the datasheet
- Valid for 12 months from date of delivery
- Response to your inquiry within 24 hours
- We provide support in Chinese, English, French, German, Japanese and Spanish
- Extensive multi-media technical resources to help you
- We investigate all quality concerns to ensure our products perform to the highest standards

If the product does not perform as described on this datasheet, we will offer a refund or replacement. For full details of the Abpromise, please visit <https://www.abcam.com/abpromise> or contact our technical team.

### **Terms and conditions**

---

- Guarantee only valid for products bought direct from Abcam or one of our authorized distributors