

Product datasheet

Anti-Granulocytes antibody [SPM250] ab75701

1 References 1 Image

Overview

Product name	Anti-Granulocytes antibody [SPM250]
Description	Mouse monoclonal [SPM250] to Granulocytes
Host species	Mouse
Specificity	ab75701 reacts with early precursor and mature forms of human myeloid cells. We have data to indicate that this antibody may not cross react with Rat. However, this has not been conclusively tested and expression levels may vary in certain cell lines/tissues.
Tested applications	Suitable for: ICC/IF, IHC-P
Species reactivity	Reacts with: Human
Immunogen	Tissue/ cell preparation (Human): Nuclei from pokeweed mitogen stimulated peripheral blood lymphocytes.
Positive control	Human tonsil or lymph node tissue
General notes	ab75701 can be useful for the detection of myeloid leukemias and granulocytic sarcomas and also can be used as a marker of granulocytes in normal tissues or inflammatory processes.

Properties

Form	Liquid
Storage instructions	Shipped at 4°C. Upon delivery aliquot and store at -20°C. Avoid freeze / thaw cycles.
Storage buffer	pH: 7.40 Preservative: 0.09% Sodium azide Constituents: BSA, 0.0268% PBS
Purity	Protein G purified
Primary antibody notes	ab75701 can be useful for the detection of myeloid leukemias and granulocytic sarcomas and also can be used as a marker of granulocytes in normal tissues or inflammatory processes.
Clonality	Monoclonal
Clone number	SPM250
Isotype	IgG1
Light chain type	kappa

Applications

Our [Abpromise guarantee](#) covers the use of **ab75701** in the following tested applications.

The application notes include recommended starting dilutions; optimal dilutions/concentrations should be determined by the end user.

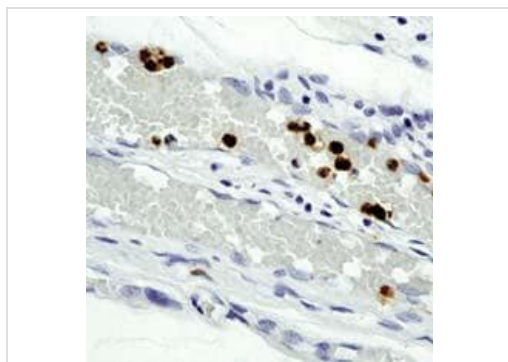
Application	Abreviews	Notes
ICC/IF		Use at an assay dependent concentration.
IHC-P		1/50.

Target

Relevance

Granulocytes are a type of white blood cell filled with microscopic granules that are little sacs containing enzymes, compounds that digest microorganisms. They are part of the innate immune system and have somewhat nonspecific, broad-based activity. They do not respond exclusively to specific antigens, as do B-cells and T-cells. Neutrophils, eosinophils and basophils are all types of granulocytes. They are named by the staining features of their granules in the laboratory: Neutrophils have "neutral" subtle granules; Eosinophils have prominent granules that stain readily with the acid dye eosin; and Basophils have prominent granules that stain readily basic (non acidic) dyes.

Images



Immunohistochemistry (Formalin/PFA-fixed paraffin-embedded sections) - Anti-Granulocytes antibody [SPM250] (ab75701)

ab75701, at a 1/50 dilution, staining Granulocytes in human tonsil tissue by Immunohistochemistry.

Please note: All products are "FOR RESEARCH USE ONLY. NOT FOR USE IN DIAGNOSTIC PROCEDURES"

Our Abpromise to you: Quality guaranteed and expert technical support

- Replacement or refund for products not performing as stated on the datasheet
- Valid for 12 months from date of delivery
- Response to your inquiry within 24 hours

- We provide support in Chinese, English, French, German, Japanese and Spanish
- Extensive multi-media technical resources to help you
- We investigate all quality concerns to ensure our products perform to the highest standards

If the product does not perform as described on this datasheet, we will offer a refund or replacement. For full details of the Abpromise, please visit <https://www.abcam.com/abpromise> or contact our technical team.

Terms and conditions

- Guarantee only valid for products bought direct from Abcam or one of our authorized distributors