

Product datasheet

Anti-GRB10 antibody ab217687

6 Images

Overview

Product name	Anti-GRB10 antibody
Description	Rabbit polyclonal to GRB10
Host species	Rabbit
Tested applications	Suitable for: IHC-P
Species reactivity	Reacts with: Mouse, Rat, Human
Immunogen	Synthetic peptide within Human GRB10 aa 574-594 conjugated to keyhole limpet haemocyanin. The exact sequence is proprietary. Sequence: YQLNKGVLPCCLKHHCIRVAL

Database link: [Q13322](#)

[Run BLAST with](#)

[Run BLAST with](#)

Positive control Mouse embryo tissue, Rat lung and spleen tissues, Human kidney tissue.

General notes

Reproducibility is key to advancing scientific discovery and accelerating scientists' next breakthrough.

Abcam is leading the way with our range of recombinant antibodies, knockout-validated antibodies and knockout cell lines, all of which support improved reproducibility.

We are also planning to innovate the way in which we present recommended applications and species on our product datasheets, so that only applications & species that have been tested in our own labs, our suppliers or by selected trusted collaborators are covered by our Abpromise™ guarantee.

In preparation for this, we have started to update the applications & species that this product is Abpromise guaranteed for.

We are also updating the applications & species that this product has been “predicted to work with,” however this information is not covered by our Abpromise guarantee.

Applications & species from publications and Abreviews that have not been tested in our own labs or in those of our suppliers are not covered by the Abpromise guarantee.

Please check that this product meets your needs before purchasing. If you have any questions, special requirements or concerns, please send us an inquiry and/or contact our Support team ahead of purchase. Recommended alternatives for this product can be found below, as well as customer reviews and Q&As.

Properties

Form	Liquid
Storage instructions	Shipped at 4°C. Store at +4°C short term (1-2 weeks). Upon delivery aliquot. Store at -20°C long term. Avoid freeze / thaw cycle.
Storage buffer	Preservative: 0.09% Sodium azide Constituents: 50% Glycerol, 1% BSA
Purity	Protein A purified
Clonality	Polyclonal
Isotype	IgG

Applications

Our [Abpromise guarantee](#) covers the use of **ab217687** in the following tested applications.

The application notes include recommended starting dilutions; optimal dilutions/concentrations should be determined by the end user.

Application	Abreviews	Notes
IHC-P		1/100 - 1/500. Perform heat mediated antigen retrieval with citrate buffer pH 6 before commencing with IHC staining protocol.

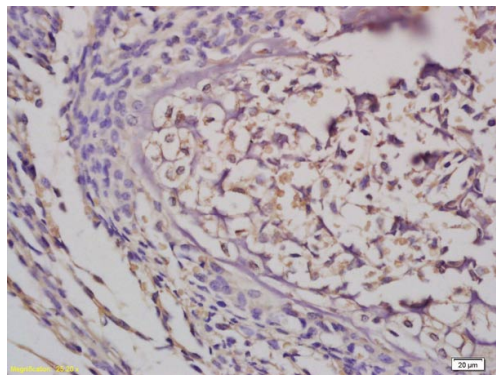
Target

Function	Adapter protein which modulates coupling of a number of cell surface receptor kinases with specific signaling pathways. Binds to, and suppress signals from, activated receptors tyrosine kinases, including the insulin (INSR) and insulin-like growth factor (IGF1R) receptors. The inhibitory effect can be achieved by 2 mechanisms: interference with the signaling pathway and increased receptor degradation. Delays and reduces AKT1 phosphorylation in response to insulin stimulation. Blocks association between INSR and IRS1 and IRS2 and prevents insulin-stimulated IRS1 and IRS2 tyrosine phosphorylation. Recruits NEDD4 to IGF1R, leading to IGF1R ubiquitination, increased internalization and degradation by both the proteasomal and lysosomal pathways. May play a role in mediating insulin-stimulated ubiquitination of INSR, leading to proteasomal degradation. Negatively regulates Wnt signaling by interacting with LRP6 intracellular portion and interfering with the binding of AXIN1 to LRP6. Positive regulator of the KDR/VEGFR-2 signaling pathway. May inhibit NEDD4-mediated degradation of KDR/VEGFR-2.
Tissue specificity	Widely expressed in fetal and adult tissues, including fetal and postnatal liver, lung, kidney, skeletal muscle, heart, spleen, skin and brain.
Sequence similarities	Belongs to the GRB7/10/14 family. Contains 1 PH domain. Contains 1 Ras-associating domain. Contains 1 SH2 domain.
Domain	The PH domain binds relatively non-specifically to several phosphoinositides, including PI(5)P, PI(4,5)P2, PI(3,4)P2 and PI(3,4,5)P3, with modest affinities.
Post-translational modifications	phosphorylated on serine residues upon EGF, FGF and PDGF stimulation.

Cellular localization

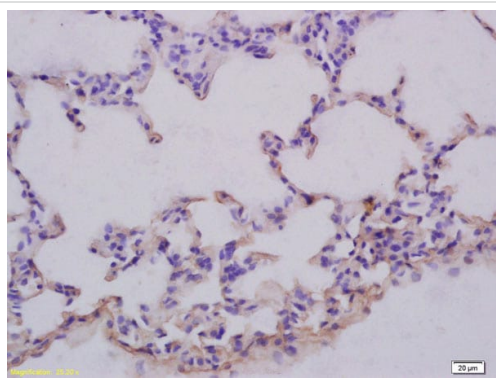
Cytoplasm. When complexed with NEDD4 and IGF1R, follows IGF1R internalization, remaining associated with early endosomes. Uncouples from IGF1R-containing endosomes before the sorting of the receptor to the lysosomal compartment.

Images



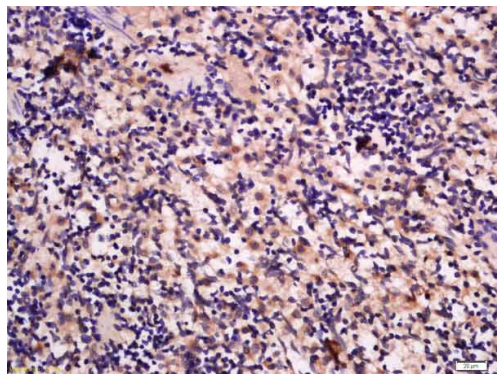
Immunohistochemical analysis of formalin fixed, paraffin embedded Mouse embryo tissue, labeling GRB10 with ab217687 at 1/200 dilution, followed by secondary detection and DAB staining.

Immunohistochemistry (Formalin/PFA-fixed paraffin-embedded sections) - Anti-GRB10 antibody (ab217687)



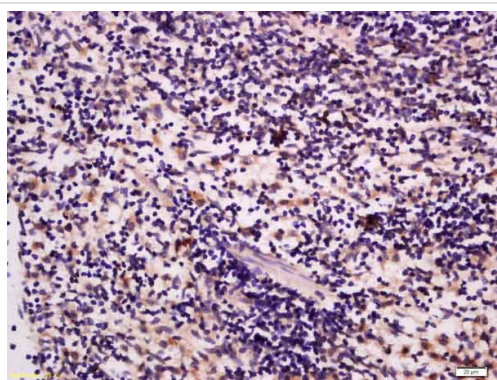
Immunohistochemical analysis of formalin fixed, paraffin embedded rat lung tissue, labeling GRB10 with ab217687 at 1/200 dilution, followed by secondary detection and DAB staining.

Immunohistochemistry (Formalin/PFA-fixed paraffin-embedded sections) - Anti-GRB10 antibody (ab217687)



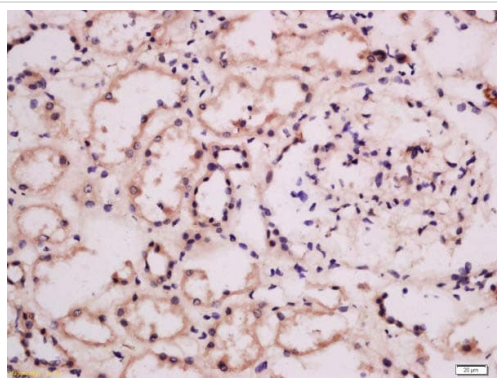
Immunohistochemistry (Formalin/PFA-fixed paraffin-embedded sections) - Anti-GRB10 antibody (ab217687)

Immunohistochemical analysis of formalin fixed, paraffin embedded rat spleen tissue, labeling GRB10 with ab217687 at 1/300 dilution, followed by secondary detection and DAB staining.



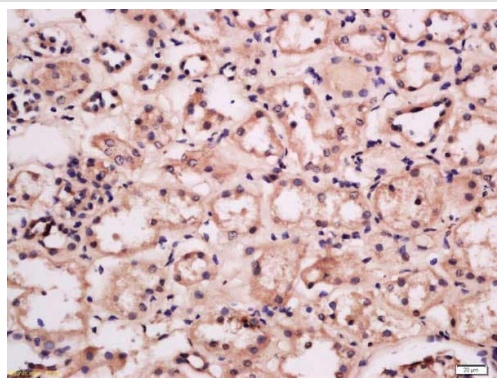
Immunohistochemistry (Formalin/PFA-fixed paraffin-embedded sections) - Anti-GRB10 antibody (ab217687)

Immunohistochemical analysis of formalin fixed, paraffin embedded rat spleen tissue, labeling GRB10 with ab217687 at 1/100 dilution, followed by secondary detection and DAB staining.



Immunohistochemistry (Formalin/PFA-fixed paraffin-embedded sections) - Anti-GRB10 antibody (ab217687)

Immunohistochemical analysis of formalin fixed, paraffin embedded human kidney tissue, labeling GRB10 with ab217687 at 1/100 dilution, followed by secondary detection and DAB staining.



Immunohistochemical analysis of formalin fixed, paraffin embedded human kidney tissue, labeling GRB10 with ab217687 at 1/300 dilution, followed by secondary detection and DAB staining.

Immunohistochemistry (Formalin/PFA-fixed paraffin-embedded sections) - Anti-GRB10 antibody (ab217687)

Please note: All products are "FOR RESEARCH USE ONLY. NOT FOR USE IN DIAGNOSTIC PROCEDURES"

Our Abpromise to you: Quality guaranteed and expert technical support

- Replacement or refund for products not performing as stated on the datasheet
- Valid for 12 months from date of delivery
- Response to your inquiry within 24 hours
- We provide support in Chinese, English, French, German, Japanese and Spanish
- Extensive multi-media technical resources to help you
- We investigate all quality concerns to ensure our products perform to the highest standards

If the product does not perform as described on this datasheet, we will offer a refund or replacement. For full details of the Abpromise, please visit <https://www.abcam.com/abpromise> or contact our technical team.

Terms and conditions

- Guarantee only valid for products bought direct from Abcam or one of our authorized distributors