

## Product datasheet

# Anti-groES antibody ab69823

[2 References](#) [1 Image](#)

### Overview

---

<b>Product name</b>	Anti-groES antibody
<b>Description</b>	Rabbit polyclonal to groES
<b>Host species</b>	Rabbit
<b>Tested applications</b>	<b>Suitable for:</b> WB, IP
<b>Species reactivity</b>	<b>Reacts with:</b> Escherichia coli
<b>Immunogen</b>	Full length GroES purified chromatographically from an E. coli strain overexpressing the protein.
<b>General notes</b>	<p>Reproducibility is key to advancing scientific discovery and accelerating scientists' next breakthrough.</p> <p>Abcam is leading the way with our range of recombinant antibodies, knockout-validated antibodies and knockout cell lines, all of which support improved reproducibility.</p> <p>We are also planning to innovate the way in which we present recommended applications and species on our product datasheets, so that only applications &amp; species that have been tested in our own labs, our suppliers or by selected trusted collaborators are covered by our Abpromise™ guarantee.</p> <p>In preparation for this, we have started to update the applications &amp; species that this product is Abpromise guaranteed for.</p> <p>We are also updating the applications &amp; species that this product has been "predicted to work with," however this information is not covered by our Abpromise guarantee.</p> <p>Applications &amp; species from publications and Abreviews that have not been tested in our own labs or in those of our suppliers are not covered by the Abpromise guarantee.</p> <p>Please check that this product meets your needs before purchasing. If you have any questions, special requirements or concerns, please send us an inquiry and/or contact our Support team ahead of purchase. Recommended alternatives for this product can be found below, as well as customer reviews and Q&amp;As.</p>

### Properties

---

<b>Form</b>	Liquid
<b>Storage instructions</b>	Shipped at 4°C. Upon delivery aliquot and store at -20°C or -80°C. Avoid repeated freeze / thaw cycles.

<b>Storage buffer</b>	Constituent: Whole serum
<b>Purity</b>	Whole antiserum
<b>Clonality</b>	Polyclonal
<b>Isotype</b>	IgG

## Applications

Our [Abpromise guarantee](#) covers the use of **ab69823** in the following tested applications.

The application notes include recommended starting dilutions; optimal dilutions/concentrations should be determined by the end user.

Application	Abreviews	Notes
WB		1/5000. Detects a band of approximately 10 kDa (predicted molecular weight: 10 kDa). for colorimetric detection. 1/500 for ECL.
IP		1/200.

## Target

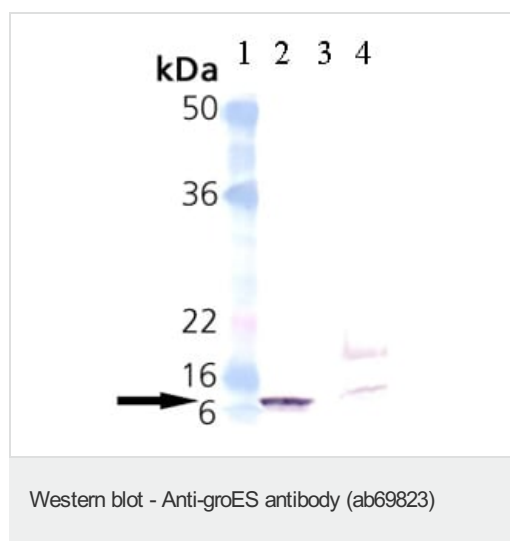
### Relevance

GroEL and GroES are E.coli chaperones, which are homologs of the mitochondrial chaperones Hsp60 and Hsp10 respectively. GroEL is a double toroidal assembly of 14 identical subunits which form two heptameric rings stacked back-to-back, with a cavity at each end. GroEL and its co-chaperonin GroES facilitate protein folding in an ATP-dependent mechanism. Binding of substrate protein, in addition to binding of ATP, induces a conformational change that allows association of this binary complex with a separate lid structure, GroES.

### Cellular localization

Cytoplasmic

## Images



**All lanes :** Anti-groES antibody (ab69823) at 1/5000 dilution

**Lane 1 :** Molecular weight marker

**Lane 2 :** groES recombinant E. coli protein

**Lane 3 :** No lysates (empty)

**Lane 4 :** Lysates prepared from E.coli

**Predicted band size:** 10 kDa

**Please note:** All products are "FOR RESEARCH USE ONLY. NOT FOR USE IN DIAGNOSTIC PROCEDURES"

## **Our Abpromise to you: Quality guaranteed and expert technical support**

---

- Replacement or refund for products not performing as stated on the datasheet
- Valid for 12 months from date of delivery
- Response to your inquiry within 24 hours
  
- We provide support in Chinese, English, French, German, Japanese and Spanish
- Extensive multi-media technical resources to help you
- We investigate all quality concerns to ensure our products perform to the highest standards

If the product does not perform as described on this datasheet, we will offer a refund or replacement. For full details of the Abpromise, please visit <https://www.abcam.com/abpromise> or contact our technical team.

## **Terms and conditions**

---

- Guarantee only valid for products bought direct from Abcam or one of our authorized distributors