

Product datasheet

Anti-Growth Hormone antibody [EPR11047(B)] ab155276

Recombinant RabMAb

1 References 7 Images

Overview

Product name	Anti-Growth Hormone antibody [EPR11047(B)]
Description	Rabbit monoclonal [EPR11047(B)] to Growth Hormone
Host species	Rabbit
Tested applications	Suitable for: WB, IHC-P, IP Unsuitable for: ICC
Species reactivity	Reacts with: Human
Immunogen	Synthetic peptide within Human Growth Hormone aa 50-150. The exact sequence is proprietary. Database link: P01241
Positive control	Human placenta lysate; Human pituitary gland tissue.
General notes	Mouse, Rat: We have preliminary internal testing data to indicate this antibody may not react with these species. Please contact us for more information.

This product is a recombinant monoclonal antibody, which offers several advantages including:

- High batch-to-batch consistency and reproducibility
- Improved sensitivity and specificity
- Long-term security of supply
- Animal-free production

For more information [see here](#).

Our RabMAb[®] technology is a patented hybridoma-based technology for making rabbit monoclonal antibodies. For details on our patents, please refer to [RabMAb[®] patents](#).

Properties

Form	Liquid
Storage instructions	Shipped at 4°C. Store at -20°C.
Storage buffer	Preservative: 0.01% Sodium azide Constituents: 9% PBS, 40% Glycerol, 0.05% BSA, 50% Tissue culture supernatant
Purity	Tissue culture supernatant
Clonality	Monoclonal

Clone number EPR11047(B)
Isotype IgG

Applications

Our [Abpromise guarantee](#) covers the use of **ab155276** in the following tested applications.

The application notes include recommended starting dilutions; optimal dilutions/concentrations should be determined by the end user.

Application	Abreviews	Notes
WB		1/1000 - 1/10000. Predicted molecular weight: 25 kDa.
IHC-P		1/250 - 1/500. Perform heat mediated antigen retrieval with citrate buffer pH 6 before commencing with IHC staining protocol.
IP		1/10 - 1/100.

Application notes Is unsuitable for ICC.

Target

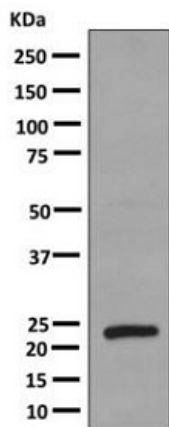
Function Plays an important role in growth control. Its major role in stimulating body growth is to stimulate the liver and other tissues to secrete IGF-1. It stimulates both the differentiation and proliferation of myoblasts. It also stimulates amino acid uptake and protein synthesis in muscle and other tissues.

Involvement in disease Defects in GH1 are a cause of growth hormone deficiency isolated type 1A (IGHD1A) [MIM:262400]; also known as pituitary dwarfism I. IGHD1A is an autosomal recessive deficiency of GH which causes short stature. IGHD1A patients have an absence of GH with severe dwarfism and often develop anti-GH antibodies when given exogenous GH.
Defects in GH1 are a cause of growth hormone deficiency isolated type 1B (IGHD1B) [MIM:612781]; also known as dwarfism of Sindh. IGHD1B is an autosomal recessive deficiency of GH which causes short stature. IGHD1B patients have low but detectable levels of GH. Dwarfism is less severe than in IGHD1A and patients usually respond well to exogenous GH.
Defects in GH1 are the cause of Kowarski syndrome (KWKS) [MIM:262650]; also known as pituitary dwarfism VI.
Defects in GH1 are a cause of growth hormone deficiency isolated type 2 (IGHD2) [MIM:173100]. IGHD2 is an autosomal dominant deficiency of GH which causes short stature. Clinical severity is variable. Patients have a positive response and immunologic tolerance to growth hormone therapy.

Sequence similarities Belongs to the somatotropin/prolactin family.

Cellular localization Secreted.

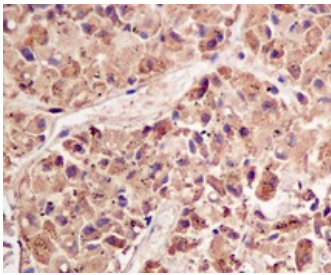
Images



Western blot - Anti-Growth Hormone antibody
[EPR11047(B)] (ab155276)

Anti-Growth Hormone antibody [EPR11047(B)] (ab155276) at
1/1000 dilution + Human placenta lysate at 10 µg

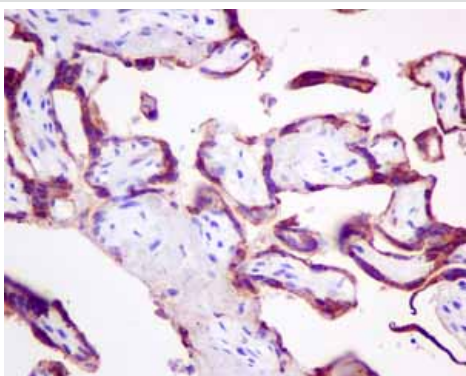
Predicted band size: 25 kDa



Immunohistochemistry (Formalin/PFA-fixed paraffin-
embedded sections) - Anti-Growth Hormone
antibody [EPR11047(B)] (ab155276)

Immunohistochemical analysis of paraffin embedded human
pituitary gland tissue labeling Human Growth Hormone with
ab155276 at a 1/250 dilution.

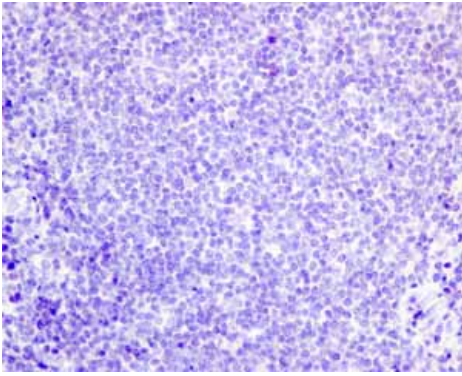
Perform heat mediated antigen retrieval with citrate buffer pH 6
before commencing with IHC staining protocol.



Immunohistochemistry (Formalin/PFA-fixed paraffin-
embedded sections) - Anti-Growth Hormone
antibody [EPR11047(B)] (ab155276)

Immunohistochemical analysis of paraffin embedded Human
placenta tissue using ab155276 showing +ve staining.

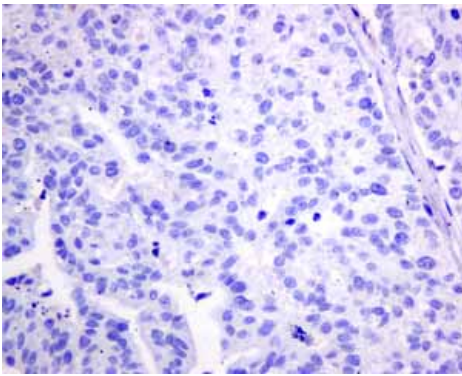
Perform heat mediated antigen retrieval with citrate buffer pH 6
before commencing with IHC staining protocol.



Immunohistochemistry (Formalin/PFA-fixed paraffin-embedded sections) - Anti-Growth Hormone antibody [EPR11047(B)] (ab155276)

Immunohistochemical analysis of paraffin embedded Human normal tonsil tissue using ab155276 showing -ve staining.

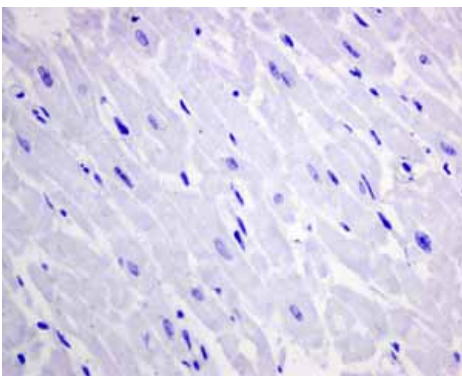
Perform heat mediated antigen retrieval with citrate buffer pH 6 before commencing with IHC staining protocol.



Immunohistochemistry (Formalin/PFA-fixed paraffin-embedded sections) - Anti-Growth Hormone antibody [EPR11047(B)] (ab155276)

Immunohistochemical analysis of paraffin embedded Human cervical carcinoma tissue using ab155276 showing -ve staining.

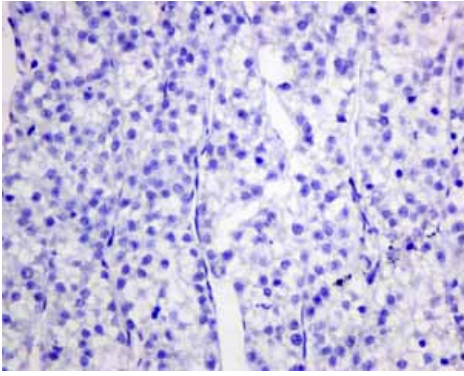
Perform heat mediated antigen retrieval with citrate buffer pH 6 before commencing with IHC staining protocol.



Immunohistochemistry (Formalin/PFA-fixed paraffin-embedded sections) - Anti-Growth Hormone antibody [EPR11047(B)] (ab155276)

Immunohistochemical analysis of paraffin embedded Human heart tissue using ab155276 showing -ve staining.

Perform heat mediated antigen retrieval with citrate buffer pH 6 before commencing with IHC staining protocol.



Immunohistochemistry (Formalin/PFA-fixed paraffin-embedded sections) - Anti-Growth Hormone antibody [EPR11047(B)] (ab155276)

Immunohistochemical analysis of paraffin embedded Human hepatocellular carcinoma tissue using ab155276 showing -ve staining.

Perform heat mediated antigen retrieval with citrate buffer pH 6 before commencing with IHC staining protocol.

Please note: All products are "FOR RESEARCH USE ONLY. NOT FOR USE IN DIAGNOSTIC PROCEDURES"

Our Abpromise to you: Quality guaranteed and expert technical support

- Replacement or refund for products not performing as stated on the datasheet
- Valid for 12 months from date of delivery
- Response to your inquiry within 24 hours
- We provide support in Chinese, English, French, German, Japanese and Spanish
- Extensive multi-media technical resources to help you
- We investigate all quality concerns to ensure our products perform to the highest standards

If the product does not perform as described on this datasheet, we will offer a refund or replacement. For full details of the Abpromise, please visit <https://www.abcam.com/abpromise> or contact our technical team.

Terms and conditions

- Guarantee only valid for products bought direct from Abcam or one of our authorized distributors