


Product datasheet

Anti-GRP94 antibody ab230842

5 Images

Overview

Product name	Anti-GRP94 antibody
Description	Rabbit polyclonal to GRP94
Host species	Rabbit
Tested applications	Suitable for: IHC-P, WB, Flow Cyt, ICC/IF
Species reactivity	Reacts with: Mouse, Human, Chinese hamster Predicted to work with: Rat, Chicken, Cow, Pig, Monkey 
Immunogen	Synthetic peptide within GRP94 aa 16-43 (N terminal) conjugated to keyhole limpet haemocyanin. The exact sequence is proprietary. Database link: P14625
Positive control	IHC-P: Human testis and liver tissues. ICC/IF: NCI-H460 cells. WB: HepG2, CHO-K1, K562 and HeLa whole cell lysate (ab150035); Mouse liver lysate. Flow Cyt: K562 cells.

Properties

Form	Liquid
Storage instructions	Shipped at 4°C. Store at +4°C short term (1-2 weeks). Upon delivery aliquot. Store at -20°C long term. Avoid freeze / thaw cycle.
Storage buffer	Preservative: 0.09% Sodium azide Constituent: PBS
Purity	Protein A purified
Clonality	Polyclonal
Isotype	IgG

Applications

Our [Abpromise guarantee](#) covers the use of **ab230842** in the following tested applications.

The application notes include recommended starting dilutions; optimal dilutions/concentrations should be determined by the end user.

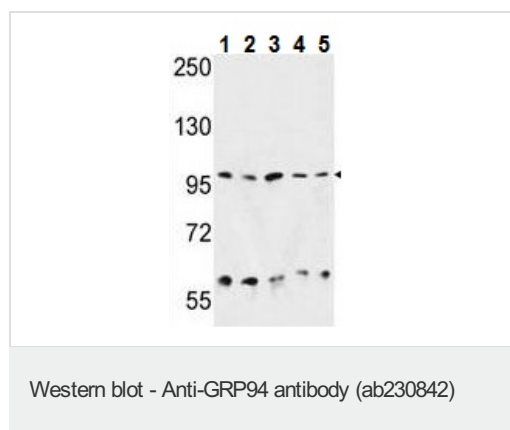
Application	Abreviews	Notes
IHC-P		1/100.

Application	Abreviews	Notes
WB		1/1000. Predicted molecular weight: 92 kDa.
Flow Cyt		1/10 - 1/50.
ICC/IF		1/10 - 1/50.

Target

Function	Molecular chaperone that functions in the processing and transport of secreted proteins. Functions in endoplasmic reticulum associated degradation (ERAD). Has ATPase activity.
Sequence similarities	Belongs to the heat shock protein 90 family.
Cellular localization	Endoplasmic reticulum lumen. Melanosome. Identified by mass spectrometry in melanosome fractions from stage I to stage IV.

Images



All lanes : Anti-GRP94 antibody (ab230842) at 1/1000 dilution

Lane 1 : HepG2 (human liver hepatocellular carcinoma cell line) cell lysate

Lane 2 : Mouse liver lysate

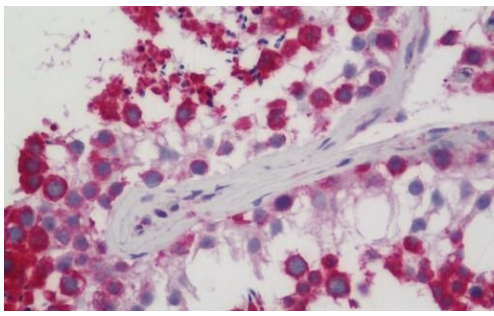
Lane 3 : CHO-K1 (chinese hamster ovary cell line) cell lysate

Lane 4 : K562 (human chronic myelogenous leukemia cell line from bone marrow) cell lysate

Lane 5 : HeLa (human epithelial cell line from cervix adenocarcinoma) cell lysate

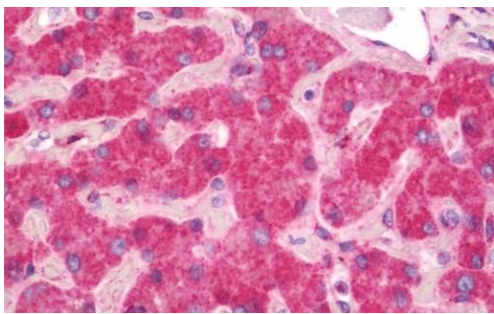
Lysates/proteins at 35 µg per lane.

Predicted band size: 92 kDa



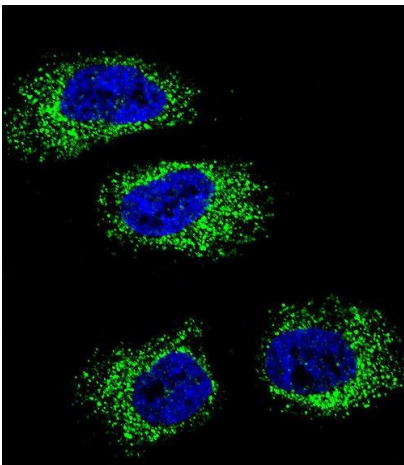
Immunohistochemistry (Formalin/PFA-fixed paraffin-embedded sections) - Anti-GRP94 antibody (ab230842)

Formalin-fixed, paraffin-embedded human testis tissue stained for GRP94 using ab230842 at 1/100 dilution in immunohistochemical analysis.



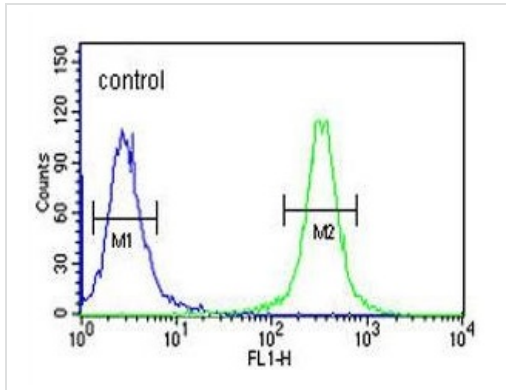
Immunohistochemistry (Formalin/PFA-fixed paraffin-embedded sections) - Anti-GRP94 antibody (ab230842)

Formalin-fixed, paraffin-embedded human liver tissue stained for GRP94 using ab230842 at 1/100 dilution in immunohistochemical analysis.



Immunocytochemistry/ Immunofluorescence - Anti-GRP94 antibody (ab230842)

NCI-H460 (human lung cancer cell line) cells stained for GRP94 (green) using ab230842 at 1/10 dilution in confocal ICC/IF, followed by Alexa Fluor 488[®] conjugated Goat Anti-Rabbit IgG secondary antibody. DAPI was used to stain the cell nuclear (blue).



Flow Cytometry - Anti-GRP94 antibody (ab230842)

Flow cytometric analysis of K562 (human chronic myelogenous leukemia cell line from bone marrow) cell line labeling GRP94 with ab230842 at 1/10 dilution (green) compared with a negative control cell (blue). FITC-conjugated goat-anti-rabbit secondary antibodies were used for the analysis.

Please note: All products are "FOR RESEARCH USE ONLY. NOT FOR USE IN DIAGNOSTIC PROCEDURES"

Our Abpromise to you: Quality guaranteed and expert technical support

- Replacement or refund for products not performing as stated on the datasheet
- Valid for 12 months from date of delivery
- Response to your inquiry within 24 hours
- We provide support in Chinese, English, French, German, Japanese and Spanish
- Extensive multi-media technical resources to help you
- We investigate all quality concerns to ensure our products perform to the highest standards

If the product does not perform as described on this datasheet, we will offer a refund or replacement. For full details of the Abpromise, please visit <https://www.abcam.com/abpromise> or contact our technical team.

Terms and conditions

- Guarantee only valid for products bought direct from Abcam or one of our authorized distributors