

## Product datasheet

# Anti-GRSF1 antibody [EPR16679] ab194358

Recombinant RabMAb

[4 Images](#)

### Overview

<b>Product name</b>	Anti-GRSF1 antibody [EPR16679]
<b>Description</b>	Rabbit monoclonal [EPR16679] to GRSF1
<b>Host species</b>	Rabbit
<b>Tested applications</b>	<b>Suitable for:</b> Flow Cyt, IHC-P, WB, ICC/IF
<b>Species reactivity</b>	<b>Reacts with:</b> Human
<b>Immunogen</b>	Synthetic peptide within Human GRSF1 aa 350-450. The exact sequence is proprietary. Database link: <a href="#">Q12849</a>
<b>Positive control</b>	HeLa, HepG2, 293 and Jurkat whole cell lysate ( <a href="#">ab7899</a> ); Human liver tissue; HeLa cells.
<b>General notes</b>	

This product is a recombinant monoclonal antibody, which offers several advantages including:

- High batch-to-batch consistency and reproducibility
- Improved sensitivity and specificity
- Long-term security of supply
- Animal-free production

For more information [see here](#).

Our RabMAb<sup>®</sup> technology is a patented hybridoma-based technology for making rabbit monoclonal antibodies. For details on our patents, please refer to [RabMAb<sup>®</sup> patents](#).

### Properties

<b>Form</b>	Liquid
<b>Storage instructions</b>	Shipped at 4°C. Store at +4°C short term (1-2 weeks). Upon delivery aliquot. Store at -20°C long term. Avoid freeze / thaw cycle.
<b>Storage buffer</b>	Preservative: 0.01% Sodium azide Constituents: 59% PBS, 40% Glycerol, 0.05% BSA
<b>Purity</b>	Protein A purified
<b>Clonality</b>	Monoclonal
<b>Clone number</b>	EPR16679

Isotype

IgG

## Applications

Our [Abpromise guarantee](#) covers the use of **ab194358** in the following tested applications.

The application notes include recommended starting dilutions; optimal dilutions/concentrations should be determined by the end user.

Application	Abreviews	Notes
Flow Cyt		1/250.
IHC-P		1/100. Perform heat mediated antigen retrieval with Tris/EDTA buffer pH 9.0 before commencing with IHC staining protocol.
WB		1/1000 - 1/10000. Detects a band of approximately 53 kDa (predicted molecular weight: 53 kDa).
ICC/IF		1/100.

## Target

### Function

Regulator of post-transcriptional mitochondrial gene expression, required for assembly of the mitochondrial ribosome and for recruitment of mRNA and lncRNA. Binds RNAs containing the 14 base G-rich element. Preferentially binds RNAs transcribed from three contiguous genes on the light strand of mtDNA, the ND6 mRNA, and the long non-coding RNAs for MT-CYB and MT-ND5, each of which contains multiple consensus binding sequences.

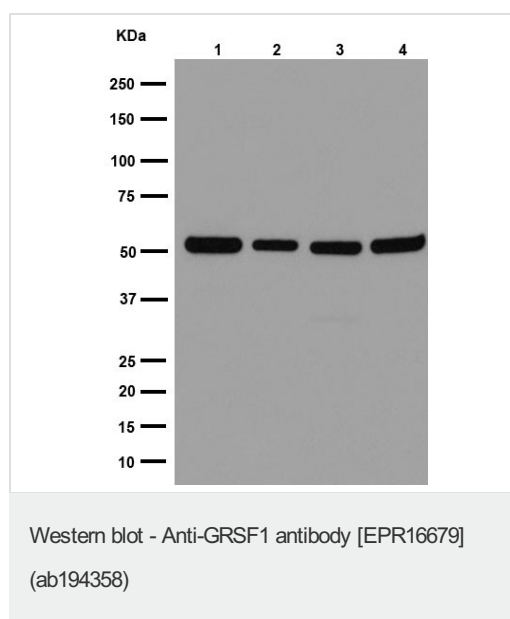
### Sequence similarities

Contains 3 RRM (RNA recognition motif) domains.

### Cellular localization

Cytoplasm. Mitochondrion matrix > mitochondrion nucleoid. Forms granules that colocalize with foci of newly synthesized mtRNA next to mitochondrial nucleoids.

## Images



**All lanes** : Anti-GRSF1 antibody [EPR16679] (ab194358) at 1/10000 dilution

**Lane 1** : HeLa cell lysate

**Lane 2** : 293 cell lysate

**Lane 3** : HepG2 cell lysate

**Lane 4** : Jurkat cell lysate

Lysates/proteins at 20 µg per lane.

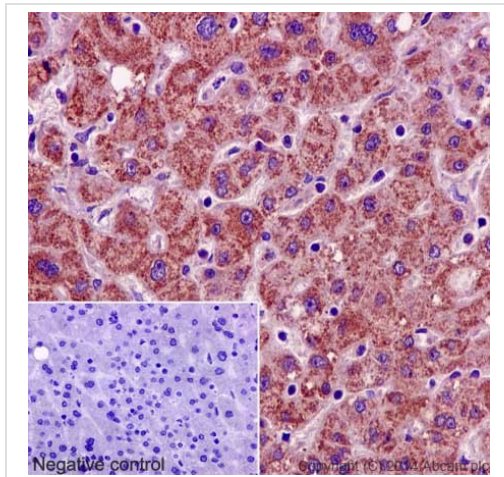
### Secondary

**All lanes** : Goat Anti-Rabbit IgG, (H+L), Peroxidase conjugated at 1/1000 dilution

**Predicted band size:** 53 kDa

**Observed band size:** 53 kDa

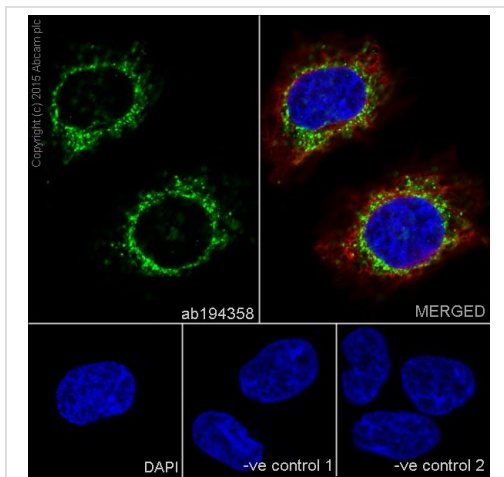
Blocking/Dilution buffer: 5% NFDN/TBST.



Immunohistochemical analysis of paraffin-embedded Human liver tissue labeling GRSF1 with ab194358 at 1/100 dilution, followed by Goat Anti-Rabbit IgG H&L (HRP) (ab97051) at 1/500 dilution. Counter stained with Hematoxylin.

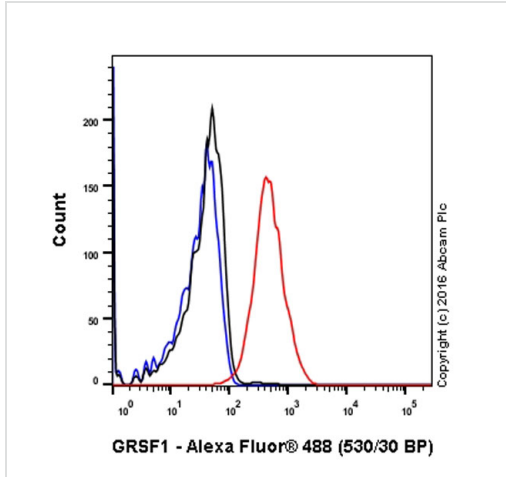
Perform heat mediated antigen retrieval with Tris/EDTA buffer pH 9.0 before commencing with IHC staining protocol.

Immunohistochemistry (Formalin/PFA-fixed paraffin-embedded sections) - Anti-GRSF1 antibody [EPR16679] (ab194358)



Immunofluorescent analysis of 4% paraformaldehyde-fixed, 0.1% Triton X-100 permeabilized HeLa cells labeling GRSF1 with ab194358 at 1/100 dilution, followed by Goat anti-rabbit IgG (Alexa Fluor® 488) (ab150077) secondary antibody at 1/400 dilution. The nuclear counter stain is DAPI (blue).

Immunocytochemistry/ Immunofluorescence - Anti-GRSF1 antibody [EPR16679] (ab194358)



Flow cytometry analysis of HeLa cells labelling GRSF1 (red) with purified ab194358 at dilution of 1/250. The secondary antibody used was Alexa Fluor® 488 goat-anti-rabbit IgG (1/2000). Cells were fixed with 4% paraformaldehyde and permeabilised with 90% methanol. Isotype control antibody was Rabbit monoclonal IgG (black). The blue line shows cells without incubation with primary antibody and secondary antibody.

Flow Cytometry - Anti-GRSF1 antibody [EPR16679]  
(ab194358)

**Please note:** All products are "FOR RESEARCH USE ONLY. NOT FOR USE IN DIAGNOSTIC PROCEDURES"

### Our Abpromise to you: Quality guaranteed and expert technical support

- Replacement or refund for products not performing as stated on the datasheet
- Valid for 12 months from date of delivery
- Response to your inquiry within 24 hours
- We provide support in Chinese, English, French, German, Japanese and Spanish
- Extensive multi-media technical resources to help you
- We investigate all quality concerns to ensure our products perform to the highest standards

If the product does not perform as described on this datasheet, we will offer a refund or replacement. For full details of the Abpromise, please visit <https://www.abcam.com/abpromise> or contact our technical team.

### Terms and conditions

- Guarantee only valid for products bought direct from Abcam or one of our authorized distributors