

## Product datasheet

# Anti-GSDMD antibody ab245565

1 Image

### Overview

<b>Product name</b>	Anti-GSDMD antibody
<b>Description</b>	Rabbit polyclonal to GSDMD
<b>Host species</b>	Rabbit

### Tested Applications & Species

Application	Species
IP	 Human

See all applications and species data 

<b>Immunogen</b>	Synthetic peptide within Human GSDMD aa 225-275. The exact sequence is proprietary. Database link: <a href="#">P57764</a>
<b>Positive control</b>	IP: GSDMD IP in Jurkat whole cell lysate.
<b>General notes</b>	ab245565 has not performed satisfactorily when used for WB of GSDMD in crude preparations (e.g. whole cell lysate). This antibody can be used for WB of enriched (e.g. immunoprecipitated) sources of GSDMD.

The Life Science industry has been in the grips of a reproducibility crisis for a number of years. Abcam is leading the way in addressing the problem with our range of recombinant monoclonal antibodies and knockout edited cell lines for gold-standard validation.

One factor contributing to the crisis is the use of antibodies that are not suitable. This can lead to misleading results and the use of incorrect data informing project assumptions and direction. To help address this challenge, we have introduced an application and species grid on our primary antibody datasheets to make it easy to simplify identification of the right antibody for your needs.

Learn more [here](#).

### Properties

<b>Form</b>	Liquid
<b>Storage instructions</b>	Shipped at 4°C. Store at +4°C short term (1-2 weeks). Upon delivery aliquot. Store at -20°C long term. Avoid freeze / thaw cycle.
<b>Storage buffer</b>	pH: 6.8


Preservative: 0.09% Sodium azide  
Constituents: Tris buffered saline, 0.1% BSA

<b>Purity</b>	Immunogen affinity purified
<b>Purification notes</b>	ab245565 was affinity purified using an epitope specific to GSDMD immobilized on solid support.
<b>Clonality</b>	Polyclonal
<b>Isotype</b>	IgG

## Applications

**The Abpromise guarantee** Our [Abpromise guarantee](#) covers the use of **ab245565** in the following tested applications. The application notes include recommended starting dilutions; optimal dilutions/concentrations should be determined by the end user.

 <b>Guaranteed</b> Tested applications are guaranteed to work and covered by our Abpromise guarantee.	 <b>Predicted</b> Predicted to work for this combination of applications and species but not guaranteed.	 <b>Incompatible</b> Does not work for this combination of applications and species.
--	--	--

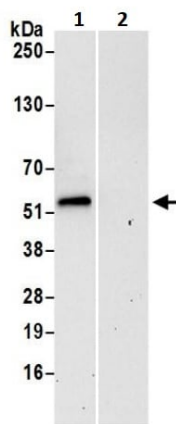
Application	Species
IP	 Human

Application	Abreviews	Notes
IP		Use at an assay dependent concentration. 8 - 15 µl/mg lysate

## Target

**Sequence similarities** Belongs to the gasdermin family.

## Images



Immunoprecipitation - Anti-GSDMD antibody  
(ab245565)

GSDMD was immunoprecipitated from Jurkat (Human T cell leukemia cell line from peripheral blood) whole cell lysate (1 mg per IP reaction; 20% of IP loaded) prepared using NETN lysis buffer. ab245565 used for IP at 8  $\mu$ l per reaction. For WB at a 1/400 dilution.

**Lane 1:** ab245565 IP in Jurkat whole cell lysate.

**Lane 2:** Control IgG IP in Jurkat whole cell lysate.

Chemiluminescence detection: 30 seconds.

**Please note:** All products are "FOR RESEARCH USE ONLY. NOT FOR USE IN DIAGNOSTIC PROCEDURES"

### Our Abpromise to you: Quality guaranteed and expert technical support

- Replacement or refund for products not performing as stated on the datasheet
- Valid for 12 months from date of delivery
- Response to your inquiry within 24 hours
- We provide support in Chinese, English, French, German, Japanese and Spanish
- Extensive multi-media technical resources to help you
- We investigate all quality concerns to ensure our products perform to the highest standards

If the product does not perform as described on this datasheet, we will offer a refund or replacement. For full details of the Abpromise, please visit <https://www.abcam.com/abpromise> or contact our technical team.

### Terms and conditions

- Guarantee only valid for products bought direct from Abcam or one of our authorized distributors