

Product datasheet

Anti-GSK3 alpha antibody ab131344

1 References 3 Images

Overview

|                            |  |
|----------------------------|--|
| <b>Product name</b>        | Anti-GSK3 alpha antibody   |
| <b>Description</b>         | Rabbit polyclonal to GSK3 alpha  |
| <b>Host species</b>        | Rabbit   |
| <b>Tested applications</b> | <b>Suitable for:</b> WB, IHC-P, ICC/IF   |
| <b>Species reactivity</b>  | <b>Reacts with:</b> Mouse, Rat, Human  |
| <b>Immunogen</b>           | Synthetic peptide conjugated to KLH, surrounding amino acids 19-23 ( T-S-S-F-A ) of Human GSK3 alpha (NP_063937.2).<br><a href="#">Run BLAST with</a> <a href="#">Run BLAST with</a> |
| <b>Positive control</b>    | MCF7 cells; 293 cell extracts; Human breast carcinoma tissue.  |

Properties

|                             |  |
|-----------------------------|--|
| <b>Form</b>                 | Liquid   |
| <b>Storage instructions</b> | Shipped at 4°C. Store at -20°C. Stable for 12 months at -20°C.   |
| <b>Storage buffer</b>       | pH: 7.40<br>Preservative: 0.02% Sodium azide<br>Constituents: 49% PBS, 50% Glycerol, 0.88% Sodium chloride<br>Note: PBS is without Mg <sup>2+</sup> and Ca <sup>2+</sup> |
| <b>Purity</b>               | Immunogen affinity purified  |
| <b>Purification notes</b>   | ab131344 was purified by affinity chromatography using epitope specific peptide.   |
| <b>Clonality</b>            | Polyclonal   |
| <b>Isotype</b>              | IgG  |

Applications

Our [Abpromise guarantee](#) covers the use of **ab131344** in the following tested applications.

The application notes include recommended starting dilutions; optimal dilutions/concentrations should be determined by the end user.

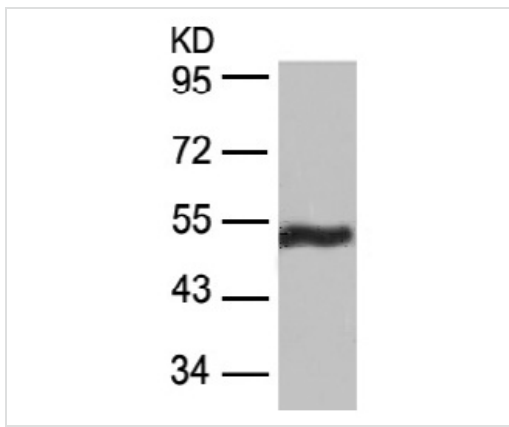
| Application | Abreviews | Notes  |
|-------------|-----------|--|
| WB          |           | 1/500 - 1/1000. Detects a band of approximately 51 kDa (predicted molecular weight: 51 kDa). |
| IHC-P       |           | 1/50 - 1/100.  |
| ICC/IF      |           | 1/100 - 1/200.   |

**Target**

**Function** Implicated in the hormonal control of several regulatory proteins including glycogen synthase, MYB and the transcription factor JUN.

**Sequence similarities** Belongs to the protein kinase superfamily. CMGC Ser/Thr protein kinase family. GSK-3 subfamily. Contains 1 protein kinase domain.

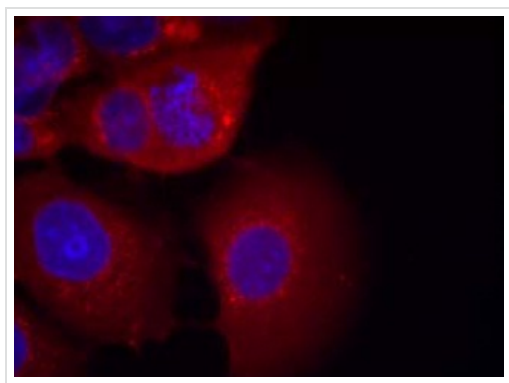
**Images**



Anti-GSK3 alpha antibody (ab131344) at 1/500 dilution + 293 cell extracts

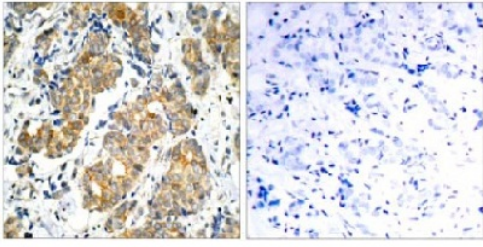
**Predicted band size:** 51 kDa

Western blot - Anti-GSK3 alpha antibody (ab131344)



Immunofluorescent analysis of methanol-fixed MCF7 cells labelling GSK3 alpha with ab131344 at 1/100 dilution.

Immunocytochemistry/ Immunofluorescence - Anti-GSK3 alpha antibody (ab131344)



Immunohistochemistry (Formalin/PFA-fixed paraffin-embedded sections) - Anti-GSK3 alpha antibody (ab131344)

Immunohistochemical analysis of paraffin-embedded Human breast carcinoma tissue labelling GSK3 alpha with ab131344 at 1/50 dilution, in the absence (left) and presence (right) of the blocking peptide.

**Please note:** All products are "FOR RESEARCH USE ONLY. NOT FOR USE IN DIAGNOSTIC PROCEDURES"

### **Our Abpromise to you: Quality guaranteed and expert technical support**

---

- Replacement or refund for products not performing as stated on the datasheet
- Valid for 12 months from date of delivery
- Response to your inquiry within 24 hours
- We provide support in Chinese, English, French, German, Japanese and Spanish
- Extensive multi-media technical resources to help you
- We investigate all quality concerns to ensure our products perform to the highest standards

If the product does not perform as described on this datasheet, we will offer a refund or replacement. For full details of the Abpromise, please visit <https://www.abcam.com/abpromise> or contact our technical team.

### **Terms and conditions**

---

- Guarantee only valid for products bought direct from Abcam or one of our authorized distributors