

Product datasheet

Anti-GSK3 alpha (phospho S21) antibody ab131112

3 Images

Overview

Product name	Anti-GSK3 alpha (phospho S21) antibody
Description	Rabbit polyclonal to GSK3 alpha (phospho S21)
Host species	Rabbit
Specificity	ab131112 detects GSK3 alpha only when phosphorylated at serine 21. It does not detect GSK3 alpha phosphorylated at serine 9.
Tested applications	Suitable for: WB, IHC-P, ICC/IF
Species reactivity	Reacts with: Mouse, Rat, Human
Immunogen	Synthetic phosphopeptide conjugated to KLH, surrounding the phosphorylation site of serine 21 (T-S-S(p)-F-A) derived from Human GSK3 alpha.
Positive control	HeLa cells; 293 cell extracts treated with serum; Human breast carcinoma tissue.

Properties

Form	Liquid
Storage instructions	Shipped at 4°C. Store at -20°C. Stable for 12 months at -20°C.
Storage buffer	pH: 7.40 Preservative: 0.02% Sodium azide Constituents: 49% PBS, 50% Glycerol, 0.88% Sodium chloride Note: PBS without Mg ²⁺ and Ca ²⁺ .
Purity	Immunogen affinity purified
Purification notes	ab131112 was affinity-purified by affinity-chromatography using epitope-specific phosphopeptide. The antibody against non-phosphopeptide was removed by chromatography using non-phosphopeptide corresponding to the phosphorylation site.
Clonality	Polyclonal
Isotype	IgG

Applications

Our [Abpromise guarantee](#) covers the use of **ab131112** in the following tested applications.

The application notes include recommended starting dilutions; optimal dilutions/concentrations should be determined by the end user.

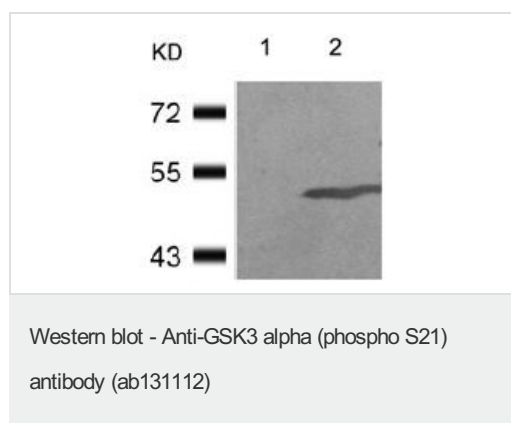
Application	Abreviews	Notes
WB		1/500 - 1/1000. Detects a band of approximately 51 kDa (predicted molecular weight: 51 kDa).
IHC-P		1/50 - 1/100.
ICC/IF		1/100 - 1/200.

Target

Function Implicated in the hormonal control of several regulatory proteins including glycogen synthase, MYB and the transcription factor JUN.

Sequence similarities Belongs to the protein kinase superfamily. CMGC Ser/Thr protein kinase family. GSK-3 subfamily. Contains 1 protein kinase domain.

Images



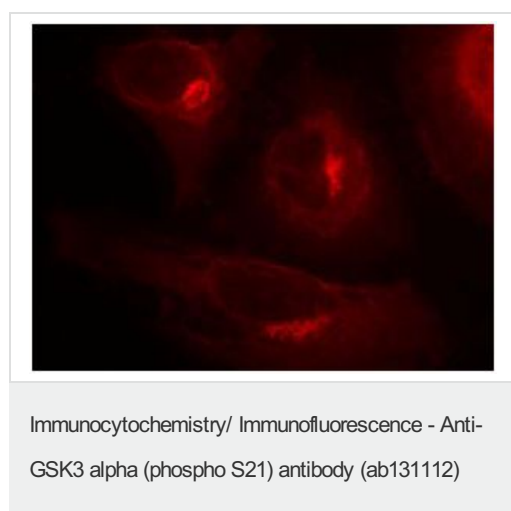
All lanes : Anti-GSK3 alpha (phospho S21) antibody (ab131112) at 1/500 dilution

Lane 1 : 293 cell extracts, untreated

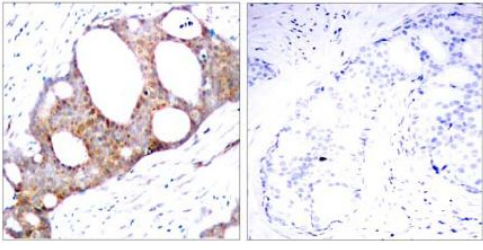
Lane 2 : 293 cell extracts, treated with serum

Predicted band size: 51 kDa

Incubate membrane with diluted antibody in 5% non-fat milk, 1 x TBS, 0.1% Tween20 at 4°C overnight with shaking.



Immunofluorescent analysis of methanol-fixed HeLa cells labelling GSK3 alpha (phospho S21) with ab131112 at 1/100 dilution.



Immunohistochemistry (Formalin/PFA-fixed paraffin-embedded sections) - Anti-GSK3 alpha (phospho S21) antibody (ab131112)

Immunohistochemical analysis of paraffin-embedded Human breast carcinoma cells labelling GSK3 alpha (phospho S21) with ab131112 at 1/50 dilution. The image on the right is treated with blocking peptide.

Please note: All products are "FOR RESEARCH USE ONLY. NOT FOR USE IN DIAGNOSTIC PROCEDURES"

Our Abpromise to you: Quality guaranteed and expert technical support

- Replacement or refund for products not performing as stated on the datasheet
- Valid for 12 months from date of delivery
- Response to your inquiry within 24 hours
- We provide support in Chinese, English, French, German, Japanese and Spanish
- Extensive multi-media technical resources to help you
- We investigate all quality concerns to ensure our products perform to the highest standards

If the product does not perform as described on this datasheet, we will offer a refund or replacement. For full details of the Abpromise, please visit <https://www.abcam.com/abpromise> or contact our technical team.

Terms and conditions

- Guarantee only valid for products bought direct from Abcam or one of our authorized distributors