

## Product datasheet

# Anti-GSK3 beta antibody ab131356

[23 References](#)   [3 Images](#)

### Overview

---

<b>Product name</b>	Anti-GSK3 beta antibody
<b>Description</b>	Rabbit polyclonal to GSK3 beta
<b>Host species</b>	Rabbit
<b>Tested applications</b>	<b>Suitable for:</b> WB, IHC-P, ICC/IF
<b>Species reactivity</b>	<b>Reacts with:</b> Mouse, Rat, Human
<b>Immunogen</b>	Synthetic peptide conjugated to KLH, surrounding amino acids 7-11 (TTSFA) of Human GSK3 beta (NP_001139628.1). <div style="text-align: right;"> <a href="#">Run BLAST with</a>   <a href="#">Run BLAST with</a> </div>
<b>Positive control</b>	A2780 and HT29 cell extracts; HeLa cells; Human breast carcinoma tissue
<b>General notes</b>	<p>The Life Science industry has been in the grips of a reproducibility crisis for a number of years. Abcam is leading the way in addressing this with our range of recombinant monoclonal antibodies and knockout edited cell lines for gold-standard validation. Please check that this product meets your needs before purchasing.</p> <p>If you have any questions, special requirements or concerns, please send us an inquiry and/or contact our Support team ahead of purchase. Recommended alternatives for this product can be found below, along with publications, customer reviews and Q&amp;As</p>

### Properties

---

<b>Form</b>	Liquid
<b>Storage instructions</b>	Shipped at 4°C. Store at -20°C. Stable for 12 months at -20°C.
<b>Storage buffer</b>	pH: 7.40 Preservative: 0.02% Sodium azide Constituents: 49% PBS, 50% Glycerol (glycerin, glycerine), 0.88% Sodium chloride  PBS is without Mg <sup>2+</sup> and Ca <sup>2+</sup>
<b>Purity</b>	Immunogen affinity purified
<b>Purification notes</b>	ab131356 is purified by affinity chromatography using epitope specific peptide.
<b>Clonality</b>	Polyclonal
<b>Isotype</b>	IgG

## Applications

---

**The Abpromise guarantee** Our [Abpromise guarantee](#) covers the use of ab131356 in the following tested applications. The application notes include recommended starting dilutions; optimal dilutions/concentrations should be determined by the end user.

Application	Abreviews	Notes
WB		1/500 - 1/1000. Predicted molecular weight: 48 kDa.
IHC-P		1/50 - 1/100.
ICC/IF		1/100 - 1/200.

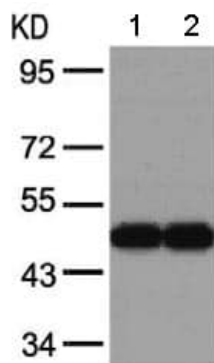
## Target

---

<b>Function</b>	Participates in the Wnt signaling pathway. Implicated in the hormonal control of several regulatory proteins including glycogen synthase, MYB and the transcription factor JUN. Phosphorylates JUN at sites proximal to its DNA-binding domain, thereby reducing its affinity for DNA. Phosphorylates MUC1 in breast cancer cells, and decreases the interaction of MUC1 with CTNNB1/beta-catenin. Phosphorylates CTNNB1/beta-catenin. Phosphorylates SNAI1. Plays an important role in ERBB2-dependent stabilization of microtubules at the cell cortex. Prevents the phosphorylation of APC and CLASP2, allowing its association with the cell membrane. In turn, membrane-bound APC allows the localization of MACF1 to the cell membrane, which is required for microtubule capture and stabilization. Phosphorylates MACF1 and this phosphorylation inhibits the binding of MACF1 to microtubules which is critical for its role in bulge stem cell migration and skin wound repair.
<b>Tissue specificity</b>	Expressed in testis, thymus, prostate and ovary and weakly expressed in lung, brain and kidney.
<b>Sequence similarities</b>	Belongs to the protein kinase superfamily. CMGC Ser/Thr protein kinase family. GSK-3 subfamily. Contains 1 protein kinase domain.
<b>Post-translational modifications</b>	Phosphorylated by AKT1 and ILK1. Activated by phosphorylation at Tyr-216.
<b>Cellular localization</b>	Cytoplasm. Nucleus. Cell membrane. The phosphorylated form shows localization to cytoplasm and cell membrane. The MEMO1-RHOA-DIAPH1 signaling pathway controls localization of the phosphorylated form to the cell membrane.

## Images

---



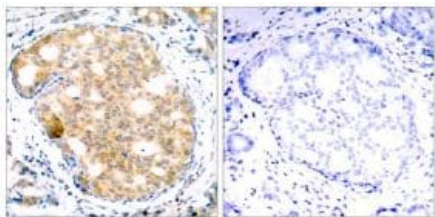
Western blot - Anti-GSK3 beta antibody (ab131356)

**All lanes :** Anti-GSK3 beta antibody (ab131356) at 1/500 dilution

**Lane 1 :** A2780 cell extract

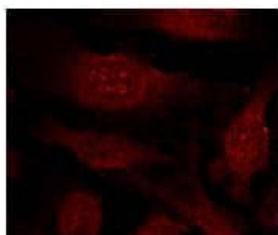
**Lane 2 :** HT29 cell extract

**Predicted band size:** 48 kDa



Immunohistochemistry (Formalin/PFA-fixed paraffin-embedded sections) - Anti-GSK3 beta antibody (ab131356)

Immunohistochemical analysis of paraffin embedded Human breast carcinoma tissue labelling GSK3 beta with ab131356 at a dilution of 1/50. Picture on the right was preincubated with blocking peptide.



Immunocytochemistry/ Immunofluorescence - Anti-GSK3 beta antibody (ab131356)

Immunofluorescence of methanol-fixed HeLa cells staining GSK3 beta with ab131356 at a dilution of 1/100.

**Please note:** All products are "FOR RESEARCH USE ONLY. NOT FOR USE IN DIAGNOSTIC PROCEDURES"

**Our Abpromise to you: Quality guaranteed and expert technical support**

- Replacement or refund for products not performing as stated on the datasheet
- Valid for 12 months from date of delivery
- Response to your inquiry within 24 hours
  
- We provide support in Chinese, English, French, German, Japanese and Spanish
- Extensive multi-media technical resources to help you
- We investigate all quality concerns to ensure our products perform to the highest standards

If the product does not perform as described on this datasheet, we will offer a refund or replacement. For full details of the Abpromise, please visit <https://www.abcam.com/abpromise> or contact our technical team.

### **Terms and conditions**

---

- Guarantee only valid for products bought direct from Abcam or one of our authorized distributors