


Product datasheet

Anti-GST3 / GST pi antibody - N-terminal ab230419

3 Images

Overview

---

<b>Product name</b>	Anti-GST3 / GST pi antibody - N-terminal
<b>Description</b>	Rabbit polyclonal to GST3 / GST pi - N-terminal
<b>Host species</b>	Rabbit
<b>Tested applications</b>	<b>Suitable for:</b> IHC-P, ICC/IF, WB
<b>Species reactivity</b>	<b>Reacts with:</b> Human <b>Predicted to work with:</b> Mouse, Rat, Cow, Monkey 
<b>Immunogen</b>	Synthetic peptide corresponding to Human GST3/ GST pi (N terminal). (Carrier-protein conjugated). Database link: <a href="#">P09211</a>
<b>Positive control</b>	IHC-P: Human liver tissue. ICC/IF: HeLa cells. WB: A431 whole cell lysate.
<b>General notes</b>	<p>Reproducibility is key to advancing scientific discovery and accelerating scientists' next breakthrough.</p> <p>Abcam is leading the way with our range of recombinant antibodies, knockout-validated antibodies and knockout cell lines, all of which support improved reproducibility.</p> <p>We are also planning to innovate the way in which we present recommended applications and species on our product datasheets, so that only applications &amp; species that have been tested in our own labs, our suppliers or by selected trusted collaborators are covered by our Abpromise™ guarantee.</p> <p>In preparation for this, we have started to update the applications &amp; species that this product is Abpromise guaranteed for.</p> <p>We are also updating the applications &amp; species that this product has been “predicted to work with,” however this information is not covered by our Abpromise guarantee.</p> <p>Applications &amp; species from publications and Abreviews that have not been tested in our own labs or in those of our suppliers are not covered by the Abpromise guarantee.</p> <p>Please check that this product meets your needs before purchasing. If you have any questions, special requirements or concerns, please send us an inquiry and/or contact our Support team ahead of purchase. Recommended alternatives for this product can be found below, as well as customer reviews and Q&amp;As.</p>

Properties

---

<b>Form</b>	Liquid
<b>Storage instructions</b>	Shipped at 4°C. Store at +4°C short term (1-2 weeks). Upon delivery aliquot. Store at -20°C long term. Avoid freeze / thaw cycle.
<b>Storage buffer</b>	pH: 7.00 Preservative: 0.01% Thimerosal (merthiolate) Constituents: PBS, 1% BSA, 20% Glycerol
<b>Purity</b>	Immunogen affinity purified
<b>Clonality</b>	Polyclonal
<b>Isotype</b>	IgG

## Applications

Our [Abpromise guarantee](#) covers the use of **ab230419** in the following tested applications.

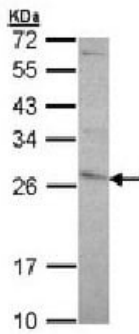
The application notes include recommended starting dilutions; optimal dilutions/concentrations should be determined by the end user.

Application	Abreviews	Notes
IHC-P		Use a concentration of 5 µg/ml. Perform heat mediated antigen retrieval before commencing with IHC staining protocol. Suggested antigen retrieval using heat mediated 10 mM Citrate buffer (pH 6.0) or Tris-EDTA buffer (pH 8.0).
ICC/IF		1/100 - 1/1000.
WB		1/1000 - 1/10000. Predicted molecular weight: 23 kDa.

## Target

<b>Function</b>	Conjugation of reduced glutathione to a wide number of exogenous and endogenous hydrophobic electrophiles.
<b>Sequence similarities</b>	Belongs to the GST superfamily. Pi family. Contains 1 GST C-terminal domain. Contains 1 GST N-terminal domain.

## Images

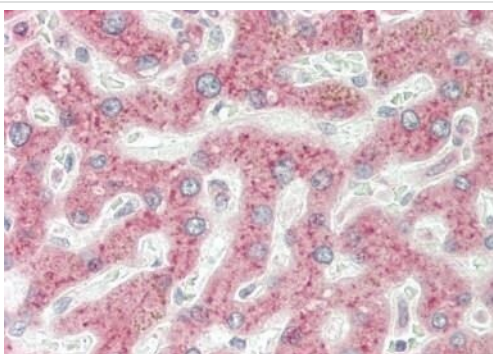


Western blot - Anti-GST3 / GST pi antibody - N-terminal (ab230419)

Anti-GST3 / GST pi antibody - N-terminal (ab230419) at 1/5000 dilution + A431 (human epidermoid carcinoma cell line) whole cell lysate at 30  $\mu$ g

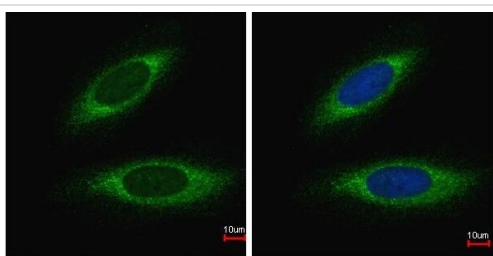
**Predicted band size:** 23 kDa

12% SDS-PAGE gel.



Immunohistochemistry (Formalin/PFA-fixed paraffin-embedded sections) - Anti-GST3 / GST pi antibody - N-terminal (ab230419)

Formalin-fixed, paraffin-embedded human liver tissue stained for GST3 / GST pi using ab230419 at 5 $\mu$ g/ml in immunohistochemical analysis.



Immunocytochemistry/ Immunofluorescence - Anti-GST3 / GST pi antibody - N-terminal (ab230419)

Paraformaldehyde-fixed HeLa (human epithelial cell line from cervix adenocarcinoma) cells stained for GST3 / GST pi (green) using ab230419 at 1/200 dilution in ICC/IF (left), and merged with DNA probe (right).

**Please note:** All products are "FOR RESEARCH USE ONLY. NOT FOR USE IN DIAGNOSTIC PROCEDURES"

### **Our Abpromise to you: Quality guaranteed and expert technical support**

---

- Replacement or refund for products not performing as stated on the datasheet
- Valid for 12 months from date of delivery
- Response to your inquiry within 24 hours
- We provide support in Chinese, English, French, German, Japanese and Spanish
- Extensive multi-media technical resources to help you
- We investigate all quality concerns to ensure our products perform to the highest standards

If the product does not perform as described on this datasheet, we will offer a refund or replacement. For full details of the Abpromise, please visit <https://www.abcam.com/abpromise> or contact our technical team.

### **Terms and conditions**

---

- Guarantee only valid for products bought direct from Abcam or one of our authorized distributors