


Product datasheet

Anti-GSTM1 + GSTM2 antibody ab27489

3 References 1 Image

Overview

Product name	Anti-GSTM1 + GSTM2 antibody
Description	Goat polyclonal to GSTM1 + GSTM2
Host species	Goat
Specificity	This antibody is expected to recognise both reported variants of human GSTM1 protein (NP_000552; NP_666533) and GSTM2 protein (NP_000848).
Tested applications	Suitable for: ELISA, WB
Species reactivity	Reacts with: Human Predicted to work with: Chimpanzee, Cynomolgus monkey 
Immunogen	Synthetic peptide: CVFSKMAVWGNIK from the C Terminus of the protein (Human). Run BLAST with Run BLAST with
Positive control	Human liver and lung lysates for Western blot.

Properties

Form	Liquid
Storage instructions	Shipped at 4°C. Upon delivery aliquot and store at -20°C. Avoid freeze / thaw cycles.
Storage buffer	Preservative: 0.02% Sodium Azide Constituents: 0.5% BSA, 5mg/ml Tris, pH 7.3
Purity	Immunogen affinity purified
Purification notes	This antibody purified from goat serum by ammonium sulphate precipitation followed by antigen affinity chromatography using the immunizing peptide.
Clonality	Polyclonal
Isotype	IgG

Applications

Our [Abpromise guarantee](#) covers the use of **ab27489** in the following tested applications.

The application notes include recommended starting dilutions; optimal dilutions/concentrations should be determined by the end user.

Application	Abreviews	Notes
ELISA		1/1000.
WB		Use a concentration of 1 - 3 µg/ml. Detects a band of approximately 26 kDa (predicted molecular weight: 26 kDa).

Target

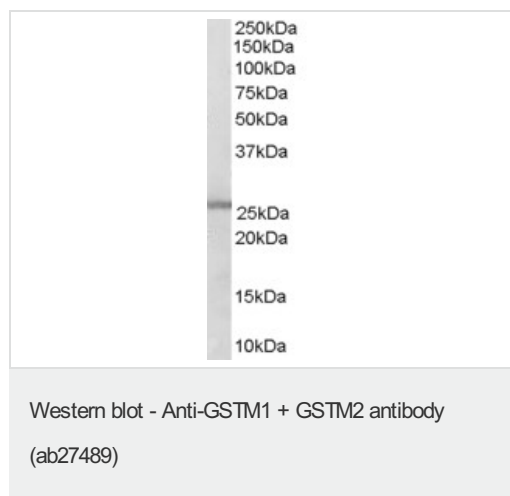
Relevance

Glutathione S transferases are encoded by two distinct supergene families and a total of eight distinct classes of the soluble cytoplasmic mammalian glutathione S transferases have been identified: alpha, kappa, mu, omega, pi, sigma, theta and zeta. The mu class of these enzymes, to which GSTM1 and 2 belong, functions in the detoxification of electrophilic compounds by conjugation with glutathione. The genes encoding the mu class of enzymes are known to be highly polymorphic. These genetic variations can change an individual's susceptibility to carcinogens and toxins as well as affect the toxicity and efficacy of certain drugs and null mutations of this gene have been linked with an increase in a number of cancers.

Cellular localization

Cytoplasmic

Images



Anti-GSTM1 + GSTM2 antibody (ab27489) at 0.3 µg/ml + human lung lysate (35µg protein in RIPA buffer).

Predicted band size: 26 kDa

Observed band size: 26 kDa

Primary incubation was 1 hour. Detected by chemiluminescence.

Please note: All products are "FOR RESEARCH USE ONLY AND ARE NOT INTENDED FOR DIAGNOSTIC OR THERAPEUTIC USE"

Our Promise to you: Quality guaranteed and expert technical support

- Replacement or refund for products not performing as stated on the datasheet
- Valid for 12 months from date of delivery
- Response to your inquiry within 24 hours
- We provide support in Chinese, English, French, German, Japanese and Spanish
- Extensive multi-media technical resources to help you

- We investigate all quality concerns to ensure our products perform to the highest standards

If the product does not perform as described on this datasheet, we will offer a refund or replacement. For full details of the Abpromise, please visit <https://www.abcam.com/abpromise> or contact our technical team.

Terms and conditions

- Guarantee only valid for products bought direct from Abcam or one of our authorized distributors