


Product datasheet

Anti-GTF3C4 antibody ab229113

3 Images

Overview

Product name	Anti-GTF3C4 antibody
Description	Rabbit polyclonal to GTF3C4
Host species	Rabbit
Tested applications	Suitable for: IHC-P, WB, ICC/IF
Species reactivity	Reacts with: Human Predicted to work with: Mouse, Rat, Cow, Rhesus monkey 
Immunogen	Recombinant fragment within Human GTF3C4 (internal sequence). The exact sequence is proprietary. Database link: Q9UKN8
Positive control	WB: U-87 MG whole cell lysate. IHC-P: Human breast cancer tissue. ICC/IF: HeLa cells.

Properties

Form	Liquid
Storage instructions	Shipped at 4°C. Store at +4°C short term (1-2 weeks). Upon delivery aliquot. Store at -20°C long term. Avoid freeze / thaw cycle.
Storage buffer	pH: 7.00 Preservative: 0.01% Thimerosal (merthiolate) Constituents: PBS, 1% BSA, 20% Glycerol
Purity	Immunogen affinity purified
Clonality	Polyclonal
Isotype	IgG

Applications

Our [Abpromise guarantee](#) covers the use of **ab229113** in the following tested applications.

The application notes include recommended starting dilutions; optimal dilutions/concentrations should be determined by the end user.

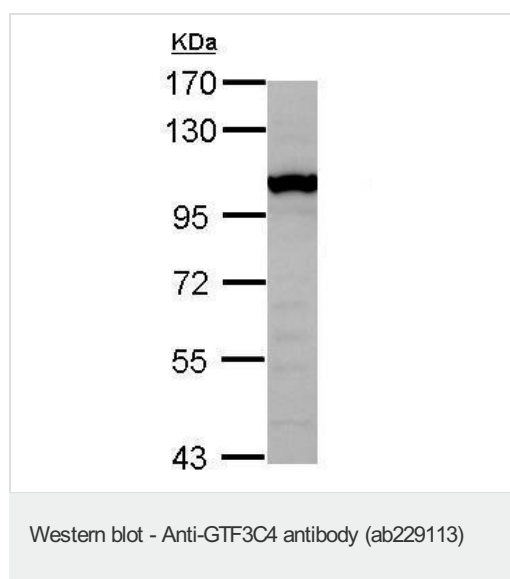
Application	Abreviews	Notes
IHC-P		1/100 - 1/1000.

Application	Abreviews	Notes
WB		1/500 - 1/3000. Predicted molecular weight: 92 kDa.
ICC/IF		1/100 - 1/1000.

Target

Function	Essential for RNA polymerase III to make a number of small nuclear and cytoplasmic RNAs, including 5S RNA, tRNA, and adenovirus-associated (VA) RNA of both cellular and viral origin. Has histone acetyltransferase activity (HAT) with unique specificity for free and nucleosomal H3. May cooperate with GTF3C5 in facilitating the recruitment of TFIIIB and RNA polymerase through direct interactions with BRF1, POLR3C and POLR3F. May be localized close to the A box.
Sequence similarities	Belongs to the TFIIIC subunit 4 family.
Cellular localization	Nucleus.

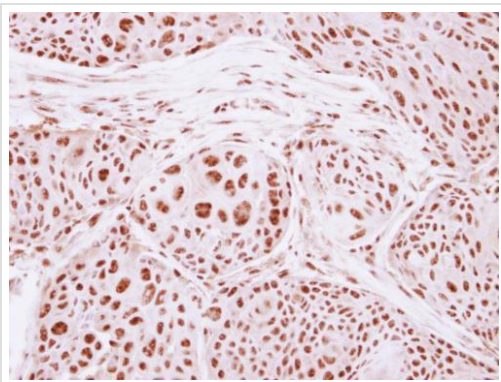
Images



Anti-GTF3C4 antibody (ab229113) at 1/1000 dilution + U-87 MG (human glioblastoma-astrocytoma epithelial cell line) whole cell lysate at 30 µg

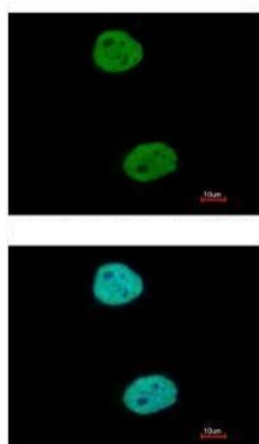
Predicted band size: 92 kDa

7.5% SDS-PAGE gel.



Immunohistochemistry (Formalin/PFA-fixed paraffin-embedded sections) - Anti-GTF3C4 antibody (ab229113)

Paraffin-embedded human breast cancer tissue stained for GTF3C4 using ab229113 at 1/250 dilution in immunohistochemical analysis.



Immunocytochemistry/ Immunofluorescence - Anti-GTF3C4 antibody (ab229113)

Paraformaldehyde-fixed HeLa (human epithelial cell line from cervix adenocarcinoma) cells stained for GTF3C4 (green) using ab229113 at 1/500 dilution in ICC/IF.

Nuclear counterstain: Hoechst 33342 (blue).

Please note: All products are "FOR RESEARCH USE ONLY. NOT FOR USE IN DIAGNOSTIC PROCEDURES"

Our Abpromise to you: Quality guaranteed and expert technical support

- Replacement or refund for products not performing as stated on the datasheet
- Valid for 12 months from date of delivery
- Response to your inquiry within 24 hours
- We provide support in Chinese, English, French, German, Japanese and Spanish
- Extensive multi-media technical resources to help you
- We investigate all quality concerns to ensure our products perform to the highest standards

If the product does not perform as described on this datasheet, we will offer a refund or replacement. For full details of the Abpromise, please visit <https://www.abcam.com/abpromise> or contact our technical team.

Terms and conditions

-
- Guarantee only valid for products bought direct from Abcam or one of our authorized distributors