

Product datasheet

Anti-GTF3C4 antibody - N-terminal ab170386

2 Images

Overview

| | |
|----------------------------|---|
| Product name | Anti-GTF3C4 antibody - N-terminal |
| Description | Rabbit polyclonal to GTF3C4 - N-terminal |
| Host species | Rabbit |
| Tested applications | Suitable for: WB, Flow Cyt |
| Species reactivity | Reacts with: Mouse, Human |
| Immunogen | Synthetic peptide within Human GTF3C4 aa 221-252 (N terminal) conjugated to Keyhole Limpet Haemocyanin (KLH). The exact sequence is proprietary. Database link: Q9UKN8 |
| Positive control | HeLa cells; NIH-3T3 cell lysate. |

Properties

| | |
|-----------------------------|---|
| Form | Liquid |
| Storage instructions | Shipped at 4°C. Store at +4°C short term (1-2 weeks). Upon delivery aliquot. Store at -20°C long term. Avoid freeze / thaw cycle. |
| Storage buffer | Preservative: 0.09% Sodium azide Constituent: 99% PBS |
| Purity | Immunogen affinity purified |
| Purification notes | ab170386 is purified through a protein A column, followed by peptide affinity purification. |
| Clonality | Polyclonal |
| Isotype | IgG |

Applications

Our [Abpromise guarantee](#) covers the use of **ab170386** in the following tested applications.

The application notes include recommended starting dilutions; optimal dilutions/concentrations should be determined by the end user.

| Application | Abreviews | Notes |
|-------------|-----------|--|
| WB | | 1/100 - 1/500. Predicted molecular weight: 92 kDa. |

| Application | Abreviews | Notes |
|-------------|-----------|-------|
|-------------|-----------|-------|

Flow Cyt

1/10 - 1/50.

[ab171870](#) - Rabbit polyclonal IgG, is suitable for use as an isotype control with this antibody.

Target

Function

Essential for RNA polymerase III to make a number of small nuclear and cytoplasmic RNAs, including 5S RNA, tRNA, and adenovirus-associated (VA) RNA of both cellular and viral origin. Has histone acetyltransferase activity (HAT) with unique specificity for free and nucleosomal H3. May cooperate with GTF3C5 in facilitating the recruitment of TFIIIB and RNA polymerase through direct interactions with BRF1, POLR3C and POLR3F. May be localized close to the A box.

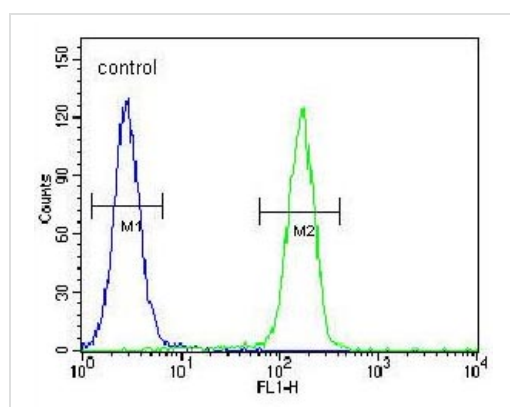
Sequence similarities

Belongs to the TFIIIC subunit 4 family.

Cellular localization

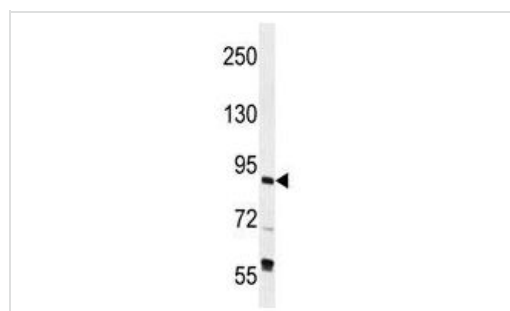
Nucleus.

Images



Flow Cytometry - Anti-GTF3C4 antibody - N-terminal (ab170386)

Flow cytometric analysis of HeLa cells labeling GTF3C4 with ab170386 at 1/10 dilution (right histogram) compared to negative control cells (left histogram). FITC-conjugated goat anti-rabbit secondary antibodies were used for the analysis.



Western blot - Anti-GTF3C4 antibody - N-terminal (ab170386)

Anti-GTF3C4 antibody - N-terminal (ab170386) at 1/100 dilution + NIH-3T3 cell lysate at 35 µg

Predicted band size: 92 kDa

Please note: All products are "FOR RESEARCH USE ONLY AND ARE NOT INTENDED FOR DIAGNOSTIC OR THERAPEUTIC USE"

Our Abpromise to you: Quality guaranteed and expert technical support

- Replacement or refund for products not performing as stated on the datasheet
- Valid for 12 months from date of delivery
- Response to your inquiry within 24 hours

- We provide support in Chinese, English, French, German, Japanese and Spanish
- Extensive multi-media technical resources to help you
- We investigate all quality concerns to ensure our products perform to the highest standards

If the product does not perform as described on this datasheet, we will offer a refund or replacement. For full details of the Abpromise, please visit <https://www.abcam.com/abpromise> or contact our technical team.

Terms and conditions

- Guarantee only valid for products bought direct from Abcam or one of our authorized distributors