

Product datasheet

Anti-GW182 antibody [4B6] - P/GW Body Marker ab70522

★★★★★ 1 Abreviews 13 References 2 Images

Overview

Product name	Anti-GW182 antibody [4B6] - P/GW Body Marker
Description	Mouse monoclonal [4B6] to GW182 - P/GW Body Marker
Host species	Mouse
Tested applications	Suitable for: ICC/IF
Species reactivity	Reacts with: Human
Immunogen	Recombinant full length protein corresponding to GW182.
Positive control	HEp-2000 cells
General notes	This antibody clone is manufactured by Abcam. If you require this antibody in a particular buffer formulation or a particular conjugate for your experiments, please contact orders@abcam.com or you can find further information here .

Properties

Form	Liquid
Storage instructions	Shipped at 4°C. Store at +4°C short term (1-2 weeks). Upon delivery aliquot. Store at -20°C or -80°C. Avoid freeze / thaw cycle.
Storage buffer	pH: 7.40 Preservative: 0.02% Sodium azide Constituents: PBS, 6.97% L-Arginine
Purity	IgG fraction
Clonality	Monoclonal
Clone number	4B6
Isotype	IgG1
Light chain type	kappa

Applications

Our [Abpromise guarantee](#) covers the use of **ab70522** in the following tested applications.

The application notes include recommended starting dilutions; optimal dilutions/concentrations should be determined by the end user.

Application	Abreviews	Notes
ICC/IF	★★★★☆	1/100.

Target

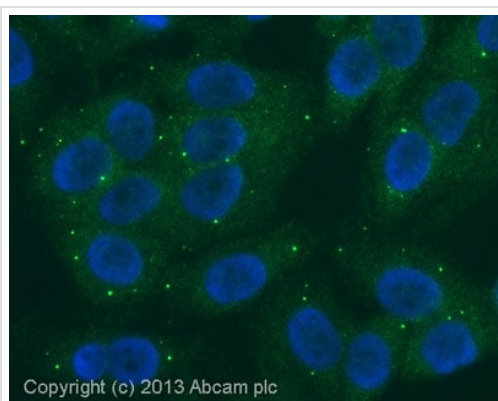
Function Plays a role in RNA-mediated gene silencing by both micro-RNAs (miRNAs) and short interfering RNAs (siRNAs). Required for miRNA-dependent repression of translation and for siRNA-dependent endonucleolytic cleavage of complementary mRNAs by argonaute family proteins.

Tissue specificity Ubiquitous.

Sequence similarities Belongs to the GW182 family.
Contains 1 RRM (RNA recognition motif) domain.

Cellular localization Cytoplasm > P-body. Mammalian P-bodies are also known as GW bodies.

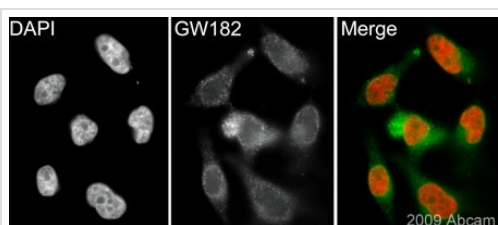
Images



ab70522 staining GW182 in pre-fixed HEp-2000 cells. ab70522 was used at 1/100 dilution and incubated overnight at 4°C. An Alexa Fluor® 488-conjugated anti-mouse IgG was used as the secondary antibody.

Immunocytochemistry/ Immunofluorescence - Anti-GW182 antibody [4B6] - P/GW Body Marker (ab70522)

This image is courtesy of Mèifeng Zhang, University of Calgary, Canada



ab70522 (1/200) staining GW182 in asynchronous HeLa cells (green). Cells were fixed in paraformaldehyde, permeabilised with Triton X100/PBS and counterstained with DAPI in order to highlight the nucleus (red). Please refer to abreview for further experimental details.

Immunocytochemistry/ Immunofluorescence - Anti-GW182 antibody [4B6] - P/GW Body Marker (ab70522)

This image is courtesy of an Abreview submitted by Dr Kirk McManus

Please note: All products are "FOR RESEARCH USE ONLY. NOT FOR USE IN DIAGNOSTIC PROCEDURES"

Our Abpromise to you: Quality guaranteed and expert technical support

- Replacement or refund for products not performing as stated on the datasheet
- Valid for 12 months from date of delivery
- Response to your inquiry within 24 hours
- We provide support in Chinese, English, French, German, Japanese and Spanish
- Extensive multi-media technical resources to help you
- We investigate all quality concerns to ensure our products perform to the highest standards

If the product does not perform as described on this datasheet, we will offer a refund or replacement. For full details of the Abpromise, please visit <https://www.abcam.com/abpromise> or contact our technical team.

Terms and conditions

- Guarantee only valid for products bought direct from Abcam or one of our authorized distributors