

Product datasheet

Anti-HA tag antibody [4C12] ab1424

★★★★☆ 12 Abreviews 25 References 4 Images

Overview

| | |
|----------------------------|---|
| Product name | Anti-HA tag antibody [4C12] |
| Description | Mouse monoclonal [4C12] to HA tag |
| Host species | Mouse |
| Specificity | The antibody detects HA-tag fused to the C-terminus or N-terminus of targeted proteins in transfected cells. The antibody works in ChIP but less well than ab9110 (see ChIP data). |
| Tested applications | Suitable for: ELISA, ICC/IF, ChIP, IP, WB |
| Species reactivity | Reacts with: Species independent |
| Positive control | WB: Rab6-HA transfected HEK-293T whole cell lysate. IP: Rab6-HA transfected HEK-293T whole cell lysate. ICC/IF: Baby hamster kidney cell expressing HA-tag CFTR protein. ChIP: Xenopus laevis oocytes injected with mRNA for HA-tagged human BORIS. |

Properties

| | |
|-----------------------------|--|
| Form | Liquid |
| Storage instructions | Shipped at 4°C. Store at +4°C short term (1-2 weeks). Upon delivery aliquot. Store at -20°C or -80°C. Avoid freeze / thaw cycle. |
| Storage buffer | PBS pH7.2 with 50% glycerol, 1% BSA and 0.02% sodium azide |
| Clonality | Monoclonal |
| Clone number | 4C12 |
| Isotype | IgG1 |

Applications

Our [Abpromise guarantee](#) covers the use of **ab1424** in the following tested applications.

The application notes include recommended starting dilutions; optimal dilutions/concentrations should be determined by the end user.

| Application | Abreviews | Notes |
|-------------|-----------|----------------------------------|
| ELISA | | 1/1000. PubMed: 17167031 |
| ICC/IF | ★★★★☆ | Use a concentration of 10 µg/ml. |

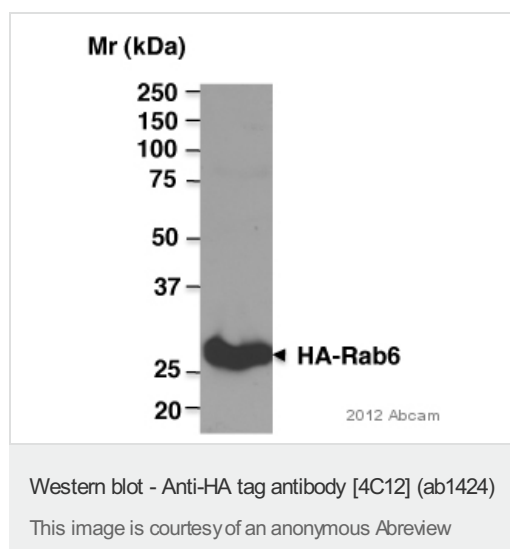
| Application | Abreviews | Notes |
|-------------|-----------|---|
| ChIP | | Use a concentration of 3 µg/ml. Use 3 µg per 25 µg chromatin (see figure legend). |
| IP | ★★★★☆ | Use a concentration of 10 µg/ml. |
| WB | ★★★★☆ | Use a concentration of 1 µg/ml. |

Target

Relevance

Human influenza hemagglutinin (HA) is a surface glycoprotein required for the infectivity of the human virus. The HA tag is derived from the HA molecule corresponding to amino acids 98-106 has been extensively used as a general epitope tag in expression vectors. Many recombinant proteins have been engineered to express the HA tag, which does not appear to interfere with the bioactivity or the biodistribution of the recombinant protein. This tag facilitates the detection, isolation, and purification of the proteins.

Images



Anti-HA tag antibody [4C12] (ab1424) at 1/1000 dilution + HEK293T whole cell lysate over-expressing HA-tagged Rab6 at 20 µg

Secondary

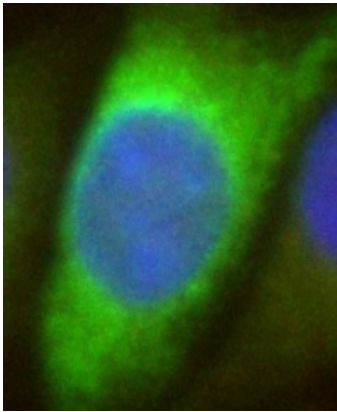
HRP-conjugated goat anti-mouse polyclonal IgG at 1/5000 dilution

Developed using the ECL technique.

Performed under reducing conditions.

Exposure time: 5 seconds

Blocked with 5% milk for 30 min at 25°C

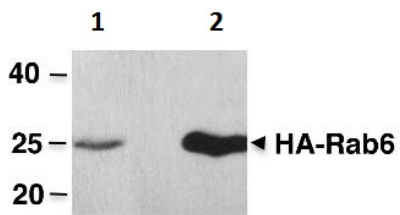


This picture shows baby hamster kidney cell expressing HA-tag CFTR protein. This type of cells were grown on coverslip and immunofluorescence was performed. Dilution of 1:200 was used and incubated for 2hrs with antibody.

Immunocytochemistry/ Immunofluorescence - Anti-HA tag antibody [4C12] (ab1424)

This image was kindly supplied as part of the review submitted by one of our customers.

2013 Abcam



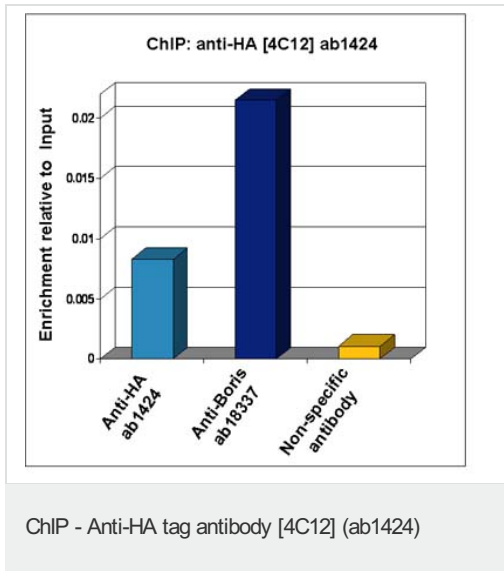
Recombinant HA-tagged Rab6 was immunoprecipitated from 1 mg transfected HEK-293T (human epithelial cell line from embryonic kidney transformed with large T antigen) whole cell extract with 2 μ L ab1424.

Lane 1: Rab6-HA transfected HEK-293T whole cell extract (Input)

Lane 2: ab1424 IP in Rab6-HA transfected HEK-293T whole cell extract.

Immunoprecipitation - Anti-HA tag antibody [4C12] (ab1424)

Data courtesy of an anonymous AbReview



Xenopus laevis oocytes were injected with mRNA for HA-tagged human BORIS. Chromatin was prepared according to the Abcam X-ChIP protocol. Oocytes were fixed with formaldehyde for 10min. The ChIP was performed with 25µg of chromatin, 3µg of ab1424 (anti-HA, light blue) and 3µg of ab18337 (anti-BORIS, dark blue), and 20µl of Protein A/G sepharose beads. A non-specific antibody was used as a control (yellow). The immunoprecipitated DNA was quantified by real time PCR (Taqman approach).

Please note: All products are "FOR RESEARCH USE ONLY AND ARE NOT INTENDED FOR DIAGNOSTIC OR THERAPEUTIC USE"

Our Abpromise to you: Quality guaranteed and expert technical support

- Replacement or refund for products not performing as stated on the datasheet
- Valid for 12 months from date of delivery
- Response to your inquiry within 24 hours
- We provide support in Chinese, English, French, German, Japanese and Spanish
- Extensive multi-media technical resources to help you
- We investigate all quality concerns to ensure our products perform to the highest standards

If the product does not perform as described on this datasheet, we will offer a refund or replacement. For full details of the Abpromise, please visit <https://www.abcam.com/abpromise> or contact our technical team.

Terms and conditions

- Guarantee only valid for products bought direct from Abcam or one of our authorized distributors