

Product datasheet

Anti-HA tag antibody ab13834

★★★★★ 3 Abreviews 7 References 1 Image

Overview

Product name	Anti-HA tag antibody
Description	Rabbit polyclonal to HA tag
Host species	Rabbit
Tested applications	Suitable for: WB
Species reactivity	Reacts with: Species independent
Immunogen	Synthetic peptide within HA tag conjugated to keyhole limpet haemocyanin. The exact sequence is proprietary. (Peptide available as ab13835)
Positive control	WB: HEK-293 (Human) Whole Cell Lysate - expressing HA tag protein.
General notes	<p>The Life Science industry has been in the grips of a reproducibility crisis for a number of years. Abcam is leading the way in addressing this with our range of recombinant monoclonal antibodies and knockout edited cell lines for gold-standard validation. Please check that this product meets your needs before purchasing.</p> <p>If you have any questions, special requirements or concerns, please send us an inquiry and/or contact our Support team ahead of purchase. Recommended alternatives for this product can be found below, along with publications, customer reviews and Q&As</p>

Properties

Form	Liquid
Storage instructions	Shipped at 4°C. Store at +4°C short term (1-2 weeks). Upon delivery aliquot. Store at -20°C or -80°C. Avoid freeze / thaw cycle.
Storage buffer	<p>pH: 7.40</p> <p>Preservative: 0.02% Sodium azide</p> <p>Constituent: PBS</p> <p>Batches of this product that have a concentration < 1mg/ml may have BSA added as a stabilising agent. If you would like information about the formulation of a specific lot, please contact our scientific support team who will be happy to help.</p>
Purity	Immunogen affinity purified
Clonality	Polyclonal

Isotype

IgG

Applications

The Abpromise guarantee

Our [Abpromise guarantee](#) covers the use of ab13834 in the following tested applications.

The application notes include recommended starting dilutions; optimal dilutions/concentrations should be determined by the end user.

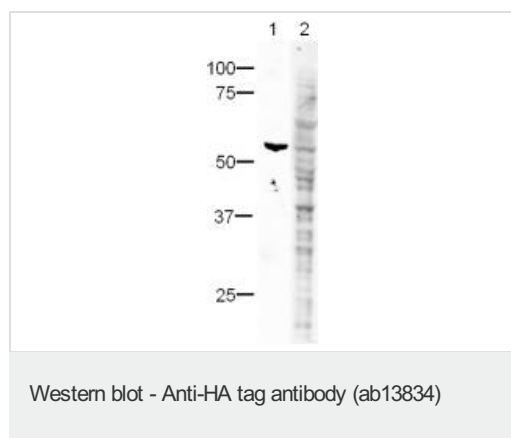
Application	Abreviews	Notes
WB	★★★★★ (2)	1/500. Can be blocked with HA tag peptide (ab13835) .

Target

Relevance

Human influenza hemagglutinin (HA) is a surface glycoprotein required for the infectivity of the human virus. The HA tag is derived from the HA molecule corresponding to amino acids 98-106 has been extensively used as a general epitope tag in expression vectors. Many recombinant proteins have been engineered to express the HA tag, which does not appear to interfere with the bioactivity or the biodistribution of the recombinant protein. This tag facilitates the detection, isolation, and purification of the proteins.

Images



All lanes : Anti-HA tag antibody (ab13834) at 1/500 dilution

Lane 1 : HEK-293 (Human) Whole Cell Lysate - expressing HA tag protein ([ab20896](#))

Lane 2 : HEK-293 (Human) Whole Cell Lysate - expressing HA tag protein ([ab20896](#)) with HA tag peptide ([ab13835](#)) at 1 µg/ml

Lysates/proteins at 10 µg per lane.

Secondary

All lanes : Alexa Fluor 680 Goat-anti-Rabbit IgG at 1/5000 dilution

Performed under reducing conditions.

Please note: All products are "FOR RESEARCH USE ONLY. NOT FOR USE IN DIAGNOSTIC PROCEDURES"

Our Abpromise to you: Quality guaranteed and expert technical support

- Replacement or refund for products not performing as stated on the datasheet
- Valid for 12 months from date of delivery
- Response to your inquiry within 24 hours

- We provide support in Chinese, English, French, German, Japanese and Spanish
- Extensive multi-media technical resources to help you
- We investigate all quality concerns to ensure our products perform to the highest standards

If the product does not perform as described on this datasheet, we will offer a refund or replacement. For full details of the Abpromise, please visit <https://www.abcam.com/abpromise> or contact our technical team.

Terms and conditions

- Guarantee only valid for products bought direct from Abcam or one of our authorized distributors