

Product datasheet

Anti-Hallen antibody ab5421

1 Image

Overview

Product name	Anti-Hallen antibody
Description	Rabbit polyclonal to Hallen
	<div style="border: 1px solid #ccc; background-color: #e6f2ff; padding: 10px; margin-top: 10px;"> <p>ⓘ This product is a fast track antibody. It has been affinity purified and shows high titre values against the immunizing peptide by ELISA. Read the terms of use »</p> </div>
Host species	Rabbit
Specificity	The expression pattern of Hallen is unknown at this time. The expected molecular weight is 73 kDa. A band of this size is seen in lanes containing Jurkat and 293 cell extract.
Species reactivity	<p>Reacts with: Human</p> <p>Predicted to work with: Mouse, Rat ⚠</p>
Immunogen	<p>Synthetic peptide:</p> <p>KSGRWLDETTYEWGC</p> <p>, corresponding to amino acids 78-91 of Human Hallen.</p> <p style="text-align: right;"> 📄 Run BLAST with 📄 Run BLAST with </p>
General notes	Hallen is a novel BRCT domain containing protein.

Properties

Form	Liquid
Storage instructions	Shipped at 4°C. Upon delivery aliquot and store at -20°C. Avoid freeze / thaw cycles.
Storage buffer	<p>pH: 7.20</p> <p>Preservative: 0.01% Sodium azide</p> <p>Constituents: 0.42% Potassium phosphate, 0.87% Sodium chloride</p>
Purity	Immunogen affinity purified
Purification notes	This is an affinity purified antibody produced by immunoaffinity chromatography using the immunizing peptide immobilized to a solid phase.
Primary antibody notes	Hallen is a novel BRCT domain containing protein.
Clonality	Polyclonal

Applications

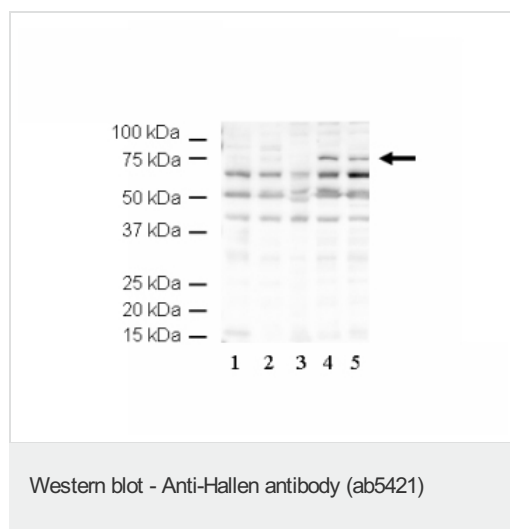
Fast track antibodies constitute a diverse group of products that have been released to accelerate your research, but are not yet fully characterized. They have all been affinity purified and show high titre values against the immunizing peptide (by ELISA).

[Fast track terms of use](#)

Application	Abreviews	Notes
WB		Use at an assay dependent concentration.
ELISA		Use at an assay dependent concentration. Tested in peptide ELISA.

Images

This Fast-Track antibody is not yet fully characterised. These images represent **inconclusive preliminary data**.



Anti-Hallen antibody (ab5421) used at a dilution of 1/500.

Lane 1: 5µg HeLa nuclear extract
Please note: All products are
 "FOR RESEARCH USE ONLY AND ARE NOT INTENDED FOR
 DIAGNOSTIC OR THERAPEUTIC USE"

Terms and conditions

- ▶ Guarantee only valid for products bought direct from Abcam or one of our authorized distributors