

Product datasheet

Anti-Haploid sperm cell-specific antigen antibody [TRA54] ab92286

5 References 1 Image

Overview

<b>Product name</b>	Anti-Haploid sperm cell-specific antigen antibody [TRA54]
<b>Description</b>	Rat monoclonal [TRA54] to Haploid sperm cell-specific antigen
<b>Host species</b>	Rat
<b>Tested applications</b>	<b>Suitable for:</b> WB
<b>Species reactivity</b>	<b>Reacts with:</b> Mouse, Rat
<b>Immunogen</b>	Adult Mouse testis.
<b>Positive control</b>	Mouse testis lysate.

Properties

<b>Form</b>	Liquid
<b>Storage instructions</b>	Shipped at 4°C. Store at +4°C short term (1-2 weeks). Upon delivery aliquot. Store at -20°C long term.
<b>Storage buffer</b>	pH: 6 Constituents: PBS, 50% Glycerol (glycerin, glycerine)
<b>Purification notes</b>	ab92286 was purified from the serum-free culture medium of the hybridoma clone TRA54 by proprietary chromatography processes under mild conditions.
<b>Clonality</b>	Monoclonal
<b>Clone number</b>	TRA54
<b>Isotype</b>	IgM

Applications

Our [Abpromise guarantee](#) covers the use of **ab92286** in the following tested applications.

The application notes include recommended starting dilutions; optimal dilutions/concentrations should be determined by the end user.

Application	Abreviews	Notes
WB		Use a concentration of 1 µg/ml.

## Target

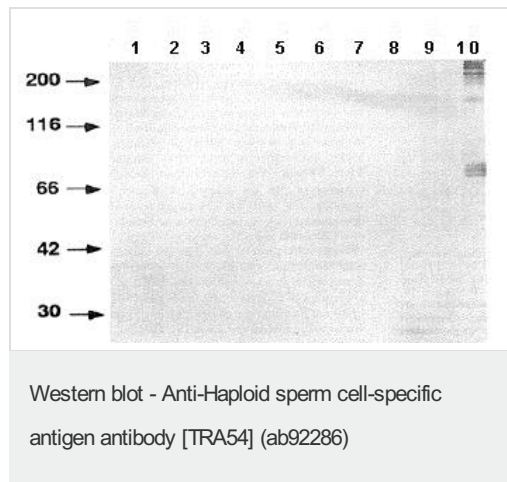
---

### Relevance

Many transcripts for proteins specifically expressed in haploid germ cells are synthesized in the spermatogenesis. A monoclonal antibody TRA54 recognizes specific organelles in germ cell cytoplasm from spermatocytes to spermatids.

## Images

---



**All lanes :** Anti-Haploid sperm cell-specific antigen antibody [TRA54] (ab92286) at 1/5000 dilution

**Lane 1 :** Mouse brain cell lysate

**Lane 2 :** Mouse Heart cell lysate

**Lane 3 :** Mouse Intestine cell lysate

**Lane 4 :** Mouse Kidney cell lysate

**Lane 5 :** Mouse Liver cell lysate

**Lane 6 :** Mouse Muscle cell lysate

**Lane 7 :** Mouse Ovary cell lysate

**Lane 8 :** Mouse Skin cell lysate

**Lane 9 :** Mouse Spleen cell lysate

**Lane 10 :** Mouse Testis cell lysate

Lysates/proteins at 100 µg per lane.

**Observed band size:** >200,190,85 kDa

[why is the actual band size different from the predicted?](#)

**Please note:** All products are "FOR RESEARCH USE ONLY. NOT FOR USE IN DIAGNOSTIC PROCEDURES"

## Our Abpromise to you: Quality guaranteed and expert technical support

---

- Replacement or refund for products not performing as stated on the datasheet
- Valid for 12 months from date of delivery
- Response to your inquiry within 24 hours
- We provide support in Chinese, English, French, German, Japanese and Spanish
- Extensive multi-media technical resources to help you
- We investigate all quality concerns to ensure our products perform to the highest standards

If the product does not perform as described on this datasheet, we will offer a refund or replacement. For full details of the Abpromise, please visit <https://www.abcam.com/abpromise> or contact our technical team.

## Terms and conditions

---

- Guarantee only valid for products bought direct from Abcam or one of our authorized distributors