




Product datasheet

Anti-HAS1 antibody ab272680

5 Images

Overview

Product name	Anti-HAS1 antibody
Description	Rabbit polyclonal to HAS1
Host species	Rabbit
Tested applications	Suitable for: ICC/IF, IHC-P
Species reactivity	<p>Reacts with: Human</p> <p>Predicted to work with: Mouse </p>
Immunogen	<p>Recombinant fragment corresponding to Human HAS1 aa 135-208. Sequence:</p> <p>DGNRAEDLYMVDMFREVFADDPATYVWDGNYHQPWE PAAAGAVGAGAYR EVEAEDPGRLAVEALVRTRRCVCV</p> <p>Database link: Q92839</p> <p style="text-align: right;">  Run BLAST with  Run BLAST with </p>
Positive control	IHC-P: Human skin tissue, prostate tissue and colon tissue. IF: LHCN-M2 cell.
General notes	<p>Reproducibility is key to advancing scientific discovery and accelerating scientists' next breakthrough.</p> <p>Abcam is leading the way with our range of recombinant antibodies, knockout-validated antibodies and knockout cell lines, all of which support improved reproducibility.</p> <p>We are also planning to innovate the way in which we present recommended applications and species on our product datasheets, so that only applications & species that have been tested in our own labs, our suppliers or by selected trusted collaborators are covered by our Abpromise™ guarantee.</p> <p>In preparation for this, we have started to update the applications & species that this product is Abpromise guaranteed for.</p> <p>We are also updating the applications & species that this product has been “predicted to work with,” however this information is not covered by our Abpromise guarantee.</p> <p>Applications & species from publications and Abreviews that have not been tested in our own labs or in those of our suppliers are not covered by the Abpromise guarantee.</p> <p>Please check that this product meets your needs before purchasing. If you have any questions, special requirements or concerns, please send us an inquiry and/or contact our Support team ahead of purchase. Recommended alternatives for this product can be found below, as well as customer reviews and Q&As.</p>

Properties

Form	Liquid
Storage instructions	Shipped at 4°C. Store at +4°C short term (1-2 weeks). Upon delivery aliquot. Store at -20°C long term. Avoid freeze / thaw cycle.
Storage buffer	pH: 7.20 Preservative: 0.02% Sodium azide Constituents: 40% Glycerol (glycerin, glycerine), PBS
Purity	Immunogen affinity purified
Clonality	Polyclonal
Isotype	IgG

Applications

Our [Abpromise guarantee](#) covers the use of **ab272680** in the following tested applications.

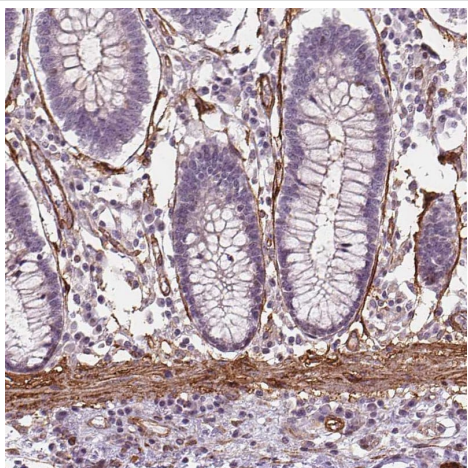
The application notes include recommended starting dilutions; optimal dilutions/concentrations should be determined by the end user.

Application	Abreviews	Notes
ICC/IF		Use a concentration of 0.25 - 2 µg/ml.
IHC-P		1/1000 - 1/2500. Perform heat mediated antigen retrieval with citrate buffer pH 6 before commencing with IHC staining protocol.

Target

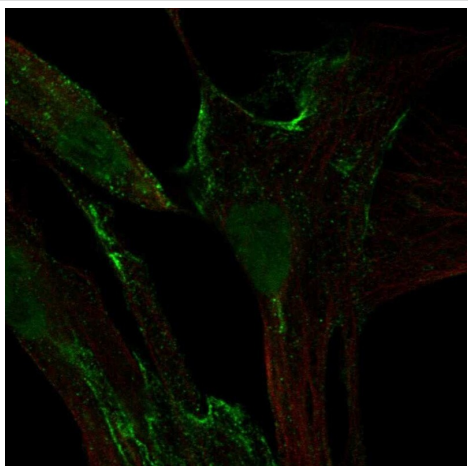
Function	Catalyzes the addition of GlcNAc or GlcUA monosaccharides to the nascent hyaluronan polymer. Therefore, it is essential to hyaluronan synthesis a major component of most extracellular matrices that has a structural role in tissues architectures and regulates cell adhesion, migration and differentiation. This is one of the isozymes catalyzing that reaction. Also able to catalyze the synthesis of chito-oligosaccharide depending on the substrate.
Tissue specificity	Widely expressed. Highly expressed in ovary followed by spleen, thymus, prostate, testes and large intestine. Weakly expressed in small intestine.
Pathway	Glycan biosynthesis; hyaluronan biosynthesis.
Sequence similarities	Belongs to the NodC/HAS family.
Cellular localization	Membrane.

Images



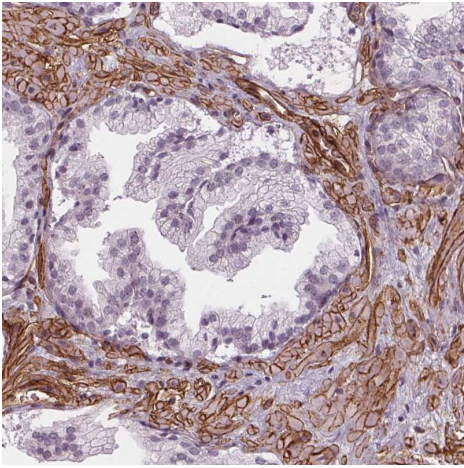
Immunohistochemistry (Formalin/PFA-fixed paraffin-embedded sections) - Anti-HAS1 antibody (ab272680)

Paraffin-embedded formalin-fixed Human colon tissue stained for HAS1 using ab272680 at 1/1000 in immunohistochemical analysis.



Immunocytochemistry/ Immunofluorescence - Anti-HAS1 antibody (ab272680)

PFA fixed, Triton X-100 permeabilized LHCN-M2 cell (human skeletal myoblasts cell line) labeling HAS1 (green) using ab272680 at 2 ug/ml in ICC/IF analysis.



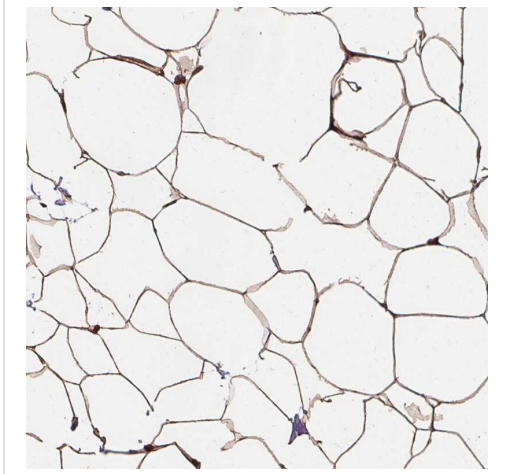
Paraffin-embedded formalin-fixed Human prostate tissue stained for HAS1 using ab272680 at 1/1000 dilution in immunohistochemical analysis.

Immunohistochemistry (Formalin/PFA-fixed paraffin-embedded sections) - Anti-HAS1 antibody (ab272680)



Paraffin-embedded formalin-fixed Human skin tissue stained for HAS1 using ab272680 at 1/1000 dilution in immunohistochemical analysis.

Immunohistochemistry (Formalin/PFA-fixed paraffin-embedded sections) - Anti-HAS1 antibody (ab272680)



Paraffin-embedded formalin-fixed Human breast tissue stained for HAS1 using ab272680 at 1/1000 dilution in immunohistochemical analysis. Shows low expression as expected.

Immunohistochemistry (Formalin/PFA-fixed paraffin-embedded sections) - Anti-HAS1 antibody (ab272680)

Please note: All products are "FOR RESEARCH USE ONLY. NOT FOR USE IN DIAGNOSTIC PROCEDURES"

Our Abpromise to you: Quality guaranteed and expert technical support

- Replacement or refund for products not performing as stated on the datasheet
- Valid for 12 months from date of delivery
- Response to your inquiry within 24 hours
- We provide support in Chinese, English, French, German, Japanese and Spanish
- Extensive multi-media technical resources to help you
- We investigate all quality concerns to ensure our products perform to the highest standards

If the product does not perform as described on this datasheet, we will offer a refund or replacement. For full details of the Abpromise, please visit <https://www.abcam.com/abpromise> or contact our technical team.

Terms and conditions

- Guarantee only valid for products bought direct from Abcam or one of our authorized distributors