

## Product datasheet

# Anti-HAUS3 antibody ab228822

1 Image

### Overview

---

<b>Product name</b>	Anti-HAUS3 antibody
<b>Description</b>	Rabbit polyclonal to HAUS3
<b>Host species</b>	Rabbit
<b>Tested applications</b>	<b>Suitable for:</b> IP
<b>Species reactivity</b>	<b>Reacts with:</b> Human
<b>Immunogen</b>	Synthetic peptide within Human HAUS3 aa 75-125. The exact sequence is proprietary. Database link: <a href="#">Q68CZ6</a>
<b>Positive control</b>	IP: HEK-293T whole cell lysate.
<b>General notes</b>	<p>Reproducibility is key to advancing scientific discovery and accelerating scientists' next breakthrough.</p> <p>Abcam is leading the way with our range of recombinant antibodies, knockout-validated antibodies and knockout cell lines, all of which support improved reproducibility.</p> <p>We are also planning to innovate the way in which we present recommended applications and species on our product datasheets, so that only applications &amp; species that have been tested in our own labs, our suppliers or by selected trusted collaborators are covered by our Abpromise™ guarantee.</p> <p>In preparation for this, we have started to update the applications &amp; species that this product is Abpromise guaranteed for.</p> <p>We are also updating the applications &amp; species that this product has been “predicted to work with,” however this information is not covered by our Abpromise guarantee.</p> <p>Applications &amp; species from publications and Abreviews that have not been tested in our own labs or in those of our suppliers are not covered by the Abpromise guarantee.</p> <p>Please check that this product meets your needs before purchasing. If you have any questions, special requirements or concerns, please send us an inquiry and/or contact our Support team ahead of purchase. Recommended alternatives for this product can be found below, as well as customer reviews and Q&amp;As.</p>

### Properties

---

<b>Form</b>	Liquid
<b>Storage instructions</b>	Shipped at 4°C. Store at +4°C short term (1-2 weeks). Upon delivery aliquot. Store at -20°C long

term. Avoid freeze / thaw cycle.

#### Storage buffer

pH: 6.8

Preservative: 0.09% Sodium azide

Constituents: Tris buffered saline, 0.1% BSA

#### Purity

Immunogen affinity purified

#### Purification notes

ab228822 was affinity purified using an epitope specific to HAUS3 immobilized on solid support.

#### Clonality

Polyclonal

#### Isotype

IgG

### Applications

Our [Abpromise guarantee](#) covers the use of **ab228822** in the following tested applications.

The application notes include recommended starting dilutions; optimal dilutions/concentrations should be determined by the end user.

Application	Abreviews	Notes
IP		Use at an assay dependent concentration. Use at 8 - 15 µl/mg lysate.

### Target

#### Function

Contributes to mitotic spindle assembly, maintenance of centrosome integrity and completion of cytokinesis as part of the HAUS augmin-like complex.

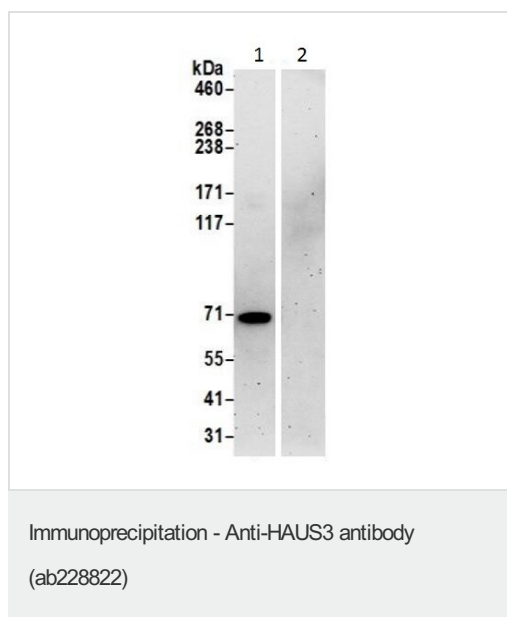
#### Sequence similarities

Belongs to the HAUS3 family.

#### Cellular localization

Cytoplasm > cytoskeleton > centrosome. Cytoplasm > cytoskeleton > spindle. Localizes to interphase centrosomes and to mitotic spindle microtubules.

### Images



HAUS3 was immunoprecipitated from HEK-293T (human epithelial cell line from embryonic kidney transformed with large T antigen) whole cell lysate (1 mg for IP, 20% of IP loaded) with ab228822 at 8 µl per reaction. Western blot was performed from the immunoprecipitate using ab228822 at a 1/1000 dilution.

**Lane 1:** ab228822 IP in HEK-293T whole cell lysate.

**Lane 2:** Control IgG IP in HEK-293T whole cell lysate.

Detection: Chemiluminescence with exposure time of 3 minutes.

**Please note:** All products are "FOR RESEARCH USE ONLY. NOT FOR USE IN DIAGNOSTIC PROCEDURES"

### **Our Abpromise to you: Quality guaranteed and expert technical support**

---

- Replacement or refund for products not performing as stated on the datasheet
- Valid for 12 months from date of delivery
- Response to your inquiry within 24 hours
  
- We provide support in Chinese, English, French, German, Japanese and Spanish
- Extensive multi-media technical resources to help you
- We investigate all quality concerns to ensure our products perform to the highest standards

If the product does not perform as described on this datasheet, we will offer a refund or replacement. For full details of the Abpromise, please visit <https://www.abcam.com/abpromise> or contact our technical team.

### **Terms and conditions**

---

- Guarantee only valid for products bought direct from Abcam or one of our authorized distributors