




Product datasheet

Anti-HBS1L antibody ab224476

4 Images

Overview

Product name	Anti-HBS1L antibody
Description	Rabbit polyclonal to HBS1L
Host species	Rabbit
Tested applications	Suitable for: IHC-P, WB, ICC/IF
Species reactivity	Reacts with: Mouse, Rat, Human Predicted to work with: Cow, Orangutan 
Immunogen	Recombinant fragment corresponding to Human HBS1L aa 5-100. Sequence: RNVRGYNYDEDFEDDDLYGQSVEDDYCISPSTAAQFIY SRRDKPSVEPVE EYDYEDLKESSNSVSNHQLSGFDQARLYSCLDHMRE VLGDAVPDEI Database link: Q9Y450  Run BLAST with  Run BLAST with
Positive control	WB: RT4, U-251 MG sp, NIH/3T3 and NBT-II cell lysate. IHC-P: Human pancreas tissue. ICC/IF: U-2 OS cells.

Properties

Form	Liquid
Storage instructions	Shipped at 4°C. Store at +4°C short term (1-2 weeks). Upon delivery aliquot. Store at -20°C long term. Avoid freeze / thaw cycle.
Storage buffer	pH: 7.20 Preservative: 0.02% Sodium azide Constituents: 40% Glycerol, PBS
Purity	Immunogen affinity purified
Clonality	Polyclonal
Isotype	IgG

Applications

Applications

Our [Abpromise guarantee](#) covers the use of **ab224476** in the following tested applications.

The application notes include recommended starting dilutions; optimal dilutions/concentrations should be determined by the end user.

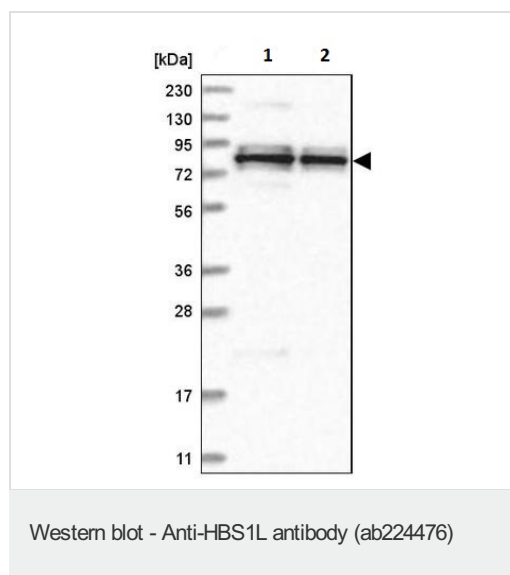
Application	Abreviews	Notes
IHC-P		1/200 - 1/500. Perform heat mediated antigen retrieval with citrate buffer pH 6 before commencing with IHC staining protocol.
WB		1/100 - 1/250. Predicted molecular weight: 75 kDa.
ICC/IF		Use a concentration of 1 - 4 µg/ml. Fixation/Permeabilization: PFA/Triton X-100.

Target

Tissue specificity Detected in heart, brain, placenta, liver, muscle, kidney and pancreas.

Sequence similarities Belongs to the GTP-binding elongation factor family.

Images



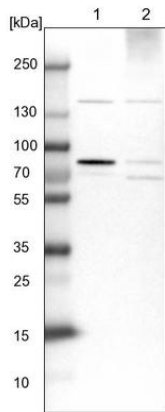
All lanes : Anti-HBS1L antibody (ab224476) at 1/100 dilution

Lane 1 : RT4 (human urinary bladder cancer cell line) cell lysate

Lane 2 : U-251 MG sp (human brain glioma cell line) cell lysate

Developed using the ECL technique.

Predicted band size: 75 kDa



Western blot - Anti-HBS1L antibody (ab224476)

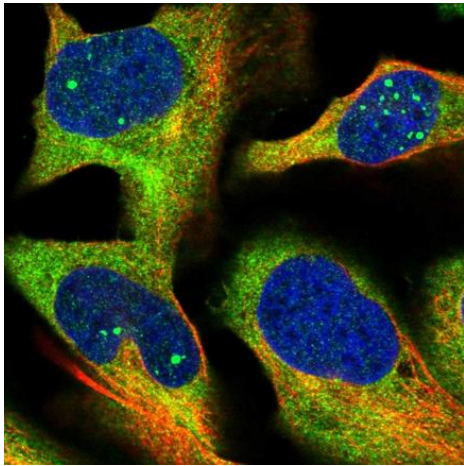
All lanes : Anti-HBS1L antibody (ab224476) at 1/100 dilution

Lane 1 : NIH/3T3 (mouse embryonic fibroblast cell line) cell lysate

Lane 2 : NBT-II cell lysate

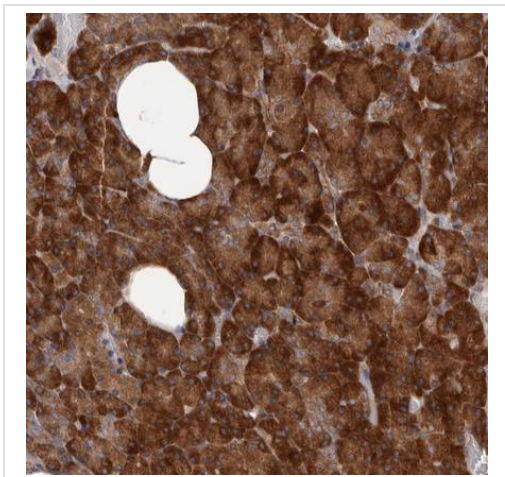
Developed using the ECL technique.

Predicted band size: 75 kDa



Immunocytochemistry/ Immunofluorescence - Anti-HBS1L antibody (ab224476)

PFA-fixed, Triton X-100 permeabilized U-2 OS (human bone osteosarcoma epithelial cell line) cells stained for HBS1L (green) using ab224476 at 4 μ g/ml in ICC/IF.



Paraffin-embedded human pancreas tissue stained for HBS1L with ab224476 at 1/200 dilution in immunohistochemical analysis.

Immunohistochemistry (Formalin/PFA-fixed paraffin-embedded sections) - Anti-HBS1L antibody (ab224476)

Please note: All products are "FOR RESEARCH USE ONLY. NOT FOR USE IN DIAGNOSTIC PROCEDURES"

Our Abpromise to you: Quality guaranteed and expert technical support

- Replacement or refund for products not performing as stated on the datasheet
- Valid for 12 months from date of delivery
- Response to your inquiry within 24 hours
- We provide support in Chinese, English, French, German, Japanese and Spanish
- Extensive multi-media technical resources to help you
- We investigate all quality concerns to ensure our products perform to the highest standards

If the product does not perform as described on this datasheet, we will offer a refund or replacement. For full details of the Abpromise, please visit <https://www.abcam.com/abpromise> or contact our technical team.

Terms and conditions

- Guarantee only valid for products bought direct from Abcam or one of our authorized distributors