

Product datasheet

Anti-HBZ antibody ab228651

1 Image

Overview

Product name	Anti-HBZ antibody
Description	Rabbit polyclonal to HBZ
Host species	Rabbit
Tested applications	Suitable for: WB
Species reactivity	Reacts with: Human
Immunogen	Recombinant fragment within Human HBZ (internal sequence). The exact sequence is proprietary. Database link: P02008
Positive control	WB: K562 whole cell extract.
General notes	<p>Reproducibility is key to advancing scientific discovery and accelerating scientists' next breakthrough.</p> <p>Abcam is leading the way with our range of recombinant antibodies, knockout-validated antibodies and knockout cell lines, all of which support improved reproducibility.</p> <p>We are also planning to innovate the way in which we present recommended applications and species on our product datasheets, so that only applications & species that have been tested in our own labs, our suppliers or by selected trusted collaborators are covered by our Abpromise™ guarantee.</p> <p>In preparation for this, we have started to update the applications & species that this product is Abpromise guaranteed for.</p> <p>We are also updating the applications & species that this product has been “predicted to work with,” however this information is not covered by our Abpromise guarantee.</p> <p>Applications & species from publications and Abreviews that have not been tested in our own labs or in those of our suppliers are not covered by the Abpromise guarantee.</p> <p>Please check that this product meets your needs before purchasing. If you have any questions, special requirements or concerns, please send us an inquiry and/or contact our Support team ahead of purchase. Recommended alternatives for this product can be found below, as well as customer reviews and Q&As.</p>

Properties

Form	Liquid
Storage instructions	Shipped at 4°C. Store at +4°C short term (1-2 weeks). Upon delivery aliquot. Store at -20°C long

term. Avoid freeze / thaw cycle.

Storage buffer

pH: 7.00

Preservative: 0.01% Thimerosal (merthiolate)

Constituents: 1.21% Tris, 0.75% Glycine, 10% Glycerol (glycerin, glycerine)

Purity

Immunogen affinity purified

Clonality

Polyclonal

Isotype

IgG

Applications

Our [Abpromise guarantee](#) covers the use of **ab228651** in the following tested applications.

The application notes include recommended starting dilutions; optimal dilutions/concentrations should be determined by the end user.

Application	Abreviews	Notes
WB		1/5000 - 1/20000. Predicted molecular weight: 16 kDa.

Target

Function

The zeta chain is an alpha-type chain of mammalian embryonic hemoglobin, synthesized primarily in the yolk sac.

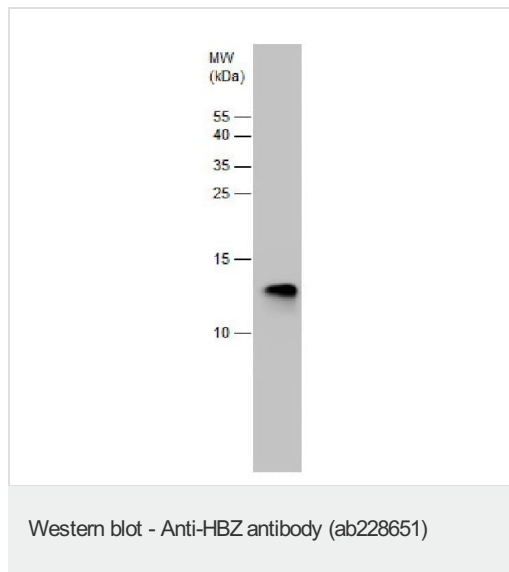
Tissue specificity

Red blood cells.

Sequence similarities

Belongs to the globin family.

Images



Anti-HBZ antibody (ab228651) at 1/10000 dilution + K562 (human chronic myelogenous leukemia cell line from bone marrow) whole cell lysate at 30 µg

Developed using the ECL technique.

Predicted band size: 16 kDa

15% SDS-PAGE

Please note: All products are "FOR RESEARCH USE ONLY. NOT FOR USE IN DIAGNOSTIC PROCEDURES"

Our Abpromise to you: Quality guaranteed and expert technical support

- Replacement or refund for products not performing as stated on the datasheet
- Valid for 12 months from date of delivery
- Response to your inquiry within 24 hours

- We provide support in Chinese, English, French, German, Japanese and Spanish
- Extensive multi-media technical resources to help you
- We investigate all quality concerns to ensure our products perform to the highest standards

If the product does not perform as described on this datasheet, we will offer a refund or replacement. For full details of the Abpromise, please visit <https://www.abcam.com/abpromise> or contact our technical team.

Terms and conditions

- Guarantee only valid for products bought direct from Abcam or one of our authorized distributors