


## Product datasheet

# Anti-HCC1 antibody ab12326

★★★★★ 1 Abreviews 1 Image

### Overview

---

<b>Product name</b>	Anti-HCC1 antibody
<b>Description</b>	Rabbit polyclonal to HCC1
<b>Host species</b>	Rabbit
<b>Tested applications</b>	<b>Suitable for:</b> WB
<b>Species reactivity</b>	<b>Reacts with:</b> Human <b>Predicted to work with:</b> Mouse, Rat, Rabbit, Horse, Guinea pig, Cow, Dog, Pig, Rhesus monkey, Gorilla, Orangutan 
<b>Immunogen</b>	Synthetic peptide corresponding to Human HCC1 aa 480-530. (Peptide available as <a href="#">ab40426</a> )
<b>Positive control</b>	Nuclear extract from HeLa cells.
<b>General notes</b>	<p>The Life Science industry has been in the grips of a reproducibility crisis for a number of years. Abcam is leading the way in addressing this with our range of recombinant monoclonal antibodies and knockout edited cell lines for gold-standard validation. Please check that this product meets your needs before purchasing.</p> <p>If you have any questions, special requirements or concerns, please send us an inquiry and/or contact our Support team ahead of purchase. Recommended alternatives for this product can be found below, along with publications, customer reviews and Q&amp;As</p>

### Properties

---

<b>Form</b>	Liquid
<b>Storage instructions</b>	Shipped at 4°C. Upon delivery aliquot and store at -20°C. Avoid freeze / thaw cycles.
<b>Storage buffer</b>	pH: 7 Preservative: 0.1% Sodium azide Constituents: 0.021% PBS, 1.764% Sodium citrate, 1.815% Tris
<b>Purity</b>	Immunogen affinity purified
<b>Purification notes</b>	Purified using the peptide immobilized on solid support.
<b>Clonality</b>	Polyclonal
<b>Isotype</b>	IgG

## Applications

### The Abpromise guarantee

Our [Abpromise guarantee](#) covers the use of ab12326 in the following tested applications.

The application notes include recommended starting dilutions; optimal dilutions/concentrations should be determined by the end user.

Application	Abreviews	Notes
WB	★★★★★ (1)	1/1000 - 1/10000. Predicted molecular weight: 59 kDa.

## Target

### Function

Transcriptional coactivator for steroid nuclear receptors ESR1/ER-alpha and ESR2/ER-beta, and JUN/AP-1 (By similarity). May be involved in pre-mRNA splicing process.

### Tissue specificity

Widely expressed. Highly expressed in pancreas, skeletal muscle, lung and brain. Expressed at intermediate level in kidney, liver and heart.

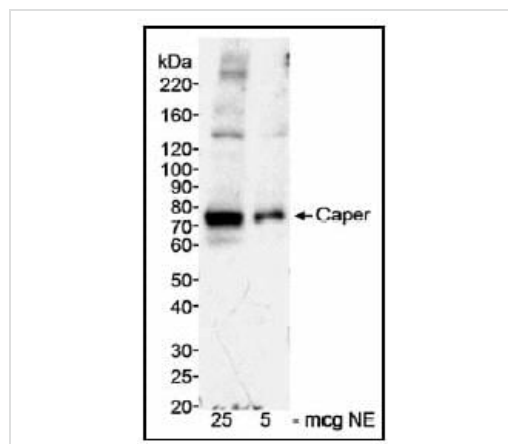
### Sequence similarities

Belongs to the splicing factor SR family.  
Contains 3 RRM (RNA recognition motif) domains.

### Cellular localization

Nucleus speckle. Concentrated in nuclear speckles. Colocalizes with the core spliceosomal snRNP proteins.

## Images



Western blot - Anti-HCC1 antibody (ab12326)

Detection of Human Caper by Western Blot. Samples: Nuclear extract (NE) from HeLa cells. Antibody: ab12326 used at 0.3 mcg/ml. Detection: Chemiluminescence with an exposure time of 5 minutes.

Detection of Human Caper by Western Blot. Samples: Nuclear extract (NE) from HeLa cells. Antibody: ab12326 used at 0.3 mcg/ml. Detection: Chemiluminescence with an exposure time of 5 minutes.

**Please note:** All products are "FOR RESEARCH USE ONLY. NOT FOR USE IN DIAGNOSTIC PROCEDURES"

## Our Abpromise to you: Quality guaranteed and expert technical support

- Replacement or refund for products not performing as stated on the datasheet
- Valid for 12 months from date of delivery
- Response to your inquiry within 24 hours
- We provide support in Chinese, English, French, German, Japanese and Spanish

- Extensive multi-media technical resources to help you
- We investigate all quality concerns to ensure our products perform to the highest standards

If the product does not perform as described on this datasheet, we will offer a refund or replacement. For full details of the Abpromise, please visit <https://www.abcam.com/abpromise> or contact our technical team.

### **Terms and conditions**

---

- Guarantee only valid for products bought direct from Abcam or one of our authorized distributors