



Product datasheet

Anti-HDHD3 antibody ab235319

3 Images

Overview

Product name	Anti-HDHD3 antibody
Description	Rabbit polyclonal to HDHD3
Host species	Rabbit
Tested applications	Suitable for: WB, Immunoelectrophoresis
Species reactivity	Reacts with: Mouse, Human
Immunogen	<p>Recombinant full length protein corresponding to Human HDHD3 aa 1-251. Sequence:</p> <p>MAHRLQIRLLTWDVKDTLLRLRHPLGEAYATKARAHGL EVEPSALEQGFR QAYRAQSHSFPNYGLSHGLTSRQWWLDVVLQTFHLA GVQDAQAVAPIAEQ LYKDFSHPCWQVLDGAEDTLRECRTRGLRLAVISNF DRRLEGILGGLGL REHFDFVLTSEAAGWPKPDPRIFQEALRLAHMEPVVA AHVGDNYLCDYQG PRAVGMHSFLVVGPAQALDPVVRDSVPKEHILPSLAHL LPALDCLEGSTPG L</p> <p>Database link: Q9BSH5</p> <p style="text-align: right;">  Run BLAST with  Run BLAST with </p>
Positive control	WB: Mouse small intestine and liver lysates; HT-29, HepG2 and A431 whole cell lysates. IHC-P: Human adrenal gland and small intestine tissue.

Properties

Form	Liquid
Storage instructions	Shipped at 4°C. Store at +4°C short term (1-2 weeks). Upon delivery aliquot. Store at -20°C long term. Avoid freeze / thaw cycle.
Storage buffer	<p>pH: 7.40 Preservative: 0.03% Proclin Constituents: PBS, 50% Glycerol</p>
Purity	Protein G purified

Purification notes	Purity >95%.
Clonality	Polyclonal
Isotype	IgG

Applications

Our [Abpromise guarantee](#) covers the use of **ab235319** in the following tested applications.

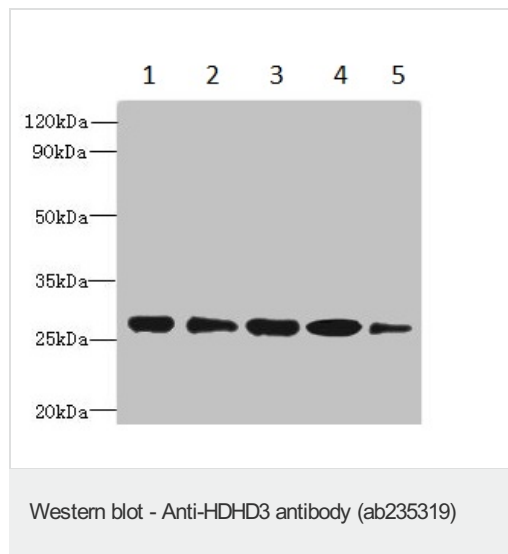
The application notes include recommended starting dilutions; optimal dilutions/concentrations should be determined by the end user.

Application	Abreviews	Notes
WB		1/500 - 1/2000. Detects a band of approximately 28 kDa (predicted molecular weight: 28 kDa).
Immunoelectrophoresis		1/20 - 1/200.

Target

Sequence similarities Belongs to the HAD-like hydrolase superfamily.

Images



All lanes : Anti-HDHD3 antibody (ab235319) at 1/500 dilution

Lane 1 : Mouse small intestine lysate

Lane 2 : HT-29 (human colorectal adenocarcinoma cell line) whole cell lysate

Lane 3 : Mouse liver lysate

Lane 4 : HepG2 (human liver hepatocellular carcinoma cell line) whole cell lysate

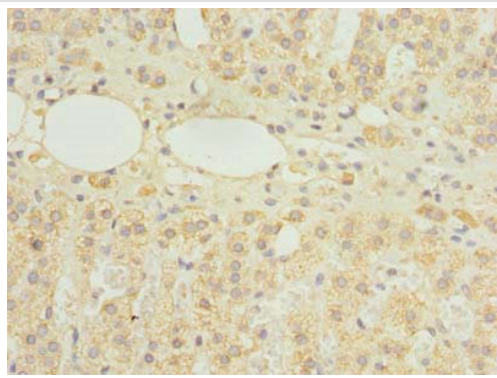
Lane 5 : A431 whole cell lysate

Secondary

All lanes : Goat polyclonal to Rabbit IgG at 1/10000 dilution

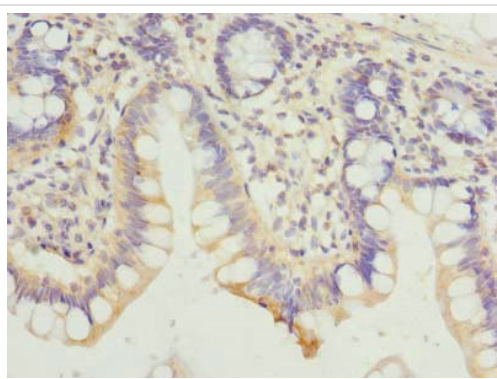
Predicted band size: 28 kDa

Observed band size: 28 kDa



Immunohistochemistry (Formalin/PFA-fixed paraffin-embedded sections) - Anti-HDHD3 antibody (ab235319)

Paraffin-embedded human adrenal gland tissue stained for HDHD3 using ab235319 at 1/100 dilution in immunohistochemical analysis.



Immunohistochemistry (Formalin/PFA-fixed paraffin-embedded sections) - Anti-HDHD3 antibody (ab235319)

Paraffin-embedded human small intestine tissue stained for HDHD3 using ab235319 at 1/100 dilution in immunohistochemical analysis.

Please note: All products are "FOR RESEARCH USE ONLY. NOT FOR USE IN DIAGNOSTIC PROCEDURES"

Our Abpromise to you: Quality guaranteed and expert technical support

- Replacement or refund for products not performing as stated on the datasheet
- Valid for 12 months from date of delivery
- Response to your inquiry within 24 hours
- We provide support in Chinese, English, French, German, Japanese and Spanish
- Extensive multi-media technical resources to help you
- We investigate all quality concerns to ensure our products perform to the highest standards

If the product does not perform as described on this datasheet, we will offer a refund or replacement. For full details of the Abpromise, please visit <https://www.abcam.com/abpromise> or contact our technical team.

Terms and conditions

- Guarantee only valid for products bought direct from Abcam or one of our authorized distributors