

Product datasheet

Anti-HEATR2 antibody ab227508

2 Images

Overview

<b>Product name</b>	Anti-HEATR2 antibody
<b>Description</b>	Rabbit polyclonal to HEATR2
<b>Host species</b>	Rabbit
<b>Tested applications</b>	<b>Suitable for:</b> WB, ICC/IF
<b>Species reactivity</b>	<b>Reacts with:</b> Human
<b>Immunogen</b>	Recombinant fragment within Human HEATR2 (internal sequence). The exact sequence is proprietary. Database link: <a href="#">Q86Y56</a>
<b>Positive control</b>	WB: HCT 116 whole cell extract. ICC/IF: Raji cells.

Properties

<b>Form</b>	Liquid
<b>Storage instructions</b>	Shipped at 4°C. Store at +4°C short term (1-2 weeks). Upon delivery aliquot. Store at -20°C long term. Avoid freeze / thaw cycle.
<b>Storage buffer</b>	pH: 7.00 Preservative: 0.01% Thimerosal (merthiolate) Constituents: PBS, 20% Glycerol
<b>Purity</b>	Immunogen affinity purified
<b>Clonality</b>	Polyclonal
<b>Isotype</b>	IgG

Applications

Our [Abpromise guarantee](#) covers the use of **ab227508** in the following tested applications.

The application notes include recommended starting dilutions; optimal dilutions/concentrations should be determined by the end user.

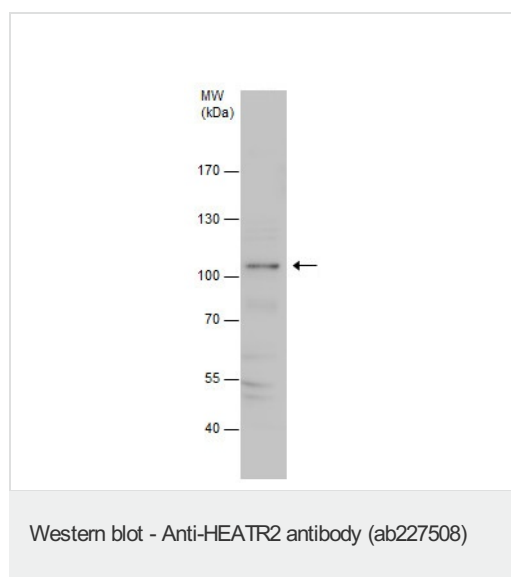
Application	Abreviews	Notes
WB		1/500 - 1/3000. Predicted molecular weight: 94 kDa.

Application	Abreviews	Notes
ICC/IF		1/100 - 1/1000.

## Target

**Sequence similarities** Contains 10 HEAT repeats.

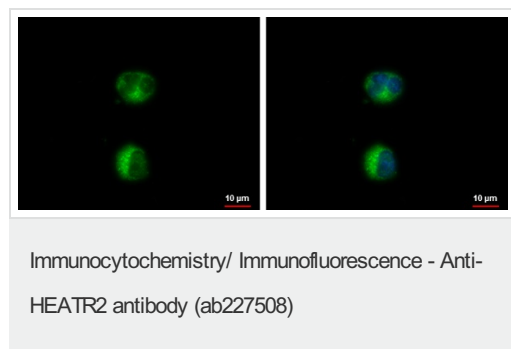
## Images



Anti-HEATR2 antibody (ab227508) at 1/1000 dilution + HCT 116 (human colorectal carcinoma cell line) whole cell extract at 30 µg

**Predicted band size:** 94 kDa

7.5% SDS-PAGE gel.



Ice-cold methanol-fixed Raji (human Burkitt's lymphoma cell line) cells stained for HEATR2 (green) using ab227508 at 1/500 dilution in ICC/IF.

Nuclear counterstain: Hoechst 33342 (blue).

**Please note:** All products are "FOR RESEARCH USE ONLY. NOT FOR USE IN DIAGNOSTIC PROCEDURES"

## Our Abpromise to you: Quality guaranteed and expert technical support

- Replacement or refund for products not performing as stated on the datasheet
- Valid for 12 months from date of delivery
- Response to your inquiry within 24 hours
- We provide support in Chinese, English, French, German, Japanese and Spanish

- Extensive multi-media technical resources to help you
- We investigate all quality concerns to ensure our products perform to the highest standards

If the product does not perform as described on this datasheet, we will offer a refund or replacement. For full details of the Abpromise, please visit <https://www.abcam.com/abpromise> or contact our technical team.

### **Terms and conditions**

---

- Guarantee only valid for products bought direct from Abcam or one of our authorized distributors