



Product datasheet

Anti-HEC1/HEC antibody ab3393

1 Abreviews 1 Image

Overview

Product name	Anti-HEC1/HEC antibody
Description	Goat polyclonal to HEC1/HEC
Host species	Goat
Tested applications	Suitable for: WB Unsuitable for: ICC/IF
Species reactivity	Reacts with: Human
Immunogen	Synthetic peptide corresponding to Human HEC1/HEC aa 630-642 (C terminal). Sequence: C-YEKKATLIKSSEE (Peptide available as ab22944)  Run BLAST with  Run BLAST with
Positive control	Hela lysate.
General notes	GenBank Accession Number – NP_006092 Gene Ontology terms - mitotic chromosome segregation; mitosis; centromere; nucleus This product was previously labelled as HEC1

Properties

Form	Liquid
Storage instructions	Shipped at 4°C. Upon delivery aliquot and store at -20°C or -80°C. Avoid repeated freeze / thaw cycles.
Storage buffer	pH: 7.30 Constituents: Tris buffered saline, 0.5% BSA
Purity	Immunogen affinity purified
Purification notes	Purified from goat serum by ammonium sulphate precipitation followed by antigen affinity chromatography using the immunizing peptide.
Clonality	Polyclonal
Isotype	IgG

Applications

Our [Abpromise guarantee](#) covers the use of **ab3393** in the following tested applications.

The application notes include recommended starting dilutions; optimal dilutions/concentrations should be determined by the end user.

Application	Abreviews	Notes
-------------	-----------	-------

WB

Application notes

Peptide ELISA: antibody detection limit dilution 1/32000.

WB: Use at a concentration of 0.5 - 2.0 µg/ml. Detects a band of approximately 75-80 kDa (predicted molecular weight: 74 kDa).

This antibody does not seem suitable for using in ICC/IF (please refer to Abreview).

Not tested in other applications.

Optimal dilutions/concentrations should be determined by the end user.

Target

Function

Acts as a component of the essential kinetochore-associated NDC80 complex, which is required for chromosome segregation and spindle checkpoint activity. Required for kinetochore integrity and the organization of stable microtubule binding sites in the outer plate of the kinetochore.

Sequence similarities

Belongs to the NDC80/HEC1 family.

Developmental stage

Expression peaks in mitosis.

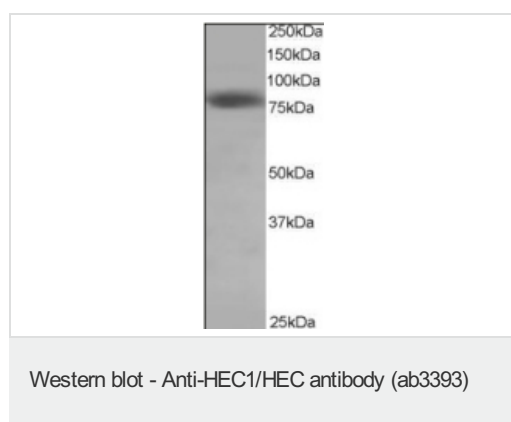
Post-translational modifications

Phosphorylation begins in S phase of the cell cycle and peaks in mitosis. Phosphorylated by NEK2. May also be phosphorylated by AURKA and AURKB.

Cellular localization

Nucleus. Chromosome > centromere > kinetochore. Localizes to kinetochores from late prophase to anaphase. Localizes specifically to the outer plate of the kinetochore.

Images



ab3393 staining (0.5µg/ml) of HeLa lysate (RIPA buffer, 35µg total protein per lane). Primary incubated for 1 hour. Detected by western blot using chemiluminescence.

ab3393 staining (0.5µg/ml) of HeLa lysate (RIPA buffer, 35µg total protein per lane). Primary incubated for 1 hour. Detected by western blot using chemiluminescence.

Please note: All products are "FOR RESEARCH USE ONLY AND ARE NOT INTENDED FOR DIAGNOSTIC OR THERAPEUTIC USE"

Our Abpromise to you: Quality guaranteed and expert technical support

- Replacement or refund for products not performing as stated on the datasheet
- Valid for 12 months from date of delivery
- Response to your inquiry within 24 hours

- We provide support in Chinese, English, French, German, Japanese and Spanish
- Extensive multi-media technical resources to help you
- We investigate all quality concerns to ensure our products perform to the highest standards

If the product does not perform as described on this datasheet, we will offer a refund or replacement. For full details of the Abpromise, please visit <https://www.abcam.com/abpromise> or contact our technical team.

Terms and conditions

- Guarantee only valid for products bought direct from Abcam or one of our authorized distributors