

## Product datasheet

# Anti-HECTD3 antibody ab241413

[2 Images](#)

### Overview

---

<b>Product name</b>	Anti-HECTD3 antibody
<b>Description</b>	Rabbit polyclonal to HECTD3
<b>Host species</b>	Rabbit
<b>Tested applications</b>	<b>Suitable for:</b> WB, IP
<b>Species reactivity</b>	<b>Reacts with:</b> Mouse, Human
<b>Immunogen</b>	Synthetic peptide within Human HECTD3 aa 811-861. The exact sequence is proprietary. Database link: <a href="#">Q5T447</a>
<b>Positive control</b>	WB: HeLa, HEK-293T, Jurkat, TCMK-1 and NIH/3T3 whole cell lysates. IP: HEK-293T whole cell lysate.
<b>General notes</b>	<p>Reproducibility is key to advancing scientific discovery and accelerating scientists' next breakthrough.</p> <p>Abcam is leading the way with our range of recombinant antibodies, knockout-validated antibodies and knockout cell lines, all of which support improved reproducibility.</p> <p>We are also planning to innovate the way in which we present recommended applications and species on our product datasheets, so that only applications &amp; species that have been tested in our own labs, our suppliers or by selected trusted collaborators are covered by our Abpromise™ guarantee.</p> <p>In preparation for this, we have started to update the applications &amp; species that this product is Abpromise guaranteed for.</p> <p>We are also updating the applications &amp; species that this product has been "predicted to work with," however this information is not covered by our Abpromise guarantee.</p> <p>Applications &amp; species from publications and Abreviews that have not been tested in our own labs or in those of our suppliers are not covered by the Abpromise guarantee.</p> <p>Please check that this product meets your needs before purchasing. If you have any questions, special requirements or concerns, please send us an inquiry and/or contact our Support team ahead of purchase. Recommended alternatives for this product can be found below, as well as customer reviews and Q&amp;As.</p>

### Properties

---

<b>Form</b>	Liquid
-------------	--------

<b>Storage instructions</b>	Shipped at 4°C. Store at +4°C short term (1-2 weeks). Upon delivery aliquot. Store at -20°C long term. Avoid freeze / thaw cycle.
<b>Storage buffer</b>	pH: 7 Preservative: 0.09% Sodium azide Constituent: Tris citrate/phosphate
<b>Purity</b>	pH 7 to 8 Immunogen affinity purified
<b>Purification notes</b>	ab241413 was affinity purified using an epitope specific to HECTD3 immobilized on solid support.
<b>Clonality</b>	Polyclonal
<b>Isotype</b>	IgG

## Applications

Our [Abpromise guarantee](#) covers the use of **ab241413** in the following tested applications.

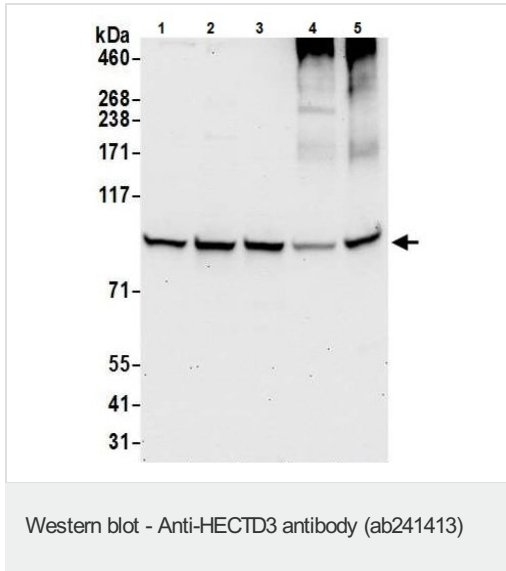
The application notes include recommended starting dilutions; optimal dilutions/concentrations should be determined by the end user.

Application	Abreviews	Notes
WB		1/500 - 1/2500. Predicted molecular weight: 97 kDa.
IP		Use at 2-10 µg/mg of lysate.

## Target

<b>Function</b>	E3 ubiquitin ligases accepts ubiquitin from an E2 ubiquitin-conjugating enzyme in the form of a thioester and then directly transfers the ubiquitin to targeted substrates. Mediates ubiquitination of TRIOBP and its subsequent proteasomal degradation, thus facilitating cell cycle progression by regulating the turn-over of TRIOBP. Mediates also ubiquitination of STX8.
<b>Pathway</b>	Protein modification; protein ubiquitination.
<b>Sequence similarities</b>	Contains 1 DOC domain. Contains 1 HECT (E6AP-type E3 ubiquitin-protein ligase) domain.
<b>Cellular localization</b>	Cytoplasm > perinuclear region.

## Images



**All lanes :** Anti-HECTD3 antibody (ab241413) at 1 µg/ml

**Lane 1 :** HeLa (human epithelial cell line from cervix adenocarcinoma) whole cell lysate

**Lane 2 :** HEK-293T (human epithelial cell line from embryonic kidney transformed with large T antigen) whole cell lysate

**Lane 3 :** Jurkat (human T cell leukemia cell line from peripheral blood) whole cell lysate

**Lane 4 :** TCMK-1 (mouse kidney epithelial cell line) whole cell lysate

**Lane 5 :** NIH/3T3 (mouse embryo fibroblast cell line) whole cell lysate

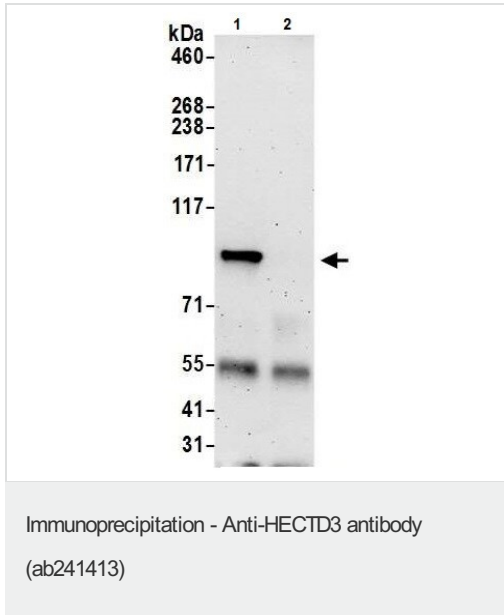
Lysates/proteins at 50 µg per lane.

Developed using the ECL technique.

**Predicted band size:** 97 kDa

**Exposure time:** 30 seconds

Lysates prepared using NETN lysis buffer.



HECTD3 was immunoprecipitated from HEK-293T (human epithelial cell line from embryonic kidney transformed with large T antigen) whole cell lysate (1 mg for IP, 20% of IP loaded) with ab241413 at 6 µg/reaction. Western blot was performed from the immunoprecipitate using ab241413 at 1 µg/ml.

**Lane 1:** ab241413 IP in HEK-293T whole cell lysate.

**Lane 2:** Control IgG IP in HEK-293T whole cell lysate.

Detection: Chemiluminescence with exposure time of 3 minutes.

Lysates prepared using NETN lysis buffer.

**Please note:** All products are "FOR RESEARCH USE ONLY. NOT FOR USE IN DIAGNOSTIC PROCEDURES"

### Our Abpromise to you: Quality guaranteed and expert technical support

- Replacement or refund for products not performing as stated on the datasheet
- Valid for 12 months from date of delivery
- Response to your inquiry within 24 hours
- We provide support in Chinese, English, French, German, Japanese and Spanish
- Extensive multi-media technical resources to help you
- We investigate all quality concerns to ensure our products perform to the highest standards

If the product does not perform as described on this datasheet, we will offer a refund or replacement. For full details of the Abpromise, please visit <https://www.abcam.com/abpromise> or contact our technical team.

### Terms and conditions

- Guarantee only valid for products bought direct from Abcam or one of our authorized distributors