

Product datasheet

HeLa Ser/Thr Phosphatase-Inhibited Whole Cell Lysate Set: Calyculin-Treated and Vehicle-Treated ab135395

2 Images

Overview

Product name	HeLa Ser/Thr Phosphatase-Inhibited Whole Cell Lysate Set: Calyculin-Treated and Vehicle-Treated
Product overview	<p>HeLa whole cell extracts were collected in lysis buffer after 3 hour treatment with Calyculin A (50 nM) or vehicle (DMSO) in serum-free media. The protein content was determined by BCA assay. Calyculin A is a potent phosphatase inhibitor. Unlike Okadaic Acid, which only acts on protein phosphatase PP2A, Calyculin A inhibits both PP1 and PP2A. Cells treated with Calyculin A accumulate serine/threonine phosphorylation making them a strong positive control for phospho-threonine or phospho-serine specific antibodies.</p> <p>Concentration:</p> <p>HeLa Lysate - Vehicle Treated Control - 200 µg at 1 mg/mL HeLa Lysate - Calyculin Treated - 200 µg at 1 mg/mL</p> <p>The lysate is supplied in SDS-PAGE loading buffer with DTT and is ready to load on a gel.</p>
Tested applications	Suitable for: WB, SDS-PAGE

Properties

Storage instructions Store at -80°C. Please refer to protocols.

Components	2 units
Calyculin-Treated HeLa Lysate	1 x 200µg
Control for Calyculin-Treated HeLa Lysate	1 x 200µg

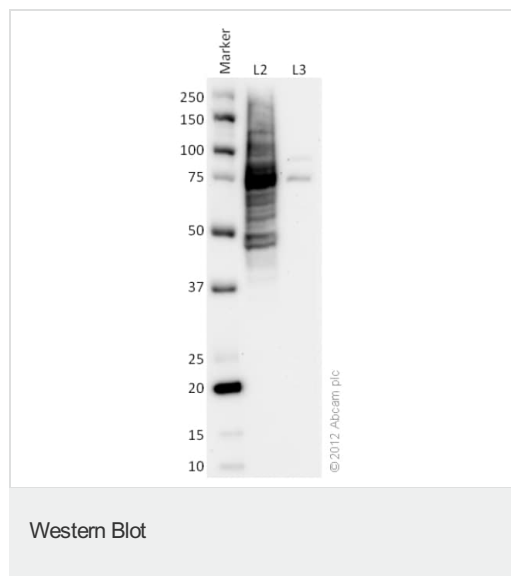
Applications

The Abpromise guarantee Our [Abpromise guarantee](#) covers the use of ab135395 in the following tested applications.

The application notes include recommended starting dilutions; optimal dilutions/concentrations should be determined by the end user.

Application	Abreviews	Notes
WB		Use at an assay dependent concentration.
SDS-PAGE		Use at an assay dependent concentration.

Images



All lanes: Anti-Phosphoserine/Threonine antibody ([ab17464](#)) at 1/1000

Lane 1: Marker

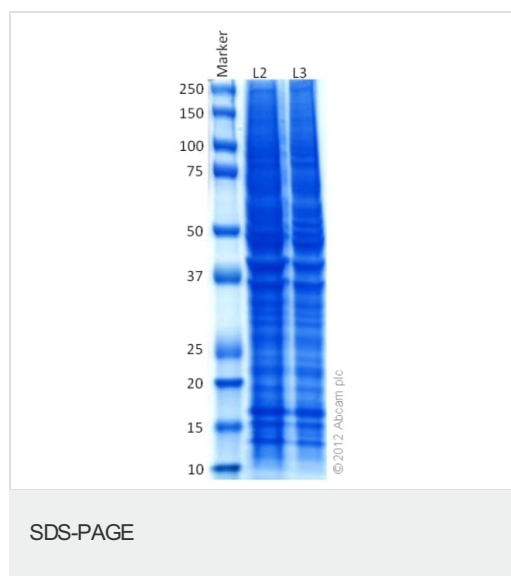
Lane 2: HeLa Whole Cell Lysate - Calyculin Treated at 20 µg

Lane 3: HeLa Whole Cell Lysate – Untreated Control at 20 µg

Secondary:

Goat polyclonal to Rabbit IgG – Pre-Adsorbed (HRP) at 1/6000 developed using the ECL technique.

Performed under reducing conditions.



Lane 1: Marker

Lane 2: HeLa Whole Cell Lysate - Calyculin Treated at 20 µg

Lane 3: HeLa Whole Cell Lysate – Untreated control at 20 µg

Gel

10-20% acrylamide separation gel

Please note: All products are "FOR RESEARCH USE ONLY. NOT FOR USE IN DIAGNOSTIC PROCEDURES"

Our Abpromise to you: Quality guaranteed and expert technical support

- Replacement or refund for products not performing as stated on the datasheet

- Valid for 12 months from date of delivery
- Response to your inquiry within 24 hours

- We provide support in Chinese, English, French, German, Japanese and Spanish
- Extensive multi-media technical resources to help you
- We investigate all quality concerns to ensure our products perform to the highest standards

If the product does not perform as described on this datasheet, we will offer a refund or replacement. For full details of the Abpromise, please visit <https://www.abcam.com/abpromise> or contact our technical team.

Terms and conditions

- Guarantee only valid for products bought direct from Abcam or one of our authorized distributors