

Product datasheet

Anti-Helicobacter pylori antibody ab140128

1 Image

Overview

Product name	Anti-Helicobacter pylori antibody
Description	Rabbit polyclonal to Helicobacter pylori
Host species	Rabbit
Tested applications	Suitable for: IHC-P
Species reactivity	Reacts with: Other species
Immunogen	Tissue, cells or virus corresponding to Helicobacter pylori.
Positive control	Human gastritis tissue.

Properties

Form	Liquid
Storage instructions	Shipped at 4°C. Store at -20°C.
Storage buffer	Preservative: 0.01% Sodium azide Constituents: 50% Glycerol, 0.05% BSA
Purity	Protein A purified
Clonality	Polyclonal
Isotype	IgG

Applications

Our [Abpromise guarantee](#) covers the use of **ab140128** in the following tested applications.

The application notes include recommended starting dilutions; optimal dilutions/concentrations should be determined by the end user.

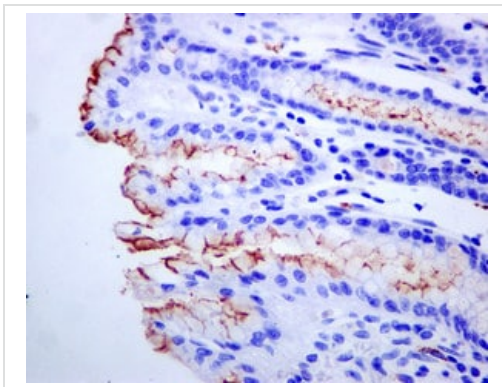
Application	Abreviews	Notes
IHC-P		1/250 - 1/500.

Target

Relevance The spiral shaped bacterium *Helicobacter pylori* is strongly associated with inflammation of the

stomach and is also implicated in the development of gastric malignancy. *H. pylori* is known to cause peptic ulcers and chronic gastritis in human. It is associated with duodenal ulcers and may be involved in development of adenocarcinoma and low-grade lymphoma of mucosa associated lymphoid tissue in the stomach. More recently this bacterium has also been implicated with a number of vascular disorders including heart disease. It is not clear how *H. pylori* is transmitted or why some patients become symptomatic while others do not. The bacteria are most likely spread from person to person through fecal-to-oral or oral-to-oral routes. Possible environmental reservoirs include contaminated water sources. Serological tests that measure specific *H. pylori* IgG antibodies can determine if a person has been infected although these methods do have drawbacks and limitations.

Images



Immunohistochemical analysis of paraffin-embedded Human gastritis tissue labelling *Helicobacter pylori* with ab140128 at 1/250 dilution.

Immunohistochemistry (Formalin/PFA-fixed paraffin-embedded sections) - Anti-*Helicobacter pylori* antibody (ab140128)

Please note: All products are "FOR RESEARCH USE ONLY. NOT FOR USE IN DIAGNOSTIC PROCEDURES"

Our Abpromise to you: Quality guaranteed and expert technical support

- Replacement or refund for products not performing as stated on the datasheet
- Valid for 12 months from date of delivery
- Response to your inquiry within 24 hours
- We provide support in Chinese, English, French, German, Japanese and Spanish
- Extensive multi-media technical resources to help you
- We investigate all quality concerns to ensure our products perform to the highest standards

If the product does not perform as described on this datasheet, we will offer a refund or replacement. For full details of the Abpromise, please visit <https://www.abcam.com/abpromise> or contact our technical team.

Terms and conditions

- Guarantee only valid for products bought direct from Abcam or one of our authorized distributors