


Product datasheet

Anti-Hemoglobin subunit alpha antibody ab82871

★★★★★ 1 Abreviews 1 References 3 Images

Overview

Product name	Anti-Hemoglobin subunit alpha antibody
Description	Rabbit polyclonal to Hemoglobin subunit alpha
Host species	Rabbit
Tested applications	Suitable for: IHC-P, WB
Species reactivity	Reacts with: Rat, Human Predicted to work with: Chimpanzee, Monkey, Baboon, Macaque monkey, Rhesus monkey, Gorilla, Dolphin, Orangutan 
Immunogen	Synthetic peptide corresponding to Human Hemoglobin subunit alpha aa 100 to the C-terminus (C terminal) conjugated to keyhole limpet haemocyanin. (Peptide available as ab93083)
Positive control	This antibody gave a positive signal in human bone marrow and spleen tissue lysates.

Properties

Form	Liquid
Storage instructions	Shipped at 4°C. Store at +4°C short term (1-2 weeks). Upon delivery aliquot. Store at -20°C or -80°C. Avoid freeze / thaw cycle.
Storage buffer	Preservative: 0.02% Sodium Azide Constituents: 1% BSA, PBS, pH 7.4
Purity	Immunogen affinity purified
Clonality	Polyclonal
Isotype	IgG

Applications

Our [Abpromise guarantee](#) covers the use of **ab82871** in the following tested applications.

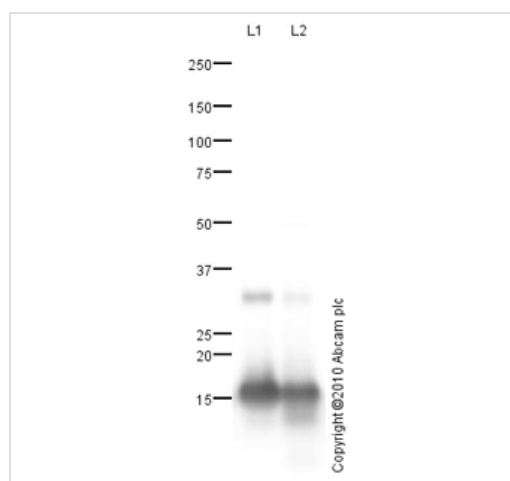
The application notes include recommended starting dilutions; optimal dilutions/concentrations should be determined by the end user.

Application	Abreviews	Notes
IHC-P	★★★★★	Use a concentration of 1 µg/ml. Perform heat mediated antigen retrieval before commencing with IHC staining protocol.
WB		1/250. Detects a band of approximately 15 kDa (predicted molecular weight: 15 kDa).

Target

Function	Involved in oxygen transport from the lung to the various peripheral tissues.
Tissue specificity	Red blood cells.
Involvement in disease	Heinz body anemias Alpha-thalassemia Alpha(0)-thalassemia is associated with non-immune hydrops fetalis, a generalized edema of the fetus with fluid accumulation in the body cavities due to non-immune causes. Non-immune hydrops fetalis is not a diagnosis in itself but a symptom, a feature of many genetic disorders, and the end-stage of a wide variety of disorders. Hemoglobin H disease
Sequence similarities	Belongs to the globin family.
Post-translational modifications	The initiator Met is not cleaved in variant Thionville and is acetylated.

Images



Western blot - Anti-Hemoglobin subunit alpha antibody (ab82871)

All lanes : Anti-Hemoglobin subunit alpha antibody (ab82871) at 1/250 dilution

Lane 1 : Bone Marrow (Human) Tissue Lysate - adult normal tissue

Lane 2 : Human spleen tissue lysate - total protein ([ab29699](#))

Lysates/proteins at 10 µg per lane.

Secondary

All lanes : Goat polyclonal to Rabbit IgG - H&L - Pre-Adsorbed (HRP) at 1/3000 dilution

Developed using the ECL technique.

Performed under reducing conditions.

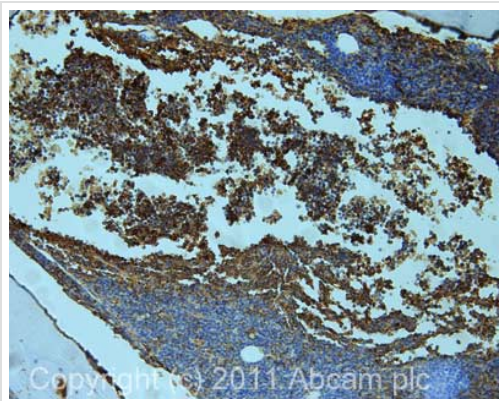
Predicted band size: 15 kDa

Observed band size: 15 kDa

Additional bands at: 31 kDa. We are unsure as to the identity of

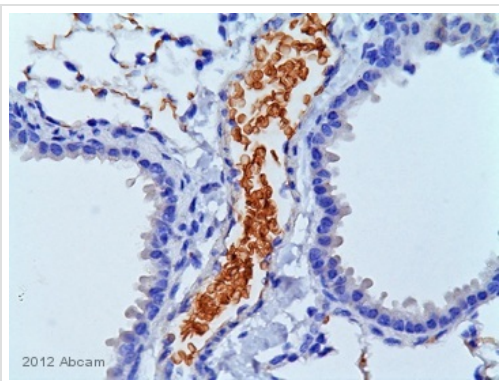
these extra bands.

Exposure time: 30 seconds



Immunohistochemistry (Formalin/PFA-fixed paraffin-embedded sections) - Anti-Hemoglobin subunit alpha antibody (ab82871)

IHC image of Hemoglobin A1c staining in human bone marrow formalin fixed paraffin embedded tissue section, performed on a Leica Bond™ system using the standard protocol F. The section was pre-treated using heat mediated antigen retrieval with sodium citrate buffer (pH6, epitope retrieval solution 1) for 20 mins. The section was then incubated with ab82871, 1µg/ml, for 15 mins at room temperature and detected using an HRP conjugated compact polymer system. DAB was used as the chromogen. The section was then counterstained with haematoxylin and mounted with DPX.



Immunohistochemistry (Formalin/PFA-fixed paraffin-embedded sections) - Anti-Hemoglobin subunit alpha antibody (ab82871)

This image is courtesy of an anonymous Abreview

ab17976 staining Hemoglobin A1c in Rat Lung tissue sections by Immunohistochemistry (IHC-P - paraformaldehyde-fixed, paraffin-embedded sections). Tissue was fixed with formaldehyde and blocked with 1% BSA in PBS for 20 minutes at 25°C; antigen retrieval was by heat mediation in a citrate buffer pH6.0. Samples were incubated with primary antibody (1/100 in blocking buffer) for 1 hours at 25°C. An undiluted HRP-conjugated Goat anti-rabbit IgG polyclonal was used as the secondary antibody

Please note: All products are "FOR RESEARCH USE ONLY. NOT FOR USE IN DIAGNOSTIC PROCEDURES"

Our Abpromise to you: Quality guaranteed and expert technical support

- Replacement or refund for products not performing as stated on the datasheet
- Valid for 12 months from date of delivery
- Response to your inquiry within 24 hours
- We provide support in Chinese, English, French, German, Japanese and Spanish
- Extensive multi-media technical resources to help you
- We investigate all quality concerns to ensure our products perform to the highest standards

If the product does not perform as described on this datasheet, we will offer a refund or replacement. For full details of the Abpromise, please visit <https://www.abcam.com/abpromise> or contact our technical team.

Terms and conditions

- Guarantee only valid for products bought direct from Abcam or one of our authorized distributors