

Product datasheet

Anti-Hemoglobin subunit alpha antibody [EPR3608] - BSA and Azide free ab174536

Recombinant RabMAb

7 Images

Overview

Product name	Anti-Hemoglobin subunit alpha antibody [EPR3608] - BSA and Azide free
Description	Rabbit monoclonal [EPR3608] to Hemoglobin subunit alpha - BSA and Azide free
Host species	Rabbit
Tested applications	Suitable for: WB, IHC-P Unsuitable for: Flow Cyt or IP
Species reactivity	Reacts with: Mouse, Rat, Human
Immunogen	Synthetic peptide corresponding to Human Hemoglobin subunit alpha aa 50-150.
General notes	Ab174536 is the carrier-free version of ab92492 . This format is designed for use in antibody labeling, including fluorochromes, metal isotopes, oligonucleotides, enzymes.

Our [carrier-free formats](#) are supplied in a buffer free of BSA, sodium azide and glycerol for higher conjugation efficiency.

Use our [conjugation kits](#) for antibody conjugates that are ready-to-use in as little as 20 minutes with <1 minute hands-on-time and 100% antibody recovery: available for fluorescent dyes, HRP, biotin and gold.

ab174536 is compatible with the Maxpar® Antibody Labeling Kit from Fluidigm.

Maxpar® is a trademark of Fluidigm Canada Inc.

This product is a recombinant monoclonal antibody, which offers several advantages including:

- High batch-to-batch consistency and reproducibility
- Improved sensitivity and specificity
- Long-term security of supply
- Animal-free production

For more information [see here](#).

Our RabMAb® technology is a patented hybridoma-based technology for making rabbit monoclonal antibodies. For details on our patents, please refer to [RabMAb® patents](#).

Properties

Form	Liquid
Storage instructions	Shipped at 4°C. Store at +4°C. Do Not Freeze.
Storage buffer	Constituent: PBS
Carrier free	Yes
Purity	Protein A purified
Clonality	Monoclonal
Clone number	EPR3608
Isotype	IgG

Applications

Our [Abpromise guarantee](#) covers the use of **ab174536** in the following tested applications.

The application notes include recommended starting dilutions; optimal dilutions/concentrations should be determined by the end user.

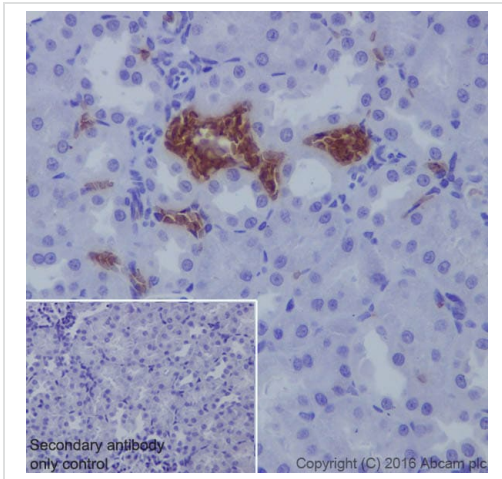
Application	Abreviews	Notes
WB		Use at an assay dependent concentration. Detects a band of approximately 14 kDa (predicted molecular weight: 15 kDa). Can be blocked with ab206105
IHC-P		Use at an assay dependent concentration. Perform heat mediated antigen retrieval via the pressure cooker method before commencing with IHC staining protocol. See IHC antigen retrieval protocols .

Application notes Is unsuitable for Flow Cyt or IP.

Target

Function	Involved in oxygen transport from the lung to the various peripheral tissues.
Tissue specificity	Red blood cells.
Involvement in disease	Heinz body anemias Alpha-thalassemia Alpha(0)-thalassemia is associated with non-immune hydrops fetalis, a generalized edema of the fetus with fluid accumulation in the body cavities due to non-immune causes. Non-immune hydrops fetalis is not a diagnosis in itself but a symptom, a feature of many genetic disorders, and the end-stage of a wide variety of disorders. Hemoglobin H disease
Sequence similarities	Belongs to the globin family.
Post-translational modifications	The initiator Met is not cleaved in variant Thionville and is acetylated.

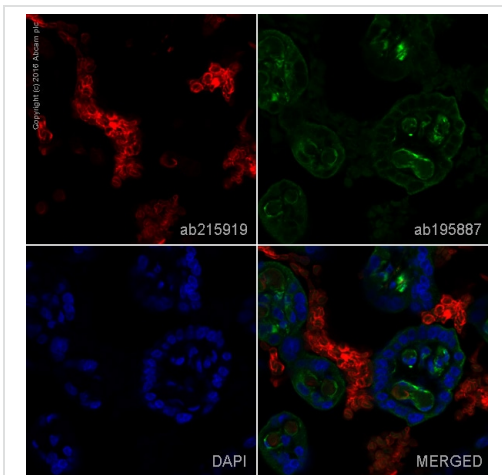
Images



Immunohistochemistry (Formalin/PFA-fixed paraffin-embedded sections) - Anti-Hemoglobin subunit alpha antibody [EPR3608] - BSA and Azide free (ab174536)

Immunohistochemistry (Formalin/PFA-fixed paraffin-embedded sections) analysis of rat kidney tissue labeling Hemoglobin subunit alpha antibody with purified [ab92492](#) at 1/500 dilution (1.4 µg/ml). Heat mediated antigen retrieval was performed using EDTA Buffer, PH9. [ab97051](#), a HRP-conjugated goat anti-rabbit IgG H&L was used as the secondary antibody at 1/500 dilution. Negative control using PBS instead of primary antibody. Counterstained with hematoxylin.

This data was developed using the same antibody clone in a different buffer formulation containing PBS, BSA, glycerol, and sodium azide ([ab92492](#)).



Immunohistochemistry (Formalin/PFA-fixed paraffin-embedded sections) - Anti-Hemoglobin subunit alpha antibody [EPR3608] - BSA and Azide free (ab174536)

Clone EPR3608 (ab174536) has been successfully conjugated by Abcam. This image was generated using Anti-Hemoglobin subunit alpha antibody [EPR3608] (Alexa Fluor® 647). Please refer to [ab215919](#) for protocol details.

IHC image of Hemoglobin subunit alpha staining in a section of formalin-fixed paraffin-embedded normal human placenta*.

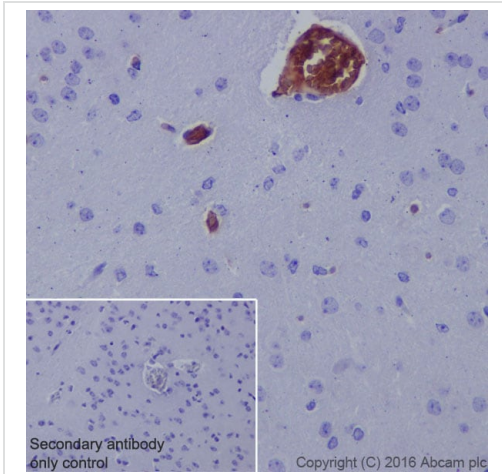
The section was pre-treated using heat mediated antigen retrieval with sodium citrate buffer (pH6) in a Dako Pascal pressure cooker using the standard factory-set regime. Non-specific protein-protein interactions were then blocked in TBS containing 0.025% (v/v) Triton X-100, 0.3M (w/v) glycine and 1% (w/v) BSA for 1h at room temperature. The section was then incubated overnight at +4°C in TBS containing 0.025% (v/v) Triton X-100 and 1% (w/v) BSA with [ab215919](#) at 1/100 dilution (shown in red) and counterstained using [ab195887](#), Mouse monoclonal to alpha Tubulin (Alexa Fluor® 488), at 1/250 dilution (shown in green). Nuclear DNA was labelled with DAPI (shown in blue). The section was then mounted using Fluoromount®.

Image was taken with a confocal microscope (Leica-Microsystems, TCS SP8).

For other IHC staining systems (automated and non-automated), customers should optimize variable parameters such as antigen retrieval conditions, antibody concentrations and incubation times.

*Tissue obtained from the Human Research Tissue Bank,

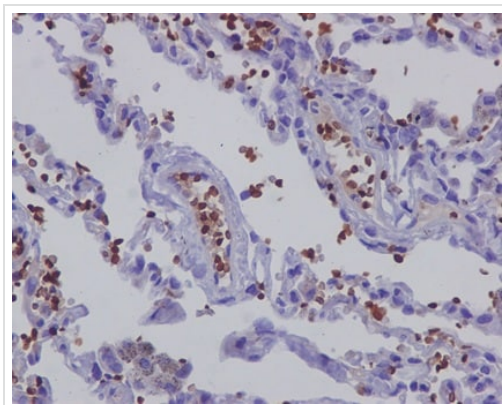
supported by the NIHR Cambridge Biomedical Research Centre.



Immunohistochemistry (Formalin/PFA-fixed paraffin-embedded sections) - Anti-Hemoglobin subunit alpha antibody [EPR3608] - BSA and Azide free (ab174536)

Immunohistochemistry (Formalin/PFA-fixed paraffin-embedded sections) analysis of mouse cerebral cortex tissue labeling Hemoglobin subunit alpha antibody with purified [ab92492](#) at 1/500 dilution (1.4 µg/ml). Heat mediated antigen retrieval was performed using EDTA Buffer, PH9. [ab97051](#), a HRP-conjugated goat anti-rabbit IgG H&L was used as the secondary antibody at 1/500 dilution. Negative control using PBS instead of primary antibody. Counterstained with hematoxylin.

This data was developed using the same antibody clone in a different buffer formulation containing PBS, BSA, glycerol, and sodium azide ([ab92492](#)).

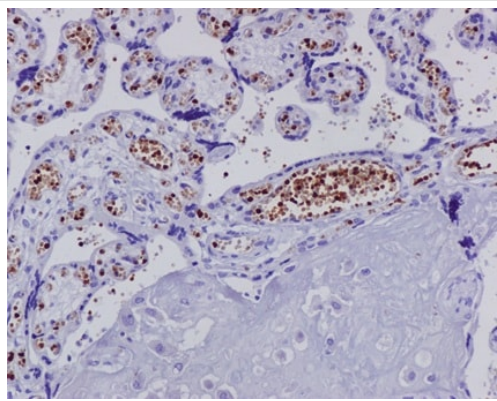


Immunohistochemistry (Formalin/PFA-fixed paraffin-embedded sections) - Anti-Hemoglobin subunit alpha antibody [EPR3608] - BSA and Azide free (ab174536)

Immunohistochemical analysis of paraffin embedded human placenta tissue labeling hemoglobin subunit alpha with unpurified [ab92492](#) at 0.051 µg/ml (1:40000 dilution).

This data was developed using the same antibody clone in a different buffer formulation containing PBS, BSA, glycerol, and sodium azide ([ab92492](#)).

Perform heat mediated antigen retrieval via the pressure cooker method before commencing with IHC staining protocol.

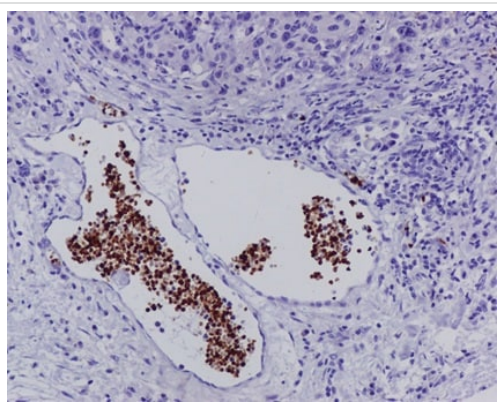


Immunohistochemistry (Formalin/PFA-fixed paraffin-embedded sections) - Anti-Hemoglobin subunit alpha antibody [EPR3608] - BSA and Azide free (ab174536)

Immunohistochemical analysis of paraffin embedded human placenta tissue labeling hemoglobin subunit alpha with unpurified [ab92492](#) at 0.051 µg/ml (1:40000 dilution).

This data was developed using the same antibody clone in a different buffer formulation containing PBS, BSA, glycerol, and sodium azide ([ab92492](#)).

Perform heat mediated antigen retrieval via the pressure cooker method before commencing with IHC staining protocol.

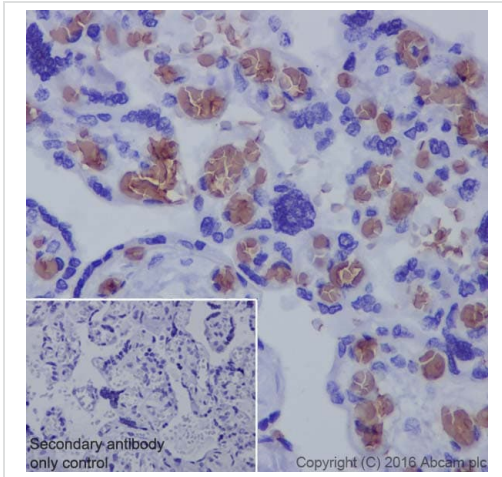


Immunohistochemistry (Formalin/PFA-fixed paraffin-embedded sections) - Anti-Hemoglobin subunit alpha antibody [EPR3608] - BSA and Azide free (ab174536)

This IHC data was generated using the same anti-hemoglobin subunit alpha antibody clone, EPR3608, in a different buffer formulation (cat# [ab924920](#)).

Immunohistochemical analysis of paraffin embedded human stomach cancer tissue labeling hemoglobin subunit alpha with unpurified [ab92492](#) at 0.051 µg/ml (1:40000 dilution).

Perform heat mediated antigen retrieval via the pressure cooker method before commencing with IHC staining protocol.



This IHC data was generated using the same anti-hemoglobin subunit alpha antibody clone, EPR3608, in a different buffer formulation (cat# [ab924920](#)).

Immunohistochemistry (Formalin/PFA-fixed paraffin-embedded sections) analysis of human placenta tissue labeling Hemoglobin subunit alpha antibody with purified [ab92492](#) at 1/500 dilution (1.4 µg/ml). Heat mediated antigen retrieval was performed using EDTA Buffer, PH9. [ab97051](#), a HRP-conjugated goat anti-rabbit IgG H&L was used as the secondary antibody at 1/500 dilution. Negative control using PBS instead of primary antibody. Counterstained with hematoxylin.

Immunohistochemistry (Formalin/PFA-fixed paraffin-embedded sections) - Anti-Hemoglobin subunit alpha antibody [EPR3608] - BSA and Azide free (ab174536)

Please note: All products are "FOR RESEARCH USE ONLY. NOT FOR USE IN DIAGNOSTIC PROCEDURES"

Our Abpromise to you: Quality guaranteed and expert technical support

- Replacement or refund for products not performing as stated on the datasheet
- Valid for 12 months from date of delivery
- Response to your inquiry within 24 hours
- We provide support in Chinese, English, French, German, Japanese and Spanish
- Extensive multi-media technical resources to help you
- We investigate all quality concerns to ensure our products perform to the highest standards

If the product does not perform as described on this datasheet, we will offer a refund or replacement. For full details of the Abpromise, please visit <https://www.abcam.com/abpromise> or contact our technical team.

Terms and conditions

- Guarantee only valid for products bought direct from Abcam or one of our authorized distributors