




Product datasheet

Anti-HEPACAM antibody ab236659

2 Images

Overview

<b>Product name</b>	Anti-HEPACAM antibody
<b>Description</b>	Rabbit polyclonal to HEPACAM
<b>Host species</b>	Rabbit
<b>Tested applications</b>	<b>Suitable for:</b> WB, ICC/IF
<b>Species reactivity</b>	<b>Reacts with:</b> Human <b>Predicted to work with:</b> Cow 
<b>Immunogen</b>	Recombinant fragment corresponding to Human HEPACAM aa 265-415. Sequence: PSKRKQKKLEKQNSLEYMDQNDDRLKPEADTLPRSG EQERKNPMALYLK DKDSPETEENPAPEPRRSATEPGPPGYSVSPAVPGRS PGLPIRSARRYPRS PARSPATGRTHSSPPRAPSSPGRSRSASRTLRTAGVH IIREQDEAGPVEI S  Database link: <a href="#">Q14CZ8</a>   <a href="#">Run BLAST with</a>  <a href="#">Run BLAST with</a>
<b>Positive control</b>	WB: MCF7 and HepG2 whole cell lysate. ICC/IF: MCF7 cells.

Properties

<b>Form</b>	Liquid
<b>Storage instructions</b>	Shipped at 4°C. Store at +4°C short term (1-2 weeks). Upon delivery aliquot. Store at -20°C long term. Avoid freeze / thaw cycle.
<b>Storage buffer</b>	pH: 7.4 Preservative: 0.03% Proclin Constituents: PBS, 50% Glycerol
<b>Purity</b>	Protein G purified
<b>Purification notes</b>	Purity >95%.
<b>Clonality</b>	Polyclonal
<b>Isotype</b>	IgG

## Applications

Our [Abpromise guarantee](#) covers the use of **ab236659** in the following tested applications.

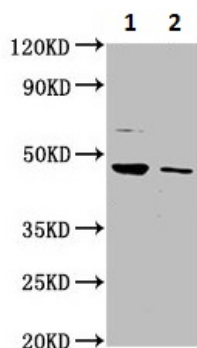
The application notes include recommended starting dilutions; optimal dilutions/concentrations should be determined by the end user.

Application	Abreviews	Notes
WB		1/500 - 1/5000.
ICC/IF		1/200 - 1/500.

## Target

<b>Function</b>	Involved in regulating cell motility and cell-matrix interactions. May inhibit cell growth through suppression of cell proliferation.
<b>Sequence similarities</b>	Contains 1 Ig-like C2-type (immunoglobulin-like) domain. Contains 1 Ig-like V-type (immunoglobulin-like) domain.
<b>Domain</b>	The cytoplasmic domain plays an important role in regulation of cell-matrix adhesion and cell motility.
<b>Post-translational modifications</b>	N-glycosylated.
<b>Cellular localization</b>	Cytoplasm. Membrane. In MCF7 breast carcinoma and hepatic Hep3B and HepG2 cell lines, localization of HEPACAM is cell density-dependent. In well spread cells, localized to punctate structures in the perinuclear membrane, cytoplasm, and at cell surface of protusions. In confluent cells, localized predominantly to the cytoplasmic membrane, particularly in areas of cell-cell contacts. Colocalizes with CDH1.

## Images



Western blot - Anti-HEPACAM antibody (ab236659)

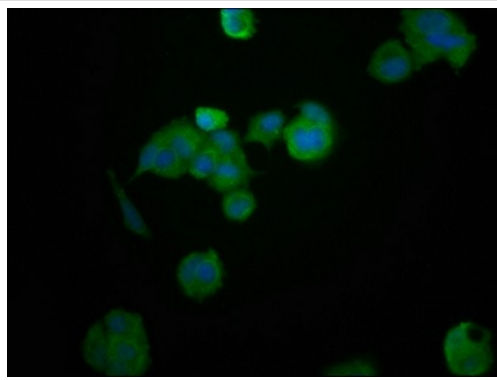
**All lanes** : Anti-HEPACAM antibody (ab236659) at 1/500 dilution

**Lane 1** : MCF7 (human breast adenocarcinoma cell line) whole cell lysate

**Lane 2** : HepG2 (human liver hepatocellular carcinoma cell line) whole cell lysate

### Secondary

**All lanes** : Goat polyclonal to rabbit IgG at 1/50000 dilution



Immunocytochemistry/ Immunofluorescence - Anti-HEPACAM antibody (ab236659)

MCF7 (human breast adenocarcinoma cell line) cells labeling HEPACAM (green) using ab236659 at 1/200 dilution in ICC/IF. Counterstained with DAPI (blue).

The cells were fixed in 4% formaldehyde, permeabilized using 0.2% Triton X-100 and blocked in 10% normal Goat Serum. The cells were then incubated with the antibody overnight at 4°C. The secondary antibody was Alexa Fluor 488-conjugated Goat Anti-Rabbit IgG (H+L).

**Please note:** All products are "FOR RESEARCH USE ONLY. NOT FOR USE IN DIAGNOSTIC PROCEDURES"

### Our Abpromise to you: Quality guaranteed and expert technical support

---

- Replacement or refund for products not performing as stated on the datasheet
- Valid for 12 months from date of delivery
- Response to your inquiry within 24 hours
- We provide support in Chinese, English, French, German, Japanese and Spanish
- Extensive multi-media technical resources to help you
- We investigate all quality concerns to ensure our products perform to the highest standards

If the product does not perform as described on this datasheet, we will offer a refund or replacement. For full details of the Abpromise, please visit <https://www.abcam.com/abpromise> or contact our technical team.

### Terms and conditions

---

- Guarantee only valid for products bought direct from Abcam or one of our authorized distributors