



Product datasheet

Anti-HHLA2 antibody ab214327

3 References 2 Images

Overview

Product name	Anti-HHLA2 antibody
Description	Rabbit Polyclonal to HHLA2
Host species	Rabbit
Tested applications	Suitable for: WB, IHC-P
Species reactivity	Reacts with: Human
Immunogen	<p>Synthetic peptide within Human HHLA2 aa 270-315 conjugated to keyhole limpet haemocyanin. The exact sequence is proprietary.</p> <p>Sequence:</p> <p>VLAYLSSSQNTIINESRFSWNKELINQSDFSMNLMDLN LSDSGEY</p> <p>Database link: Q9UM44</p> <p style="text-align: right;">  Run BLAST with  Run BLAST with </p>
Positive control	Human rectal carcinoma tissue.

Properties

Form	Liquid
Storage instructions	Shipped at 4°C. Store at +4°C short term (1-2 weeks). Upon delivery aliquot. Store at -20°C long term. Avoid freeze / thaw cycle.
Storage buffer	<p>Preservative: 0.09% Sodium azide</p> <p>Constituents: 1% BSA, 50% Glycerol</p>
Purity	Protein A purified
Clonality	Polyclonal
Isotype	IgG

Applications

Our [Abpromise guarantee](#) covers the use of **ab214327** in the following tested applications.

The application notes include recommended starting dilutions; optimal dilutions/concentrations should be determined by the end user.

Application	Abreviews	Notes
WB		1/500.
IHC-P		1/100 - 1/500.

Target

Tissue specificity

Expressed in colon, small intestine, lung and kidney.

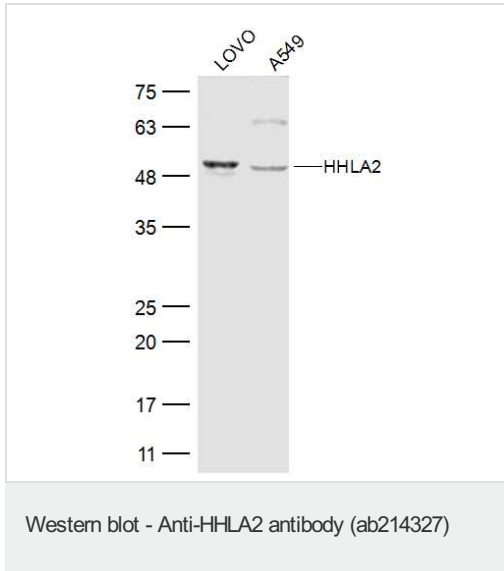
Sequence similarities

Contains 1 Ig-like C1-type (immunoglobulin-like) domain.
Contains 2 Ig-like V-type (immunoglobulin-like) domains.

Cellular localization

Membrane.

Images



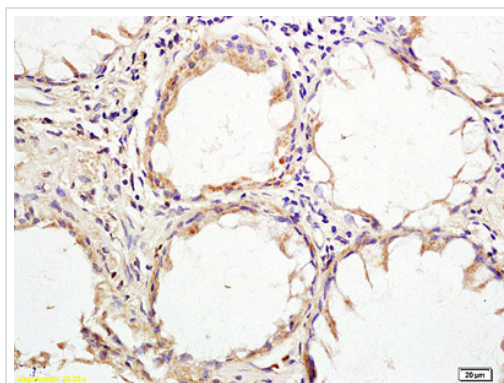
All lanes : Anti-HHLA2 antibody (ab214327) at 1/500 dilution

Lane 1 : Lovo cell lysates

Lane 2 : A549 cell lysates

Secondary

All lanes : Conjugated secondary antibody at 1/20000 dilution



Immunohistochemical analysis of formalin-fixed, paraffin-embedded human rectal carcinoma tissue labeling HHLA2 with ab214327 at 1/200 dilution followed by conjugation to the secondary antibody and DAB staining.

Immunohistochemistry (Formalin/PFA-fixed paraffin-embedded sections) - Anti-HHLA2 antibody (ab214327)

Please note: All products are "FOR RESEARCH USE ONLY. NOT FOR USE IN DIAGNOSTIC PROCEDURES"

Our Abpromise to you: Quality guaranteed and expert technical support

- Replacement or refund for products not performing as stated on the datasheet
- Valid for 12 months from date of delivery
- Response to your inquiry within 24 hours

- We provide support in Chinese, English, French, German, Japanese and Spanish
- Extensive multi-media technical resources to help you
- We investigate all quality concerns to ensure our products perform to the highest standards

If the product does not perform as described on this datasheet, we will offer a refund or replacement. For full details of the Abpromise, please visit <https://www.abcam.com/abpromise> or contact our technical team.

Terms and conditions

- Guarantee only valid for products bought direct from Abcam or one of our authorized distributors