

Product datasheet

Anti-HHLA2 antibody [EPR23563-120] ab254367

Recombinant RabMAb

3 Images

Overview

Product name	Anti-HHLA2 antibody [EPR23563-120]
Description	Rabbit monoclonal [EPR23563-120] to HHLA2
Host species	Rabbit
Tested applications	Suitable for: Flow Cyt Unsuitable for: ICC, IHC-P, IP or WB
Species reactivity	Reacts with: Human
Immunogen	Recombinant fragment within Human HHLA2 aa 1-350. The exact sequence is proprietary. Database link: Q9UM44
Positive control	Flow cyt: A-204 cells; HEK-293T cells transfected with Myc-His tagged HHLA2 overexpression vector.
General notes	<p>This product is a recombinant monoclonal antibody, which offers several advantages including:</p> <ul style="list-style-type: none"> - High batch-to-batch consistency and reproducibility - Improved sensitivity and specificity - Long-term security of supply - Animal-free production <p>For more information see here.</p> <p>Our RabMAb[®] technology is a patented hybridoma-based technology for making rabbit monoclonal antibodies. For details on our patents, please refer to RabMAb[®] patents.</p> <p>Reproducibility is key to advancing scientific discovery and accelerating scientists' next breakthrough.</p> <p>Abcam is leading the way with our range of recombinant antibodies, knockout-validated antibodies and knockout cell lines, all of which support improved reproducibility.</p> <p>We are also planning to innovate the way in which we present recommended applications and species on our product datasheets, so that only applications & species that have been tested in our own labs, our suppliers or by selected trusted collaborators are covered by our Abpromise[™] guarantee.</p> <p>In preparation for this, we have started to update the applications & species that this product is Abpromise guaranteed for.</p> <p>We are also updating the applications & species that this product has been "predicted to work with," however this information is not covered by our Abpromise guarantee.</p>

Applications & species from publications and Abreviews that have not been tested in our own labs or in those of our suppliers are not covered by the Abpromise guarantee.

Please check that this product meets your needs before purchasing. If you have any questions, special requirements or concerns, please send us an inquiry and/or contact our Support team ahead of purchase. Recommended alternatives for this product can be found below, as well as customer reviews and Q&As.

Properties

Form	Liquid
Storage instructions	Shipped at 4°C. Store at +4°C short term (1-2 weeks). Upon delivery aliquot. Store at -20°C long term. Avoid freeze / thaw cycle.
Storage buffer	Preservative: 0.01% Sodium azide Constituents: 59.94% PBS, 40% Glycerol, 0.05% BSA
Purity	Protein A purified
Clonality	Monoclonal
Clone number	EPR23563-120
Isotype	IgG

Applications

Our [Abpromise guarantee](#) covers the use of **ab254367** in the following tested applications.

The application notes include recommended starting dilutions; optimal dilutions/concentrations should be determined by the end user.

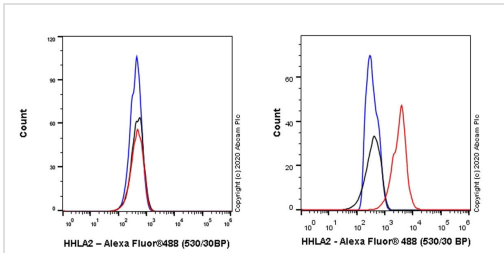
Application	Abreviews	Notes
Flow Cyt		1/500.

Application notes Is unsuitable for ICC,IHC-P,IP or WB.

Target

Tissue specificity	Expressed in colon, small intestine, lung and kidney.
Sequence similarities	Contains 1 Ig-like C1-type (immunoglobulin-like) domain. Contains 2 Ig-like V-type (immunoglobulin-like) domains.
Cellular localization	Membrane.

Images



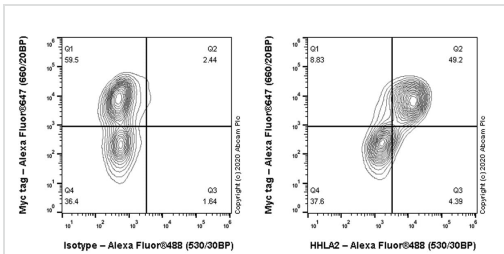
Flow Cytometry - Anti-HHLA2 antibody [EPR23563-120] (ab254367)

Flow cytometric analysis of HeLa (human cervix adenocarcinoma epithelial cell line, left) / A-204 (human muscle rhabdomyosarcoma, right) cells labelling HHLA2 with ab254367 at 1/500 dilution (Red) compared with a Rabbit monoclonal IgG (ab172730) isotype control (Black) and an unlabelled control (cells without incubation with primary antibody and secondary antibody) (Blue).

Goat anti rabbit IgG (Alexa Fluor® 488, ab150077) at 1/2000 dilution was used as the secondary antibody.

Negative control: Hela (PMID:23716685).

Gated on viable cells.



Flow Cytometry - Anti-HHLA2 antibody [EPR23563-120] (ab254367)

Flow cytometric analysis of 2% paraformaldehyde fixed, 0.1% Tween-20 permeabilized HEK-293T (Human embryonic kidney epithelial cell line) cells transfected with Myc-His tagged HHLA2 overexpression vector labelling HHLA2 with ab254367 at 1/500 dilution (Right) compared with a Rabbit monoclonal IgG (ab172730) isotype control (Left).

A Goat anti rabbit IgG (Alexa Fluor® 488, ab150077) at 1/2000 dilution was used as the secondary antibody.

Cells were surface stained with rabbit IgG or ab254367. Then fixed with 2% PFA for 10min followed by intracellularly stained with anti-myc tag conjugated to Alexa Fluor®647.

Why choose a recombinant antibody?

Research with confidence
Consistent and reproducible results

Long-term and scalable supply
Recombinant technology

Success from the first experiment
Confirmed specificity

Ethical standards compliant
Animal-free production

Anti-HHLA2 antibody [EPR23563-120] (ab254367)

Please note: All products are "FOR RESEARCH USE ONLY. NOT FOR USE IN DIAGNOSTIC PROCEDURES"

Our Abpromise to you: Quality guaranteed and expert technical support

- Replacement or refund for products not performing as stated on the datasheet
- Valid for 12 months from date of delivery
- Response to your inquiry within 24 hours

- We provide support in Chinese, English, French, German, Japanese and Spanish
- Extensive multi-media technical resources to help you
- We investigate all quality concerns to ensure our products perform to the highest standards

If the product does not perform as described on this datasheet, we will offer a refund or replacement. For full details of the Abpromise, please visit <https://www.abcam.com/abpromise> or contact our technical team.

Terms and conditions

- Guarantee only valid for products bought direct from Abcam or one of our authorized distributors