




Product datasheet

Anti-HIC1 antibody ab235037

1 References 2 Images

Overview

Product name	Anti-HIC1 antibody
Description	Rabbit polyclonal to HIC1
Host species	Rabbit
Tested applications	Suitable for: IHC-P
Species reactivity	Reacts with: Human Predicted to work with: Mouse 
Immunogen	<p>Recombinant fragment corresponding to Human HIC1 aa 297-418. Sequence:</p> <p>LEEAAPPSPDFRGGSGSPGPEPPGRPDPGPSLLYRWMKH EPGLGSYGDELG RERGSPSERCEERGGDAAVSPGGPPLGLAPPPRYPGSL DGPAGGDDYKSSSEETGSSSEDPSPPGGHLEG</p> <p>Database link: Q14526</p> <p style="text-align: right;"> Run BLAST with  Run BLAST with</p>
Positive control	IHC-P: Human endometrial cancer and breast cancer tissue.
General notes	<p>Reproducibility is key to advancing scientific discovery and accelerating scientists' next breakthrough.</p> <p>Abcam is leading the way with our range of recombinant antibodies, knockout-validated antibodies and knockout cell lines, all of which support improved reproducibility.</p> <p>We are also planning to innovate the way in which we present recommended applications and species on our product datasheets, so that only applications & species that have been tested in our own labs, our suppliers or by selected trusted collaborators are covered by our Abpromise™ guarantee.</p> <p>In preparation for this, we have started to update the applications & species that this product is Abpromise guaranteed for.</p> <p>We are also updating the applications & species that this product has been “predicted to work with,” however this information is not covered by our Abpromise guarantee.</p> <p>Applications & species from publications and Abreviews that have not been tested in our own labs or in those of our suppliers are not covered by the Abpromise guarantee.</p> <p>Please check that this product meets your needs before purchasing. If you have any questions, special requirements or concerns, please send us an inquiry and/or contact our Support team</p>

ahead of purchase. Recommended alternatives for this product can be found below, as well as customer reviews and Q&As.

Properties

Form	Liquid
Storage instructions	Shipped at 4°C. Store at +4°C short term (1-2 weeks). Upon delivery aliquot. Store at -20°C long term. Avoid freeze / thaw cycle.
Storage buffer	pH: 7.40 Constituents: PBS, 50% Glycerol (glycerin, glycerine), 0.03% Proclin 300
Purity	Protein G purified
Purification notes	Purity >95%.
Clonality	Polyclonal
Isotype	IgG

Applications

Our [Abpromise guarantee](#) covers the use of **ab235037** in the following tested applications.

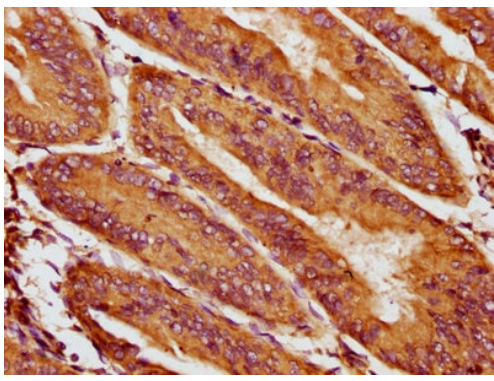
The application notes include recommended starting dilutions; optimal dilutions/concentrations should be determined by the end user.

Application	Abreviews	Notes
IHC-P		1/200 - 1/500.

Target

Function	Transcriptional repressor. May act as a tumor suppressor. May be involved in development of head, face, limbs and ventral body wall.
Tissue specificity	Ubiquitously expressed with highest levels found in lung, colon, prostate, thymus, testis and ovary. Expression is absent or decreased in many tumor cells.
Sequence similarities	Belongs to the krueppel C2H2-type zinc-finger protein family. Hic subfamily. Contains 1 BTB (POZ) domain. Contains 5 C2H2-type zinc fingers.
Post-translational modifications	Acetylated on several residues, including Lys-333. Lys-333 is deacetylated by SIRT1. Sumoylated on Lys-333 by a PIAS family member, which positively regulates transcriptional repression activity and is enhanced by HDAC4.
Cellular localization	Nucleus.

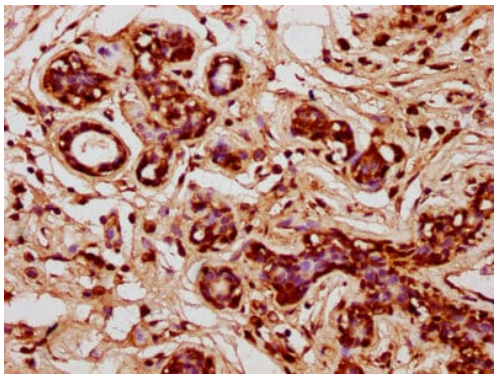
Images



Immunohistochemistry (Formalin/PFA-fixed paraffin-embedded sections) - Anti-HIC1 antibody (ab235037)

Paraffin-embedded human endometrial cancer tissue stained for HIC1 using ab235037 at 1/400 dilution in immunohistochemical analysis.

After dewaxing and hydration, antigen retrieval was mediated by high pressure in a citrate buffer (pH 6.0). Section was blocked with 10% normal goat serum for 30 minutes at room temperature. Then primary antibody (1% BSA) was incubated at 4°C overnight. The primary is detected by a biotinylated secondary antibody and visualized using an HRP conjugated SP system.



Immunohistochemistry (Formalin/PFA-fixed paraffin-embedded sections) - Anti-HIC1 antibody (ab235037)

Paraffin-embedded human breast cancer tissue stained for HIC1 using ab235037 at 1/400 dilution in immunohistochemical analysis.

After dewaxing and hydration, antigen retrieval was mediated by high pressure in a citrate buffer (pH 6.0). Section was blocked with 10% normal goat serum for 30 minutes at room temperature. Then primary antibody (1% BSA) was incubated at 4°C overnight. The primary is detected by a biotinylated secondary antibody and visualized using an HRP conjugated SP system.

Please note: All products are "FOR RESEARCH USE ONLY. NOT FOR USE IN DIAGNOSTIC PROCEDURES"

Our Abpromise to you: Quality guaranteed and expert technical support

- Replacement or refund for products not performing as stated on the datasheet
- Valid for 12 months from date of delivery
- Response to your inquiry within 24 hours
- We provide support in Chinese, English, French, German, Japanese and Spanish
- Extensive multi-media technical resources to help you
- We investigate all quality concerns to ensure our products perform to the highest standards

If the product does not perform as described on this datasheet, we will offer a refund or replacement. For full details of the Abpromise, please visit <https://www.abcam.com/abpromise> or contact our technical team.

Terms and conditions

- Guarantee only valid for products bought direct from Abcam or one of our authorized distributors