

## Product datasheet

# Anti-HIF1AN/FIH-1 antibody ab187524

6 References 4 Images

### Overview

---

<b>Product name</b>	Anti-HIF1AN/FIH-1 antibody
<b>Description</b>	Rabbit polyclonal to HIF1AN/FIH-1
<b>Host species</b>	Rabbit
<b>Tested applications</b>	<b>Suitable for:</b> ICC/IF, WB, IHC-P
<b>Species reactivity</b>	<b>Reacts with:</b> Mouse, Rat, Human
<b>Immunogen</b>	Recombinant full length protein corresponding to Human HIF1AN/FIH-1. Database link: <a href="#">Q9NWT6</a>
<b>Positive control</b>	MCF7, K562, U937, 293T cell lysates; mouse heart;and skeletal muscle lysates.
<b>General notes</b>	<p>Previously labelled as HIF1AN.</p> <p>Reproducibility is key to advancing scientific discovery and accelerating scientists' next breakthrough.</p> <p>Abcam is leading the way with our range of recombinant antibodies, knockout-validated antibodies and knockout cell lines, all of which support improved reproducibility.</p> <p>We are also planning to innovate the way in which we present recommended applications and species on our product datasheets, so that only applications &amp; species that have been tested in our own labs, our suppliers or by selected trusted collaborators are covered by our Abpromise™ guarantee.</p> <p>In preparation for this, we have started to update the applications &amp; species that this product is Abpromise guaranteed for.</p> <p>We are also updating the applications &amp; species that this product has been “predicted to work with,” however this information is not covered by our Abpromise guarantee.</p> <p>Applications &amp; species from publications and Abreviews that have not been tested in our own labs or in those of our suppliers are not covered by the Abpromise guarantee.</p> <p>Please check that this product meets your needs before purchasing. If you have any questions, special requirements or concerns, please send us an inquiry and/or contact our Support team ahead of purchase. Recommended alternatives for this product can be found below, as well as customer reviews and Q&amp;As.</p>

### Properties

---

<b>Form</b>	Liquid
-------------	--------

<b>Storage instructions</b>	Shipped at 4°C. Store at +4°C short term (1-2 weeks). Upon delivery aliquot. Store at -20°C long term. Avoid freeze / thaw cycle.
<b>Storage buffer</b>	pH: 7.30 Preservative: 0.02% Sodium azide Constituents: 49% PBS, 50% Glycerol
<b>Purity</b>	Immunogen affinity purified
<b>Clonality</b>	Polyclonal
<b>Isotype</b>	IgG

## Applications

Our [Abpromise guarantee](#) covers the use of **ab187524** in the following tested applications.

The application notes include recommended starting dilutions; optimal dilutions/concentrations should be determined by the end user.

Application	Abreviews	Notes
ICC/IF		Use at an assay dependent concentration.
WB		1/500 - 1/2000. Predicted molecular weight: 40 kDa.
IHC-P		1/50 - 1/200.

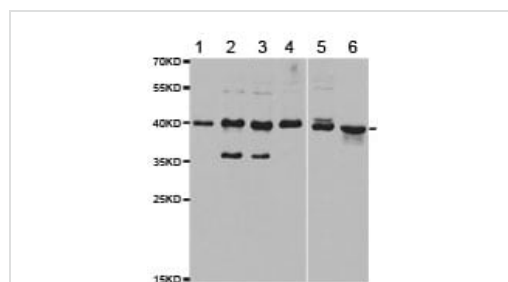
## Target

**Function** Hydroxylates HIF-1 alpha at 'Asp-803' in the C-terminal transactivation domain (CAD). Functions as an oxygen sensor and, under normoxic conditions, the hydroxylation prevents interaction of HIF-1 with transcriptional coactivators including Cbp/p300-interacting transactivator. Involved in transcriptional repression through interaction with HIF1A, VHL and histone deacetylases.

**Sequence similarities** Contains 1 JmjC domain.

**Cellular localization** Nucleus.

## Images



Western blot - Anti-HIF1AN/FIH-1 antibody (ab187524)

**All lanes** : Anti-HIF1AN/FIH-1 antibody (ab187524) at 1/500 dilution

**Lane 1** : MCF7 cell lysate

**Lane 2** : K562 cell lysate

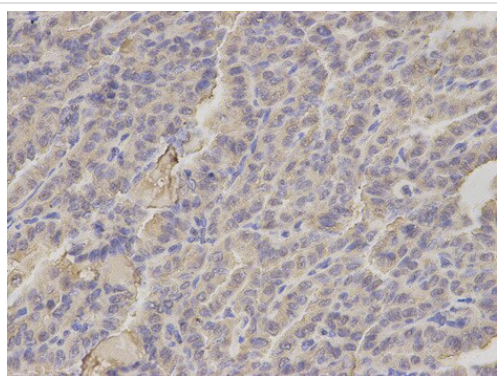
**Lane 3** : U937 lysate

**Lane 4** : 293T cell lysate

**Lane 5** : Mouse heart lysate

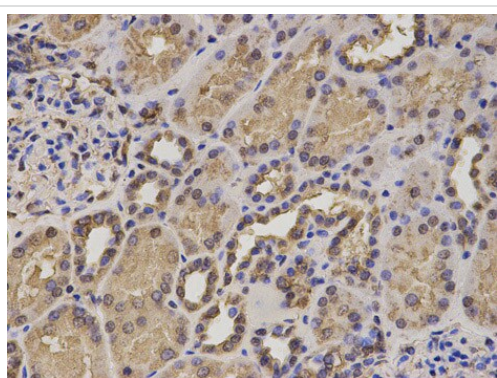
**Lane 6** : Mouse skeletal muscle lysate

**Predicted band size:** 40 kDa



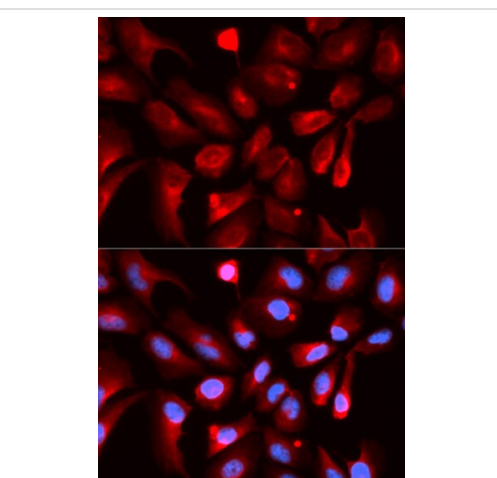
Immunohistochemistry (Formalin/PFA-fixed paraffin-embedded sections) analysis of human thyroid cancer tissue labelling HIF1AN/FIH-1 with ab187524 at 1/200. Magnification: 400x.

Immunohistochemistry (Formalin/PFA-fixed paraffin-embedded sections) - Anti-HIF1AN/FIH-1 antibody (ab187524)



Immunohistochemistry (Formalin/PFA-fixed paraffin-embedded sections) analysis of human kidney tissue labelling HIF1AN/FIH-1 with ab187524 at 1/200. Magnification: 400x.

Immunohistochemistry (Formalin/PFA-fixed paraffin-embedded sections) - Anti-HIF1AN/FIH-1 antibody (ab187524)



Immunocytochemistry/Immunofluorescence analysis of U2OS cells using ab187524. Blue DAPI for nuclear staining.

Immunocytochemistry/ Immunofluorescence - Anti-HIF1AN/FIH-1 antibody (ab187524)

**Please note:** All products are "FOR RESEARCH USE ONLY. NOT FOR USE IN DIAGNOSTIC PROCEDURES"

### **Our Abpromise to you: Quality guaranteed and expert technical support**

---

- Replacement or refund for products not performing as stated on the datasheet
- Valid for 12 months from date of delivery
- Response to your inquiry within 24 hours
  
- We provide support in Chinese, English, French, German, Japanese and Spanish
- Extensive multi-media technical resources to help you
- We investigate all quality concerns to ensure our products perform to the highest standards

If the product does not perform as described on this datasheet, we will offer a refund or replacement. For full details of the Abpromise, please visit <https://www.abcam.com/abpromise> or contact our technical team.

### **Terms and conditions**

---

- Guarantee only valid for products bought direct from Abcam or one of our authorized distributors