

Product datasheet

Anti-HIRIP3 antibody [2415C2α] ab54375

1 Image

Overview

<b>Product name</b>	Anti-HIRIP3 antibody [2415C2a]
<b>Description</b>	Mouse monoclonal [2415C2a] to HIRIP3
<b>Host species</b>	Mouse
<b>Tested applications</b>	<b>Suitable for:</b> WB, Dot blot
<b>Species reactivity</b>	<b>Reacts with:</b> Human
<b>Immunogen</b>	HIRIP3 recombinant fragment (Human)

Properties

<b>Form</b>	Liquid
<b>Storage instructions</b>	Shipped at 4°C. Store at +4°C short term (1-2 weeks). Upon delivery aliquot. Store at -20°C long term.
<b>Storage buffer</b>	pH: 7.40 Preservative: 0.05% Sodium azide Constituents: 1% BSA, 0.03% Potassium phosphate, 0.812% Sodium chloride, 0.1312% Sodium phosphate, 0.0225% Potassium chloride, PBS
<b>Purity</b>	Protein G purified
<b>Clonality</b>	Monoclonal
<b>Clone number</b>	2415C2a
<b>Isotype</b>	IgG1

Applications

Our [Abpromise guarantee](#) covers the use of **ab54375** in the following tested applications.

The application notes include recommended starting dilutions; optimal dilutions/concentrations should be determined by the end user.

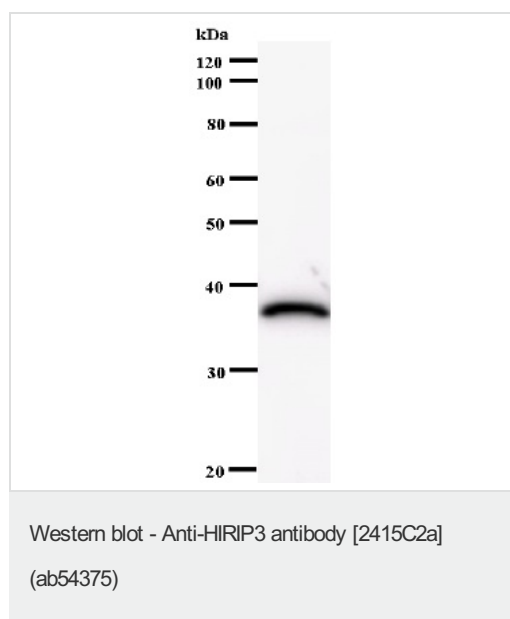
Application	Abreviews	Notes
WB		Use at an assay dependent dilution. Detects a band of approximately 37 kDa (predicted molecular weight: 62 kDa).

Application	Abreviews	Notes
Dot blot		Use at an assay dependent dilution.

## Target

<b>Function</b>	May play a role in chromatin function and histone metabolism via its interaction with HIRA and histones.
<b>Tissue specificity</b>	Widely expressed. Isoform 1 is predominant in skeletal muscle. Isoform 2 is predominant in liver and heart.
<b>Post-translational modifications</b>	Phosphorylated by CK2.
<b>Cellular localization</b>	Nucleus. Nuclear throughout the cell cycle and is excluded from condensed chromatin during mitosis.

## Images



Anti-HIRIP3 antibody [2415C2a] (ab54375) + immunised recombinant protein

**Predicted band size:** 62 kDa

**Observed band size:** 37 kDa

[why is the actual band size different from the predicted?](#)

**Please note:** All products are "FOR RESEARCH USE ONLY AND ARE NOT INTENDED FOR DIAGNOSTIC OR THERAPEUTIC USE"

## Our Promise to you: Quality guaranteed and expert technical support

- Replacement or refund for products not performing as stated on the datasheet
- Valid for 12 months from date of delivery
- Response to your inquiry within 24 hours
- We provide support in Chinese, English, French, German, Japanese and Spanish
- Extensive multi-media technical resources to help you

- We investigate all quality concerns to ensure our products perform to the highest standards

If the product does not perform as described on this datasheet, we will offer a refund or replacement. For full details of the Abpromise, please visit <https://www.abcam.com/abpromise> or contact our technical team.

### **Terms and conditions**

---

- Guarantee only valid for products bought direct from Abcam or one of our authorized distributors