

## Product datasheet

# Histone Acetyltransferase Activity Assay Kit (Fluorometric) ab204709

[3 Images](#)

### Overview

<b>Product name</b>	Histone Acetyltransferase Activity Assay Kit (Fluorometric)
<b>Detection method</b>	Fluorescent
<b>Sample type</b>	Nuclear Extracts, Purified protein
<b>Assay type</b>	Enzyme activity
<b>Species reactivity</b>	<b>Reacts with:</b> Mammals, Other species
<b>Product overview</b>	Histone Acetyltransferase Activity Assay Kit (Fluorometric) (ab204709) utilizes Acetyl CoA and H3 histone peptide as substrates. In this assay, HAT enzyme catalyzes the transfer of acetyl groups from AcetylCoA to the histone peptide, thereby generating two products - acetylated peptide and CoA-SH. The CoA-SH reacts with the developer to generate a product that is detected fluorometrically at Ex/Em = 535/587 nm. The assay can detect HAT activity as low as 6 mU in a variety of samples.
<b>Notes</b>	Histone Acetyltransferases (HATs) are enzymes that acetylate histone substrates resulting in important regulatory effects on chromatin structure and assembly, and gene transcription. Modifications of these proteins by HATs play an important role in the control of gene expression, and their dysregulation has been linked to cancer, neurodegeneration, and other diseases.
<b>Platform</b>	Microplate reader

### Properties

**Storage instructions** Store at -80°C. Please refer to protocols.

Components	100 tests
Acetyl CoA (Lyophilized)	1 vial
CoA Standard (Lyophilized)	1 vial
Developer	1 x 100µl
H3 Peptide (Lyophilized)	1 vial

Components	100 tests
HAT Assay Buffer	1 x 25ml
PicoProbe	1 x 200µl
Positive Control (HeLa Nuclear Extract)	1 x 40µl
Substrate Mix (Lyophilized)	1 vial

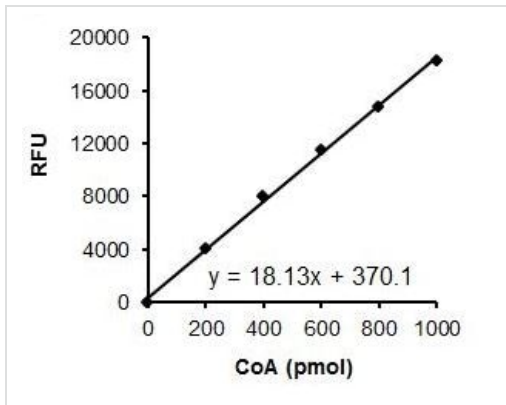
**Relevance**

Histone acetyltransferases (HAT) are enzymes that acetylate conserved lysine amino acids on histone proteins. They have been implicated to play a crucial role in various cellular functions, such as gene transcription, differentiation, and proliferation.

**Cellular localization**

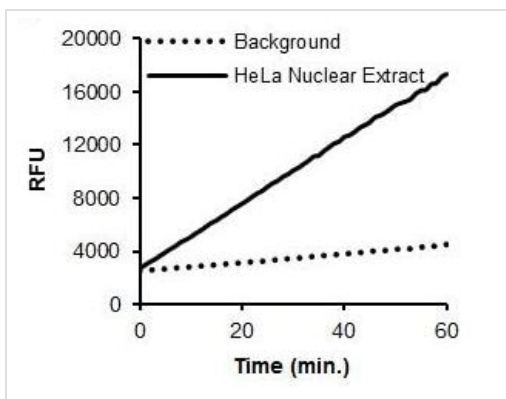
Cytoplasmic and Nuclear. Note=Nuclear in S-phase cells and cytoplasmic.

**Images**



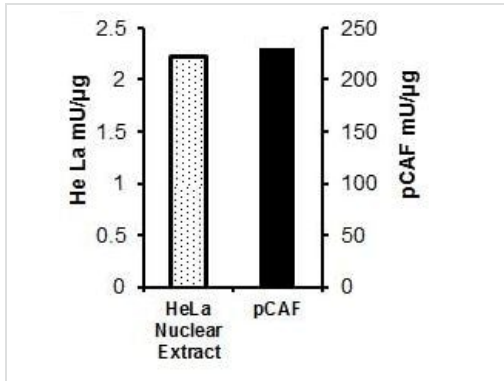
Typical CoA Standard calibration curve.

Histone Acetyltransferase Activity Assay Kit  
(Fluorometric) (ab204709)



HAT Activity in HeLa Nuclear Extract.

Histone Acetyltransferase Activity Assay Kit  
(Fluorometric) (ab204709)



Specific Activity of HeLa Nuclear Extract and purified recombinant pCAF.

Histone Acetyltransferase Activity Assay Kit  
(Fluorometric) (ab204709)

**Please note:** All products are "FOR RESEARCH USE ONLY. NOT FOR USE IN DIAGNOSTIC PROCEDURES"

### Our Abpromise to you: Quality guaranteed and expert technical support

- Replacement or refund for products not performing as stated on the datasheet
- Valid for 12 months from date of delivery
- Response to your inquiry within 24 hours
- We provide support in Chinese, English, French, German, Japanese and Spanish
- Extensive multi-media technical resources to help you
- We investigate all quality concerns to ensure our products perform to the highest standards

If the product does not perform as described on this datasheet, we will offer a refund or replacement. For full details of the Abpromise, please visit <https://www.abcam.com/abpromise> or contact our technical team.

### Terms and conditions

- Guarantee only valid for products bought direct from Abcam or one of our authorized distributors