

Product datasheet

Anti-HIV1 Reverse Transcriptase antibody ab63911

[5 References](#) [2 Images](#)

Overview

Product name	Anti-HIV1 Reverse Transcriptase antibody
Description	Rabbit polyclonal to HIV1 Reverse Transcriptase
Host species	Rabbit
Tested applications	Suitable for: WB, ELISA
Species reactivity	Reacts with: Other species
Immunogen	HIV1 Reverse Transcriptase, over-expressed as recombinant protein in E.coli
Positive control	Extract of MT4 cells infected with HIV1 (LAI strain).
General notes	<p>The Life Science industry has been in the grips of a reproducibility crisis for a number of years. Abcam is leading the way in addressing this with our range of recombinant monoclonal antibodies and knockout edited cell lines for gold-standard validation. Please check that this product meets your needs before purchasing.</p> <p>If you have any questions, special requirements or concerns, please send us an inquiry and/or contact our Support team ahead of purchase. Recommended alternatives for this product can be found below, along with publications, customer reviews and Q&As</p>

Properties

Form	Liquid
Storage instructions	Shipped at 4°C. Upon delivery aliquot and store at -20°C. Avoid freeze / thaw cycles.
Storage buffer	pH: 6 Preservative: 0.09% Sodium azide Constituent: Whole serum
Purity	Whole antiserum
Clonality	Polyclonal
Isotype	IgG

Applications

The Abpromise guarantee Our [Abpromise guarantee](#) covers the use of ab63911 in the following tested applications. The application notes include recommended starting dilutions; optimal dilutions/concentrations should be determined by the end user.

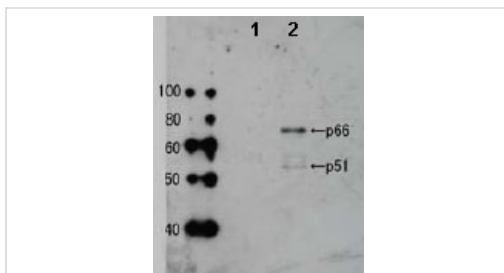
Application	Abreviews	Notes
WB		1/2500. Detects a band of approximately 51, 66 kDa.
ELISA		Use at an assay dependent dilution.

Target

Relevance

HIV1 Reverse Transcriptase is an RNA-dependent DNA polymerase of HIV1 (AIDS virus), subtype B origin. It is responsible for the production of a double stranded DNA copy of the single stranded RNA genome that is contained in the HIV1 virus particle and primed by the host cell lysine-tRNA which partly unfolds and anneals to the 5' end of the viral genomic RNA. This is extended by the polymerase function of RT to give a DNA-RNA hybrid. It also has RNaseH activity which degrades the RNA component of this hybrid once it has been copied.

Images



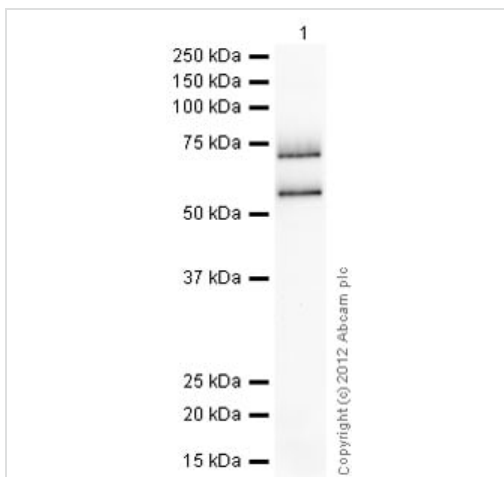
Western blot - Anti-HIV1 Reverse Transcriptase antibody (ab63911)

All lanes : Anti-HIV1 Reverse Transcriptase antibody (ab63911) at 1/2500 dilution

Lane 1 : Extract of MT4 cells

Lane 2 : Extract of MT4 cells infected with HIV-1 (LAI strain)

Observed band size: 51,66 kDa



Western blot - Anti-HIV1 Reverse Transcriptase antibody (ab63911)

Please note: All products are "FOR RESEARCH USE ONLY. NOT FOR USE IN DIAGNOSTIC PROCEDURES"

Our Abpromise to you: Quality guaranteed and expert technical support

- Replacement or refund for products not performing as stated on the datasheet
- Valid for 12 months from date of delivery
- Response to your inquiry within 24 hours

- We provide support in Chinese, English, French, German, Japanese and Spanish
- Extensive multi-media technical resources to help you
- We investigate all quality concerns to ensure our products perform to the highest standards

If the product does not perform as described on this datasheet, we will offer a refund or replacement. For full details of the Abpromise, please visit <https://www.abcam.com/abpromise> or contact our technical team.

Terms and conditions

- Guarantee only valid for products bought direct from Abcam or one of our authorized distributors