

## Product datasheet

# Anti-HIV1 tat antibody [N3] ab63957

★★★★☆ 2 Abreviews 11 References 2 Images

### Overview

---

<b>Product name</b>	Anti-HIV1 tat antibody [N3]
<b>Description</b>	Mouse monoclonal [N3] to HIV1 tat
<b>Host species</b>	Mouse
<b>Tested applications</b>	<b>Suitable for:</b> IHC-P, ICC, ELISA, WB
<b>Species reactivity</b>	<b>Reacts with:</b> Other species
<b>Immunogen</b>	Recombinant full length protein corresponding to HIV1 tat. (Recombinant Tat protein of HIV-1 HXB2, purified from E. coli)
<b>Epitope</b>	Mapped to amino acids 47-58 (YGRKKRRQRRRA – B subtype a.a. consensus, Tat basic domain, Swissprot ID: P04608)
<b>Positive control</b>	<div style="border: 1px solid #ccc; padding: 5px; text-align: center;"> <a href="#">Purchase matching WB positive control: Recombinant HIV tat protein &gt;</a> </div>
<b>General notes</b>	Also known as clone 02-010.

### Properties

---

<b>Form</b>	Liquid
<b>Storage instructions</b>	Shipped at 4°C. Store at +4°C short term (1-2 weeks). Upon delivery aliquot. Store at -20°C or -80°C. Avoid freeze / thaw cycle.
<b>Storage buffer</b>	Preservative: 0.1% Sodium Azide Constituents: PBS, pH 7.4
<b>Purity</b>	Protein G purified
<b>Clonality</b>	Monoclonal
<b>Clone number</b>	N3
<b>Isotype</b>	IgM

### Applications

---

Our [Abpromise guarantee](#) covers the use of **ab63957** in the following tested applications.

The application notes include recommended starting dilutions; optimal dilutions/concentrations should be determined by the end user.

Application	Abreviews	Notes
IHC-P	★★★★☆	1/200. Perform heat mediated antigen retrieval before commencing with IHC staining protocol.
ICC		Use at an assay dependent concentration. PubMed: 25653431
ELISA		Use at an assay dependent concentration.
WB	★☆☆☆☆	Use a concentration of 2 µg/ml. Detects a band of approximately 1 kDa.

## Target

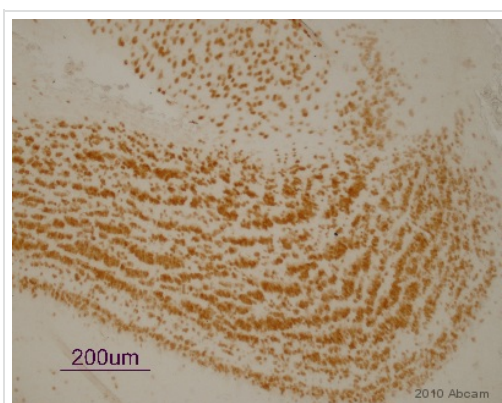
### Relevance

HIV1 tat (Transactivator of Transcription) protein is a pleiotropic factor that induces a broad range of biological effects in numerous cell types. At the HIV promoter, tat is a powerful transactivator of gene expression which acts by inducing chromatin remodeling and by recruiting elongation-competent transcriptional complexes on to the viral LTR.

### Cellular localization

Nuclear. Upon stimulation with EDN1, it is exported from the nucleus to the perinuclear region.

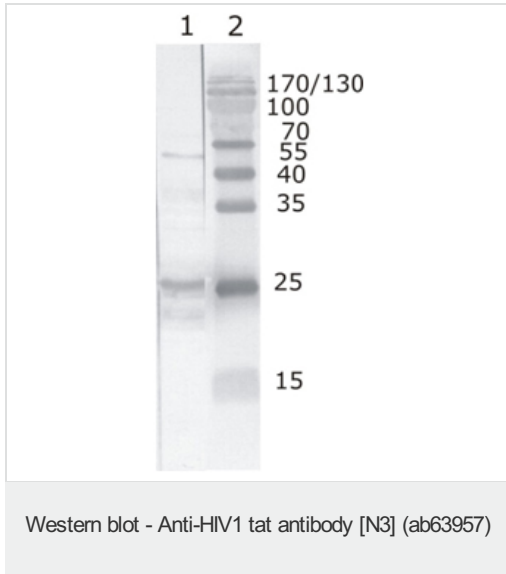
## Images



IHC-P image of HIV1 tat staining on Transgenic mouse olfactory bulb. Heat mediated antigen retrieval was performed using trisodium citrate (pH 6). The tissue section was permeabilization using Triton x100. To block non-specific binding, sections were blocked in 2% BSA in PBS.

Immunohistochemistry (Formalin/PFA-fixed paraffin-embedded sections) - Anti-HIV1 tat antibody [N3] (ab63957)

This image is courtesy of an abreview submitted by Ruma Raha-Chowdhury, University Of Cambridge, United Kingdom



Anti-HIV1 tat antibody [N3] (ab63957) + Recombinant HIV1 Tat

**Please note:** All products are "FOR RESEARCH USE ONLY. NOT FOR USE IN DIAGNOSTIC PROCEDURES"

### Our Abpromise to you: Quality guaranteed and expert technical support

---

- Replacement or refund for products not performing as stated on the datasheet
- Valid for 12 months from date of delivery
- Response to your inquiry within 24 hours
- We provide support in Chinese, English, French, German, Japanese and Spanish
- Extensive multi-media technical resources to help you
- We investigate all quality concerns to ensure our products perform to the highest standards

If the product does not perform as described on this datasheet, we will offer a refund or replacement. For full details of the Abpromise, please visit <https://www.abcam.com/abpromise> or contact our technical team.

### Terms and conditions

---

- Guarantee only valid for products bought direct from Abcam or one of our authorized distributors