

## Product datasheet

# Anti-HKDC1 antibody [EPR19835] ab209846

Recombinant RabMAb

5 Images

### Overview

<b>Product name</b>	Anti-HKDC1 antibody [EPR19835]
<b>Description</b>	Rabbit monoclonal [EPR19835] to HKDC1
<b>Host species</b>	Rabbit
<b>Tested applications</b>	<b>Suitable for:</b> WB, IP
<b>Species reactivity</b>	<b>Reacts with:</b> Human, Recombinant fragment
<b>Immunogen</b>	Recombinant fragment. This information is proprietary to Abcam and/or its suppliers.
<b>Positive control</b>	WB: HKDC1 recombinant protein (aa16-458); HeLa and A549 whole cell lysate; human fetal kidney lysate. IP: HeLa whole cell lysate.
<b>General notes</b>	<p>This product is a recombinant monoclonal antibody, which offers several advantages including:</p> <ul style="list-style-type: none"> <li>- High batch-to-batch consistency and reproducibility</li> <li>- Improved sensitivity and specificity</li> <li>- Long-term security of supply</li> <li>- Animal-free production</li> </ul> <p>For more information <a href="#">see here</a>.</p> <p>Our RabMAb<sup>®</sup> technology is a patented hybridoma-based technology for making rabbit monoclonal antibodies. For details on our patents, please refer to <a href="#">RabMAb<sup>®</sup> patents</a>.</p>

### Properties

<b>Form</b>	Liquid
<b>Storage instructions</b>	Shipped at 4°C. Store at +4°C short term (1-2 weeks). Upon delivery aliquot. Store at -20°C long term. Avoid freeze / thaw cycle.
<b>Storage buffer</b>	pH: 7.2 Preservative: 0.01% Sodium azide Constituents: PBS, 40% Glycerol (glycerin, glycerine), 0.05% BSA
<b>Purity</b>	Protein A purified
<b>Clonality</b>	Monoclonal
<b>Clone number</b>	EPR19835
<b>Isotype</b>	IgG

## Applications

### The Abpromise guarantee

Our [Abpromise guarantee](#) covers the use of ab209846 in the following tested applications.

The application notes include recommended starting dilutions; optimal dilutions/concentrations should be determined by the end user.

Application	Abreviews	Notes
WB		1/1000. Detects a band of approximately 102 kDa (predicted molecular weight: 103 kDa).
IP		1/30.

## Target

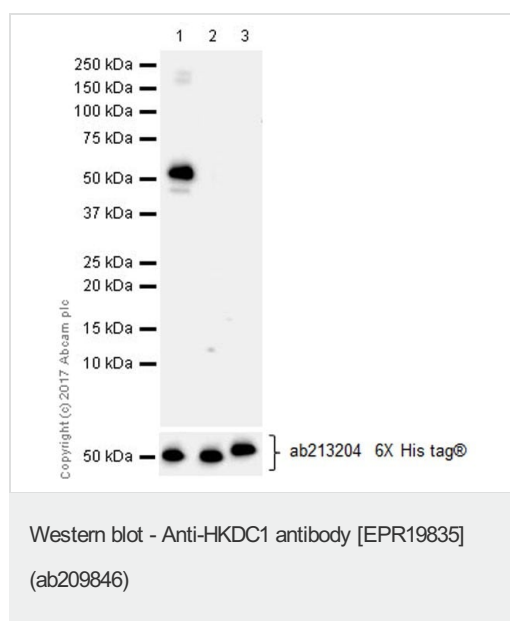
### Pathway

Carbohydrate metabolism; hexose metabolism.

### Sequence similarities

Belongs to the hexokinase family.

## Images



**All lanes :** Anti-HKDC1 antibody [EPR19835] (ab209846) at 1/1000 dilution

**Lane 1 :** HKDC1 recombinant protein (aa16-458) 10 ng

**Lane 2 :** Hexokinase II recombinant protein (aa16-458) 10 ng

**Lane 3 :** Hexokinase I recombinant protein (aa16-458) 10 ng

### Secondary

**All lanes :** Goat Anti-Rabbit IgG H&L (HRP) (ab97051) at 1/100000 dilution

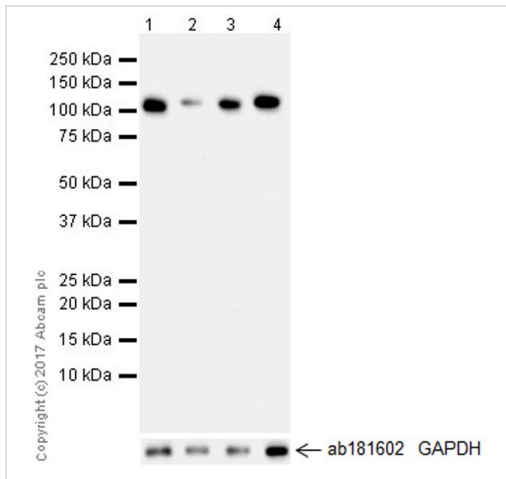
Developed using the ECL technique.

**Predicted band size:** 103 kDa

**Observed band size:** 50 kDa

**Exposure time:** 3 minutes

Blocking/dilution buffer and concentration: 5% NFDm/TBST.



Western blot - Anti-HKDC1 antibody [EPR19835] (ab209846)

**All lanes** : Anti-HKDC1 antibody [EPR19835] (ab209846) at 1/1000 dilution

**Lane 1** : HeLa (human cervix adenocarcinoma epithelial cell), whole cell lysate

**Lane 2** : HKDC1-knockdown HeLa cell lysate

**Lane 3** : Hexokinase I-knockdown HeLa cell lysate

**Lane 4** : Hexokinase II-knockdown HeLa cell lysate

Lysates/proteins at 10 µg per lane.

### Secondary

**All lanes** : Goat Anti-Rabbit IgG H&L (HRP) (ab97051) at 1/100000 dilution

Developed using the ECL technique.

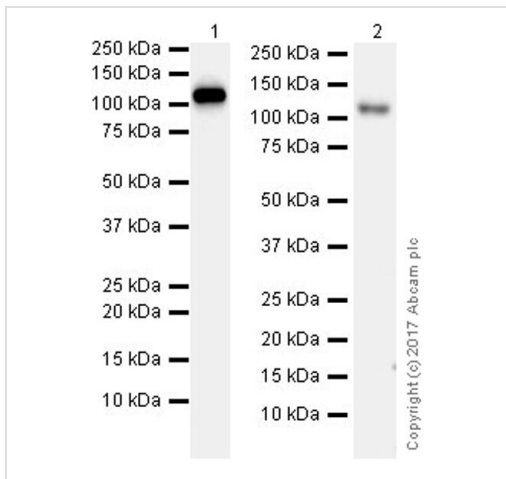
**Predicted band size:** 103 kDa

**Observed band size:** 102 kDa

**Exposure time:** 3 minutes

Blocking/dilution buffer and concentration: 5% NFDm/TBST.

The cell lysates were kindly provided by our collaborator Dr. Hui Jiang, NIBS



Western blot - Anti-HKDC1 antibody [EPR19835] (ab209846)

**All lanes :** Anti-HKDC1 antibody [EPR19835] (ab209846) at 1/1000 dilution

**Lane 1 :** A549 (human lung carcinoma epithelial cell), whole cell lysate

**Lane 2 :** Human fetal kidney lysate

Lysates/proteins at 10 µg per lane.

**Secondary**

**Lane 1 :** Goat Anti-Rabbit IgG H&L (HRP) (ab97051) at 1/100000 dilution

**Lane 2 :** VeriBlot for IP Detection Reagent (HRP) (ab131366) at 1/4000 dilution

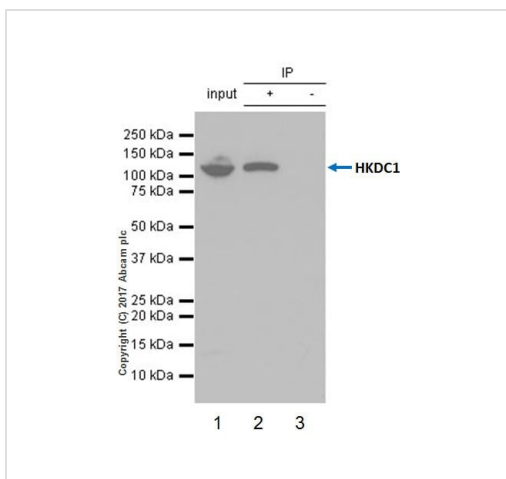
Developed using the ECL technique.

**Predicted band size:** 103 kDa

**Observed band size:** 102 kDa

**Exposure time:** 3 minutes

Blocking/dilution buffer and concentration: 5% NFDm/TBST.



Immunoprecipitation - Anti-HKDC1 antibody [EPR19835] (ab209846)

HKDC1 was immunoprecipitated from 0.35 mg HeLa (human cervix adenocarcinoma epithelial cell) whole cell lysate with ab209846 at 1/30 dilution. Western blot was performed from the immunoprecipitate using ab209846 at 1/500 dilution. VeriBlot for IP Detection Reagent (HRP) (ab131366), was used for detection at 1/1000 dilution.

**Lane 1:** HeLa (human cervix adenocarcinoma epithelial cell) whole cell lysate 10 µg (Input).

**Lane 2:** ab209846 IP in HeLa whole cell lysate (+).

**Lane 3:** Rabbit monoclonal IgG (ab172730) instead of ab209846 in HeLa whole cell lysate (-).

Blocking and dilution buffer and concentration: 5% NFDm/TBST.

Exposure time: 3 seconds.

### Why choose a recombinant antibody?



**Research with confidence**  
Consistent and reproducible results



**Long-term and scalable supply**  
Recombinant technology



**Success from the first experiment**  
Confirmed specificity



**Ethical standards compliant**  
Animal-free production

Anti-HKDC1 antibody [EPR19835] (ab209846)

**Please note:** All products are "FOR RESEARCH USE ONLY. NOT FOR USE IN DIAGNOSTIC PROCEDURES"

### Our Abpromise to you: Quality guaranteed and expert technical support

---

- Replacement or refund for products not performing as stated on the datasheet
- Valid for 12 months from date of delivery
- Response to your inquiry within 24 hours
- We provide support in Chinese, English, French, German, Japanese and Spanish
- Extensive multi-media technical resources to help you
- We investigate all quality concerns to ensure our products perform to the highest standards

If the product does not perform as described on this datasheet, we will offer a refund or replacement. For full details of the Abpromise, please visit <https://www.abcam.com/abpromise> or contact our technical team.

### Terms and conditions

---

- Guarantee only valid for products bought direct from Abcam or one of our authorized distributors