

Product datasheet

Anti-HLA A2 antibody [BB7.2] ab74674

6 References 2 Images

Overview

Product name	Anti-HLA A2 antibody [BB7.2]
Description	Mouse monoclonal [BB7.2] to HLA A2
Host species	Mouse
Specificity	This product has been purified from tissue culture supernatant.
Tested applications	Suitable for: IP, Flow Cyt Unsuitable for: WB
Species reactivity	Reacts with: Human
Immunogen	HLA-A2 solubilised by papain
Epitope	The C-terminus of alpha-2 helix and a turn on one of the underlying beta strands.
General notes	This product was changed from ascites to tissue culture supernatant on 24th January 2018. Please note that the dilutions may need to be adjusted accordingly. If you have any questions, please do not hesitate to contact our scientific support team.

Properties

Form	Liquid
Storage instructions	Shipped at 4°C. Upon delivery aliquot and store at -20°C. Avoid freeze / thaw cycles.
Storage buffer	pH: 7.40 Constituent: PBS
Purity	Protein A purified
Purification notes	This product has been purified from tissue culture supernatant. Purity >95% by SDS-PAGE.
Clonality	Monoclonal
Clone number	BB7.2
Isotype	IgG2b
Light chain type	kappa

Applications

Our [Abpromise guarantee](#) covers the use of **ab74674** in the following tested applications.

The application notes include recommended starting dilutions; optimal dilutions/concentrations should be determined by the end user.

Application	Abreviews	Notes
IP		Use at an assay dependent concentration.
Flow Cyt		Use 2µg for 10 ⁶ cells. ab170192 - Mouse monoclonal IgG2b, is suitable for use as an isotype control with this antibody.

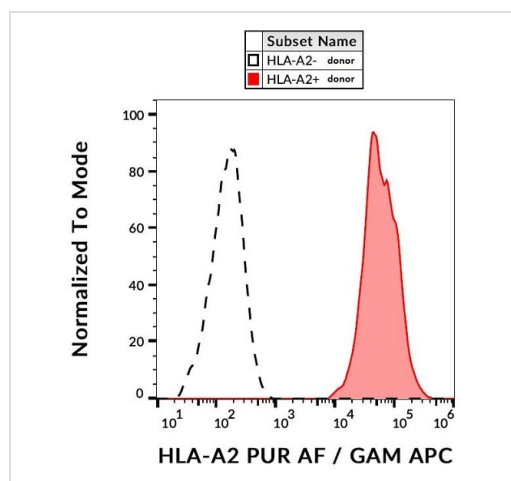
Application notes Is unsuitable for WB.

Target

Relevance Involved in the presentation of foreign antigens to the immune system. Dimer of alpha chain and a beta chain (beta-2-microglobulin). Interacts with human herpesvirus 8 MIR1 protein.

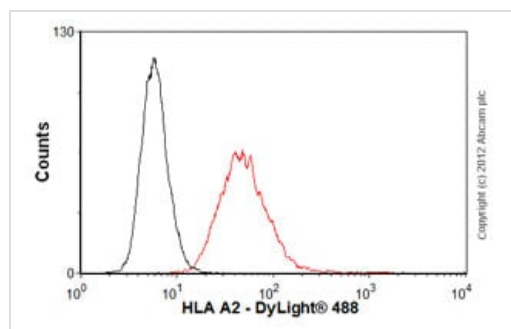
Cellular localization Membrane; Single-pass type I membrane protein.

Images



Flow Cytometry - Anti-HLA A2 antibody [BB7.2] (ab74674)

Flow cytometry of human peripheral blood cells with ab74674 at 2 µg/ml



Flow Cytometry - Anti-HLA A2 antibody [BB7.2] (ab74674)

Overlay histogram showing Raji cells stained with ab74674 (red line). The cells were fixed with 4% paraformaldehyde (10 min) and incubated in 1x PBS / 10% normal goat serum / 0.3M glycine to block non-specific protein-protein interactions. The cells were then incubated with the antibody (ab74674, 2µg/1x10⁶ cells) for 30 min at 22°C. The secondary antibody used was DyLight® 488 goat anti-mouse IgG (H+L) (ab96879) at 1/500 dilution for 30 min at 22°C. Isotype control antibody (black line) was mouse IgG2b [PLPV219] (ab91366, 2µg/1x10⁶ cells) used under the same conditions. Acquisition of >5,000 events was performed. This antibody gave a positive result in 80% methanol (5 min) fixed Raji cells used under

the same conditions.

Please note that Abcam do not have any data for use of this antibody on non-fixed cells. We welcome any customer feedback.

Please note: All products are "FOR RESEARCH USE ONLY. NOT FOR USE IN DIAGNOSTIC PROCEDURES"

Our Abpromise to you: Quality guaranteed and expert technical support

- Replacement or refund for products not performing as stated on the datasheet
- Valid for 12 months from date of delivery
- Response to your inquiry within 24 hours

- We provide support in Chinese, English, French, German, Japanese and Spanish
- Extensive multi-media technical resources to help you
- We investigate all quality concerns to ensure our products perform to the highest standards

If the product does not perform as described on this datasheet, we will offer a refund or replacement. For full details of the Abpromise, please visit <https://www.abcam.com/abpromise> or contact our technical team.

Terms and conditions

- Guarantee only valid for products bought direct from Abcam or one of our authorized distributors