

Product datasheet

Anti-HLA Class 1 ABC antibody [EMR8-5] ab70328

★★★★★ 12 Abreviews 84 References 4 Images

Overview

Product name	Anti-HLA Class 1 ABC antibody [EMR8-5]
Description	Mouse monoclonal [EMR8-5] to HLA Class 1 ABC
Host species	Mouse
Specificity	ab70328 reacts with the heavy chains of human HLA class 1 A, -B, and -C.
Tested applications	Suitable for: Flow Cyt, WB, IHC-P
Species reactivity	Reacts with: Human
Immunogen	Recombinant HLA-A*2402 extracellular domain
General notes	<p>Reproducibility is key to advancing scientific discovery and accelerating scientists' next breakthrough.</p> <p>Abcam is leading the way with our range of recombinant antibodies, knockout-validated antibodies and knockout cell lines, all of which support improved reproducibility.</p> <p>We are also planning to innovate the way in which we present recommended applications and species on our product datasheets, so that only applications & species that have been tested in our own labs, our suppliers or by selected trusted collaborators are covered by our Abpromise™ guarantee.</p> <p>In preparation for this, we have started to update the applications & species that this product is Abpromise guaranteed for.</p> <p>We are also updating the applications & species that this product has been “predicted to work with,” however this information is not covered by our Abpromise guarantee.</p> <p>Applications & species from publications and Abreviews that have not been tested in our own labs or in those of our suppliers are not covered by the Abpromise guarantee.</p> <p>Please check that this product meets your needs before purchasing. If you have any questions, special requirements or concerns, please send us an inquiry and/or contact our Support team ahead of purchase. Recommended alternatives for this product can be found below, as well as customer reviews and Q&As.</p>

Properties

Form	Liquid
Storage instructions	Shipped at 4°C. Store at +4°C short term (1-2 weeks). Upon delivery aliquot. Store at -20°C long

	term.
Storage buffer	pH: 7.40 Preservative: 0.05% Sodium azide Constituent: PBS
Purity	Protein A purified
Clonality	Monoclonal
Clone number	EMR8-5
Myeloma	NS1
Isotype	IgG1
Light chain type	kappa

Applications

Our [Abpromise guarantee](#) covers the use of **ab70328** in the following tested applications.

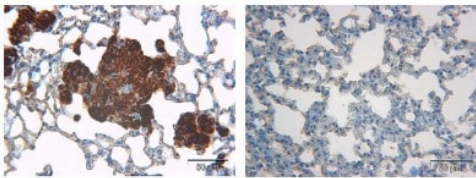
The application notes include recommended starting dilutions; optimal dilutions/concentrations should be determined by the end user.

Application	Abreviews	Notes
Flow Cyt	★ ★ ★ ★ ★	Use 1-2µg for 10 ⁶ cells. (methanol or paraformaldehyde fixed cells) ab170190 - Mouse monoclonal IgG1, is suitable for use as an isotype control with this antibody.
WB	★ ★ ★ ★ ★	Use at an assay dependent concentration.
IHC-P	★ ★ ★ ★ ★	1/50 - 1/100.

Target

Relevance	HLA-ABC antigen is present on most nucleated cells of humans and Old World monkeys. HLA Class I is involved in the presentation of foreign antigens to the immune system.
Cellular localization	Cell Membrane; Single-pass type I membrane protein

Images



mouse lung with
MDA-MB231 cells

mouse lung without
human cells

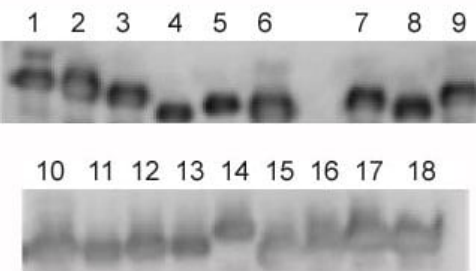
2012 Abcam

Immunohistochemistry (Formalin/PFA-fixed paraffin-embedded sections) - Anti-HLA Class 1 ABC antibody [EMR8-5] (ab70328)

This image is courtesy of an anonymous Abreview

Immunohistochemical analysis of murine lung with Human MDA-MB231 breast cancer cells, staining HLA Class 1 ABC with ab70328.

Tissue was fixed with formaldehyde and blocked with blocking agent for 4 minutes at 36°C; antigen retrieval was by heat mediation. Samples were incubated with primary antibody (1/100 in diluent) for 24 minutes at 36°C. An undiluted HRP-conjugated goat anti-mouse polyclonal IgG was used as the secondary antibody.



Western blot - Anti-HLA Class 1 ABC antibody [EMR8-5] (ab70328)

All lanes : Anti-HLA Class 1 ABC antibody [EMR8-5] (ab70328)

Lane 1 : A*2402

Lane 2 : A*0101

Lane 3 : A*1101

Lane 4 : A*0201

Lane 5 : A*0207

Lane 6 : A2402

Lane 7 : B*0702

Lane 8 : B*0801

Lane 9 : B*1501

Lane 10 : B*3501

Lane 11 : B*4001

Lane 12 : B*4002

Lane 13 : B*4006

Lane 14 : B*4403

Lane 15 : Cw*0102

Lane 16 : Cw*0801

Lane 17 : Cw*1202

Lane 18 : Cw*1502

Western blot analysis of ab70328 reactivity using recominant HLA heavy chains.

Lanes 1-6: HLA-A

Lanes 7-14: HLA-B

Lanes 15-18: HLA-C



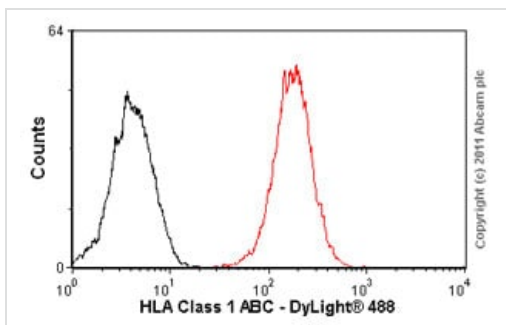
All lanes : Anti-HLA Class 1 ABC antibody [EMR8-5] (ab70328)

Lane 1 : Human oral cancer cell line OSC20

Lane 2 : HLA-A2402 gene transfected OSC20

Lane 3 : Human Leukemia cell line K562

Lane 4 : Recombinant HLA-A2402 heavy chain



Overlay histogram showing Jurkat cells stained with ab70328 (red line). The cells were fixed with methanol (5 min) and incubated in 1x PBS / 10% normal goat serum / 0.3M glycine to block non-specific protein-protein interactions. The cells were then incubated with the antibody (ab70328, 1µg/1x10⁶ cells) for 30 min at 22°C. The secondary antibody used was DyLight® 488 goat anti-mouse IgG (H+L) (ab96879) at 1/500 dilution for 30 min at 22°C. Isotype control antibody (black line) was mouse IgG1 [ICIGG1] (ab91353, 2µg/1x10⁶ cells) used under the same conditions. Acquisition of >5,000 events was performed. This antibody gave a positive signal in Jurkat cells fixed with 4% paraformaldehyde (10 min) used under the same conditions.

Please note that Abcam do not have data for use of this antibody on non-fixed cells. We welcome any customer feedback.

Please note: All products are "FOR RESEARCH USE ONLY. NOT FOR USE IN DIAGNOSTIC PROCEDURES"

Our Abpromise to you: Quality guaranteed and expert technical support

- Replacement or refund for products not performing as stated on the datasheet
- Valid for 12 months from date of delivery
- Response to your inquiry within 24 hours
- We provide support in Chinese, English, French, German, Japanese and Spanish
- Extensive multi-media technical resources to help you
- We investigate all quality concerns to ensure our products perform to the highest standards

If the product does not perform as described on this datasheet, we will offer a refund or replacement. For full details of the Abpromise, please visit <https://www.abcam.com/abpromise> or contact our technical team.

Terms and conditions

- Guarantee only valid for products bought direct from Abcam or one of our authorized distributors