

Product datasheet

Anti-HLA Class I antibody [MEM-147] ab9090

1 References 2 Images

Overview

Product name	Anti-HLA Class I antibody [MEM-147]
Description	Mouse monoclonal [MEM-147] to HLA Class I
Host species	Mouse
Specificity	Reacts with all human classical MHC Class I molecules in native cell-surface forms. Positive in immunoblotting with many (not all) MHC Class I allelic forms (e.g. it recognizes native HLA-A2 in cytofluorometry and immunoprecipitation but not in Western blotting). Positive in Western blotting (non-reducing conditions) with most HLA-B and HLA-C molecules, but not HLA-A. Epitope specificity is very similar to classical antibody W6/32 (ab7855).
Tested applications	Suitable for: Flow Cyt, WB
Species reactivity	Reacts with: Human
Immunogen	Tissue, cells or virus corresponding to HLA Class I. PHA-activated peripheral blood lymphocytes
General notes	<p>The Life Science industry has been in the grips of a reproducibility crisis for a number of years. Abcam is leading the way in addressing this with our range of recombinant monoclonal antibodies and knockout edited cell lines for gold-standard validation. Please check that this product meets your needs before purchasing.</p> <p>If you have any questions, special requirements or concerns, please send us an inquiry and/or contact our Support team ahead of purchase. Recommended alternatives for this product can be found below, along with publications, customer reviews and Q&As</p>

Properties

Form	Liquid
Storage instructions	Shipped at 4°C. Store at +4°C short term (1-2 weeks). Upon delivery aliquot. Store at -20°C or -80°C. Avoid freeze / thaw cycle.
Storage buffer	pH: 7.40 Preservative: 0.097% Sodium azide Constituent: PBS
Purity	Protein A purified
Purification notes	Purified from TCS. Purity >95% by SDS-PAGE.
Clonality	Monoclonal
Clone number	MEM-147

Isotype

IgG1

Applications

The Abpromise guarantee

Our [Abpromise guarantee](#) covers the use of ab9090 in the following tested applications.

The application notes include recommended starting dilutions; optimal dilutions/concentrations should be determined by the end user.

Application	Abreviews	Notes
Flow Cyt		Use 1µg for 10 ⁶ cells. ab170190 - Mouse monoclonal IgG1, is suitable for use as an isotype control with this antibody.
WB		1/100. Use non-reducing conditions.

Target

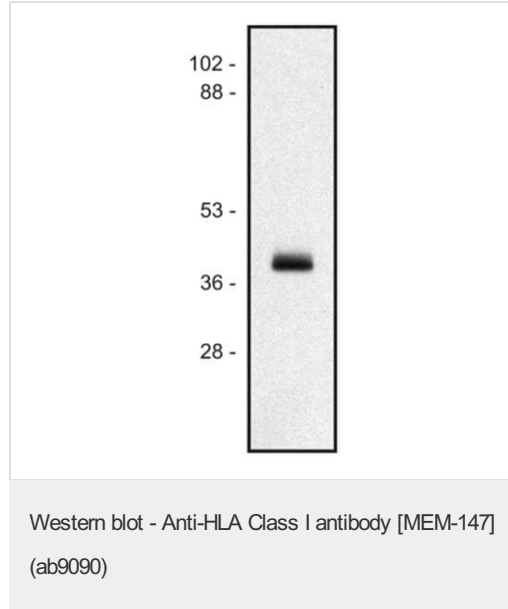
Relevance

HLA Class I is involved in the presentation of foreign antigens to the immune system.

Cellular localization

Plasma membrane

Images

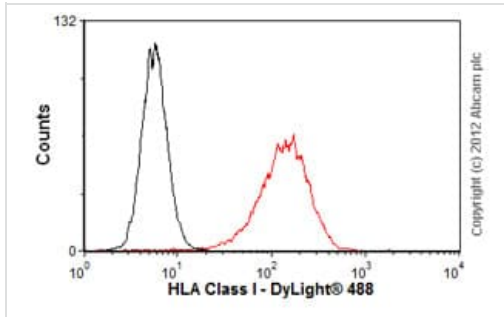


Anti-HLA Class I antibody [MEM-147] (ab9090) at 1/100 dilution + Human Ramos B cell line lysates (1% laurylmaltoside)

Secondary

Goat anti-mouse IgG (H+L)-HRP conjugate

Performed under non-reducing conditions.



Flow Cytometry - Anti-HLA Class I antibody [MEM-147] (ab9090)

Overlay histogram showing Jurkat cells stained with ab9090 (red line). The cells were fixed with 4% paraformaldehyde (10 min) and incubated in 1x PBS / 10% normal goat serum / 0.3M glycine to block non-specific protein-protein interactions. The cells were then incubated with the antibody (ab9090, 1µg/1x10⁶ cells) for 30 min at 22°C. The secondary antibody used was DyLight® 488 goat anti-mouse IgG (H+L) (ab96879) at 1/500 dilution for 30 min at 22°C. Isotype control antibody (black line) was mouse IgG1 [ICIGG1] (ab91353, 2µg/1x10⁶ cells) used under the same conditions.

Acquisition of >5,000 events was performed. This antibody gave a positive result in 80% methanol (5 min) fixed Jurkat cells used under the same conditions.

Please note that Abcam do not have any data for use of this antibody on non-fixed cells. We welcome any customer feedback.

Please note: All products are "FOR RESEARCH USE ONLY. NOT FOR USE IN DIAGNOSTIC PROCEDURES"

Our Abpromise to you: Quality guaranteed and expert technical support

- Replacement or refund for products not performing as stated on the datasheet
- Valid for 12 months from date of delivery
- Response to your inquiry within 24 hours
- We provide support in Chinese, English, French, German, Japanese and Spanish
- Extensive multi-media technical resources to help you
- We investigate all quality concerns to ensure our products perform to the highest standards

If the product does not perform as described on this datasheet, we will offer a refund or replacement. For full details of the Abpromise, please visit <https://www.abcam.com/abpromise> or contact our technical team.

Terms and conditions

- Guarantee only valid for products bought direct from Abcam or one of our authorized distributors