

## Product datasheet

# Anti-HLA Class I antibody [YTH862.2] ab33252

★★★★★ 3 Abreviews 1 Image

### Overview

---

<b>Product name</b>	Anti-HLA Class I antibody [YTH862.2]
<b>Description</b>	Rat monoclonal [YTH862.2] to HLA Class I
<b>Host species</b>	Rat
<b>Specificity</b>	ab33252 recognises a monomorphic determinant on the human HLA Class I heavy chain. We have data to indicate that this antibody may not cross react with Mouse. However, this has not been conclusively tested and expression levels may vary in certain cell lines/tissues.
<b>Tested applications</b>	<b>Suitable for:</b> Functional Studies, Flow Cyt, IHC-Fr, IP
<b>Species reactivity</b>	<b>Reacts with:</b> Human
<b>Immunogen</b>	Tissue/ cell preparation: PHA activated human peripheral blood lymphocytes.
<b>Epitope</b>	ab33252 reacts with an epitope located in the alpha1 domain of HLA class I molecules.
<b>Positive control</b>	Human peripheral blood lymphocytes
<b>General notes</b>	Fusion Partners: Spleen cells from immunised DA rats were fused with cells of the rat Y3 myeloma cell line.

### Properties

---

<b>Form</b>	Liquid
<b>Storage instructions</b>	Shipped at 4°C. Store at +4°C short term (1-2 weeks). Upon delivery aliquot. Store at -20°C or -80°C. Avoid freeze / thaw cycle.
<b>Storage buffer</b>	pH: 7.40 Preservative: 0.09% Sodium azide Constituent: PBS
<b>Purity</b>	Protein G purified
<b>Purification notes</b>	ab33252 was purified from tissue culture supernatant.
<b>Clonality</b>	Monoclonal
<b>Clone number</b>	YTH862.2
<b>Isotype</b>	IgG2b

### Applications

---

Our [Abpromise guarantee](#) covers the use of **ab33252** in the following tested applications.

The application notes include recommended starting dilutions; optimal dilutions/concentrations should be determined by the end user.

Application	Abreviews	Notes
-------------	-----------	-------

Functional Studies		Use at an assay dependent concentration. This product contains sodium azide, removal by dialysis is recommended prior to use in functional assays.
--------------------	--	--

Flow Cyt		1/50 - 1/100. Use 10µl of the suggested working dilution to label 10 <sup>6</sup> cells in 100µl.
----------	--	--

[ab18536](#) - Rat monoclonal IgG2b, is suitable for use as an isotype control with this antibody.

IHC-Fr	★★★★☆	Use at an assay dependent concentration.
--------	-------	--

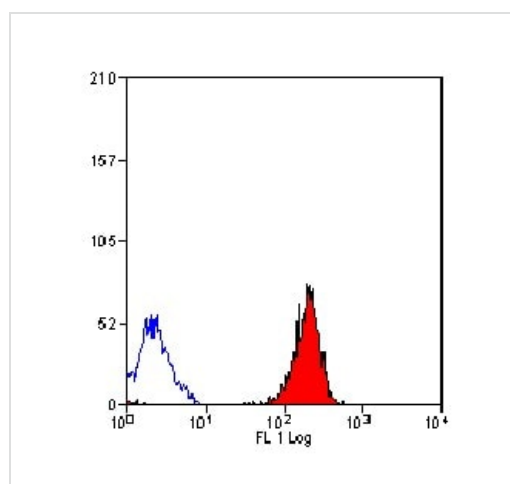
IP		Use at an assay dependent concentration.
----	--	--

## Target

**Relevance** HLA Class I is involved in the presentation of foreign antigens to the immune system.

**Cellular localization** Plasma membrane

## Images



FACS analysis of HLA class I expressing cells in human peripheral blood lymphocytes using ab33252.

Flow Cytometry - Anti-HLA Class I antibody  
[YTH862.2] (ab33252)

**Please note:** All products are "FOR RESEARCH USE ONLY. NOT FOR USE IN DIAGNOSTIC PROCEDURES"

## **Our Abpromise to you: Quality guaranteed and expert technical support**

---

- Replacement or refund for products not performing as stated on the datasheet
- Valid for 12 months from date of delivery
- Response to your inquiry within 24 hours
  
- We provide support in Chinese, English, French, German, Japanese and Spanish
- Extensive multi-media technical resources to help you
- We investigate all quality concerns to ensure our products perform to the highest standards

If the product does not perform as described on this datasheet, we will offer a refund or replacement. For full details of the Abpromise, please visit <https://www.abcam.com/abpromise> or contact our technical team.

## **Terms and conditions**

---

- Guarantee only valid for products bought direct from Abcam or one of our authorized distributors