

Product datasheet

Anti-HLX1 antibody ab210808

2 Images

Overview

Product name	Anti-HLX1 antibody
Description	Rabbit polyclonal to HLX1
Host species	Rabbit
Tested applications	Suitable for: WB, ICC/IF, IHC-P
Species reactivity	Reacts with: Mouse, Rat, Human
Immunogen	Recombinant full length protein corresponding to Human HLX1 aa 80-280 (internal sequence). Database link: Q14774
Positive control	HL60, Raji, THP-1 and 293T cell extracts; A549 cells.

Properties

Form	Liquid
Storage instructions	Shipped at 4°C. Store at +4°C short term (1-2 weeks). Upon delivery aliquot. Store at -20°C long term. Avoid freeze / thaw cycle.
Storage buffer	pH: 7.30 Preservative: 0.02% Sodium azide Constituents: 49% PBS, 50% Glycerol
Purity	Immunogen affinity purified
Clonality	Polyclonal
Isotype	IgG

Applications

Our [Abpromise guarantee](#) covers the use of **ab210808** in the following tested applications.

The application notes include recommended starting dilutions; optimal dilutions/concentrations should be determined by the end user.

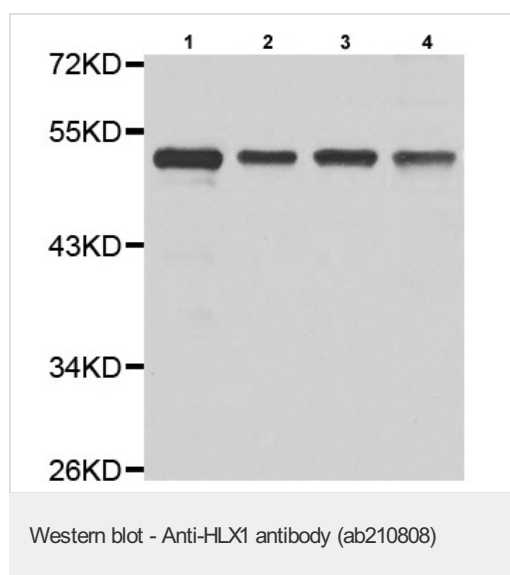
Application	Abreviews	Notes
WB		1/500 - 1/2000. Predicted molecular weight: 51 kDa.
ICC/IF		1/50 - 1/200.

Application	Abreviews	Notes
IHC-P		1/50 - 1/200.

Target

Function	Transcription factor required for TBX21/T-bet-dependent maturation of Th1 cells as well as maintenance of Th1-specific gene expression. Involved in embryogenesis and hematopoiesis.
Tissue specificity	Low level in normal B and T-cells, high level in activated lymphocytes and monocytes. Also found in thymus, tonsil, bone marrow, developing vessels, and fetal brain.
Sequence similarities	Belongs to the H2.0 homeobox family. Contains 1 homeobox DNA-binding domain.
Cellular localization	Nucleus.

Images



All lanes : Anti-HLX1 antibody (ab210808) at 1/500 dilution

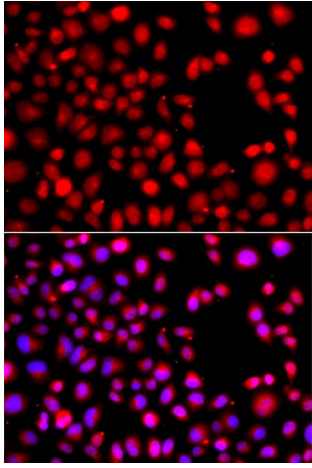
Lane 1 : HL60 cell extract

Lane 2 : Raji cell extract

Lane 3 : THP-1 cell extract

Lane 4 : 293T cell extract

Predicted band size: 51 kDa



Immunofluorescent analysis of A549 cells labeling HLX1 with ab210808 at 1/50 dilution. Blue: DAPI for nuclear staining

Immunocytochemistry/ Immunofluorescence - Anti-HLX1 antibody (ab210808)

Please note: All products are "FOR RESEARCH USE ONLY. NOT FOR USE IN DIAGNOSTIC PROCEDURES"

Our Abpromise to you: Quality guaranteed and expert technical support

- Replacement or refund for products not performing as stated on the datasheet
- Valid for 12 months from date of delivery
- Response to your inquiry within 24 hours
- We provide support in Chinese, English, French, German, Japanese and Spanish
- Extensive multi-media technical resources to help you
- We investigate all quality concerns to ensure our products perform to the highest standards

If the product does not perform as described on this datasheet, we will offer a refund or replacement. For full details of the Abpromise, please visit <https://www.abcam.com/abpromise> or contact our technical team.

Terms and conditions

- Guarantee only valid for products bought direct from Abcam or one of our authorized distributors