

Product datasheet

Anti-HN1L/L11 antibody ab200587

1 References 2 Images

Overview

Product name	Anti-HN1L/L11 antibody
Description	Rabbit polyclonal to HN1L/L11
Host species	Rabbit
Tested applications	Suitable for: WB, IP
Species reactivity	Reacts with: Human Predicted to work with: Rat, Sheep, Rabbit, Horse, Cow, Pig, Chimpanzee, Rhesus monkey, Gorilla, Orangutan
Immunogen	Synthetic peptide within Human HN1L/L11 aa 140-190. The exact sequence is proprietary. (NP_653171.1). Sequence: GEKGSARKAGPAKEQEPMPPTVDSHEPRLGPRPRSHNKV LNPPGGKSSISF Y Database link: Q9H910 Run BLAST with Run BLAST with
Positive control	HeLa, 293T and Jurkat whole cell lysate (ab7899).
General notes	This product was previously labelled as HN1L

Reproducibility is key to advancing scientific discovery and accelerating scientists' next breakthrough.

Abcam is leading the way with our range of recombinant antibodies, knockout-validated antibodies and knockout cell lines, all of which support improved reproducibility.

We are also planning to innovate the way in which we present recommended applications and species on our product datasheets, so that only applications & species that have been tested in our own labs, our suppliers or by selected trusted collaborators are covered by our Abpromise™ guarantee.

In preparation for this, we have started to update the applications & species that this product is Abpromise guaranteed for.

We are also updating the applications & species that this product has been “predicted to work with,” however this information is not covered by our Abpromise guarantee.

Applications & species from publications and Abreviews that have not been tested in our own labs or in those of our suppliers are not covered by the Abpromise guarantee.

Please check that this product meets your needs before purchasing. If you have any questions, special requirements or concerns, please send us an inquiry and/or contact our Support team ahead of purchase. Recommended alternatives for this product can be found below, as well as customer reviews and Q&As.

Properties

Form	Liquid
Storage instructions	Shipped at 4°C. Store at +4°C short term (1-2 weeks). Upon delivery aliquot. Store at -20°C long term. Avoid freeze / thaw cycle.
Storage buffer	pH: 7 Preservative: 0.09% Sodium azide Constituent: 99% Tris citrate/phosphate
Purity	pH 7 to 8 Immunogen affinity purified
Purification notes	ab200587 was affinity purified using an epitope specific to HN1L/L11 immobilized on solid support.
Clonality	Polyclonal
Isotype	IgG

Applications

Our [Abpromise guarantee](#) covers the use of **ab200587** in the following tested applications.

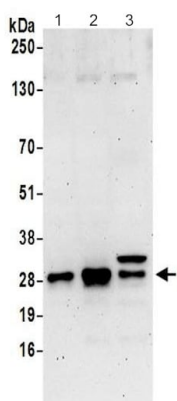
The application notes include recommended starting dilutions; optimal dilutions/concentrations should be determined by the end user.

Application	Abreviews	Notes
WB		1/2000 - 1/10000. Predicted molecular weight: 20 kDa.
IP		Use at 2-10 µg/mg of lysate.

Target

Tissue specificity	Expressed in liver, kidney, prostate, testis and uterus.
Sequence similarities	Belongs to the HN1 family.
Cellular localization	Cytoplasm. Nucleus.

Images



Western blot - Anti-HN1L/L11 antibody (ab200587)

All lanes : Anti-HN1L/L11 antibody (ab200587) at 0.1 µg/ml

Lane 1 : HeLa whole cell lysate

Lane 2 : 293T whole cell lysate

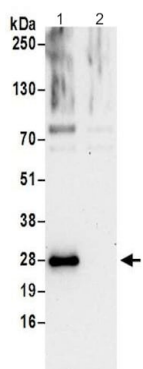
Lane 3 : Jurkat whole cell lysate

Lysates/proteins at 50 µg per lane.

Developed using the ECL technique.

Predicted band size: 20 kDa

Exposure time: 3 minutes



Immunoprecipitation - Anti-HN1L/L11 antibody (ab200587)

Detection of HN1L/L11 in immunoprecipitates of 293T whole cell lysate (prepared using NETN lysis buffer; 1 mg for IP, 20% of IP loaded) using ab200587 at 6 µg/mg lysate for IP and at 0.4 µg/ml for subsequent Western blot detection (Lane 1). Lane 2 represents control IgG IP.

Detection: Chemiluminescence with an exposure time of 30 seconds.

Please note: All products are "FOR RESEARCH USE ONLY. NOT FOR USE IN DIAGNOSTIC PROCEDURES"

Our Abpromise to you: Quality guaranteed and expert technical support

- Replacement or refund for products not performing as stated on the datasheet
- Valid for 12 months from date of delivery
- Response to your inquiry within 24 hours
- We provide support in Chinese, English, French, German, Japanese and Spanish
- Extensive multi-media technical resources to help you
- We investigate all quality concerns to ensure our products perform to the highest standards

If the product does not perform as described on this datasheet, we will offer a refund or replacement. For full details of the Abpromise, please visit <https://www.abcam.com/abpromise> or contact our technical team.

Terms and conditions

- Guarantee only valid for products bought direct from Abcam or one of our authorized distributors